



# TrailMaster

## Blazer4 150

---

Set up instruction

**Version: 1.0**

**2018/04/04**



This set up instruction is prepared for mechanic or experienced customer only! This instruction will introduce the set up of Blazer4 150X step by step to ensure a correct assembly, however all information in this instruction is for reference only! Before assembly, please make sure you have proper tools and knowledge to do it!

1. Check the components after opening the box (pic.1).



Pic.1

## 2. Assembly

2.1 Assemble the rear shocks (pic.2): take down the bolts from the shocks; lift the rear swing arm to let the top of shock into the mounting of frame, use 37-44NM torque to fix the shocks attached the frame.

(Note: 1NM = 0.74 lb ft)



Pic.2

2.2 Assemble the front lower suspension arm (pic.3): lift the frame over the ground, take down the bolts and washers on the strut, attach the lower suspension arm to the strut, put on the washer and castle nut in order, screw the nut with 55-62NM torque, fix the cotter pin 2.5X25 through the castle nut.



Pic.3

2.3 Assemble the front fender (pic.4): assemble the front fenders.



Pic. 4

2.4 Assemble the rear fender (pic.5): assemble the rear fenders.



Pic.5

2.5 Assemble the rear wheels (pic.6): screw the castle nut M16x1.5 tightly with 98-103NM, put on the cotter pin 3X40, lift the frame to install the wheel (please pay attention to the right direction of wheel installation as shown in the pic. 8), screw the tire nuts tightly with torque 37-44NM, cover the hub cover.



Pic.6

2.6 Assemble the front wheel (pic.7): Take down the tire bolts on the hub, set up the front wheel on the right position of hub, fix the tire bolts with 37-44NM torque, put on the hub cover.



Pic.7

2.7 Assemble the fuel tank (pic.8) and connect fuel line.



Pic.8

2.8 Assemble the roll cage bars (pic.9 and Pic15): install the center cross bar—install the front part of roll cage--- install the rear part of the roll cage--- install the rear seats shoulder bars --- install the top cage --- install the upper cross bar (shorter) --- install the rear lower cross bar (longer).



Pic.9



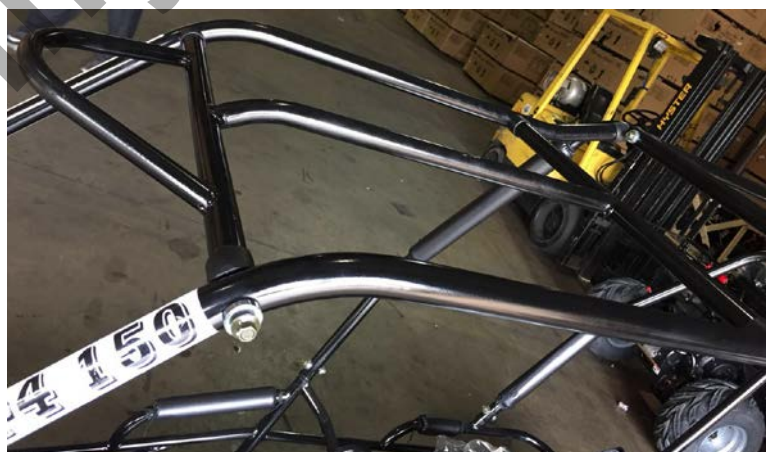
Pic.10



Pic.11



Pic.12

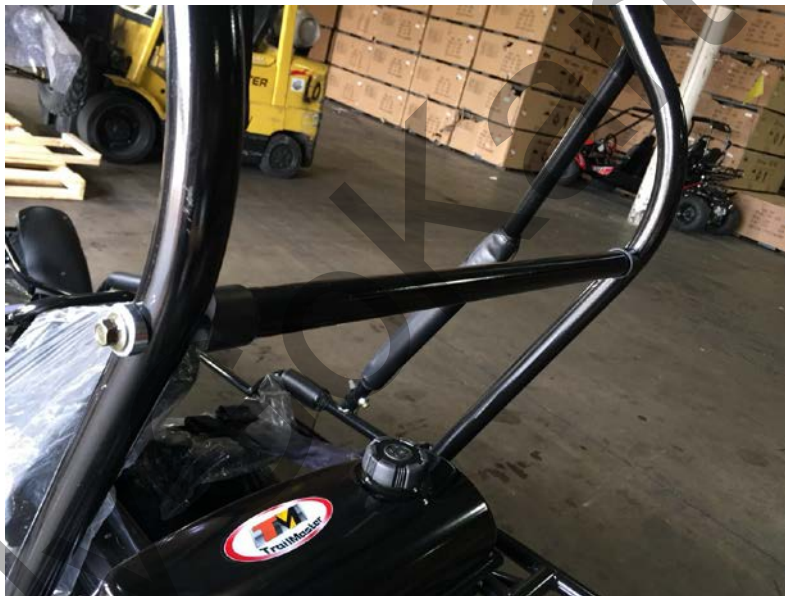


Pic.13





Pic.14



Pic. 15

2.9 Assemble the seats back (pic.16): Insert the seat back into the mount holes of seats frame.



Pic.16

2.10 Assemble the steering wheel (pic.17):



Pic.17

2.11 Assemble canopy top (pic.18): Put on the canopy top and foam padding.



Pic.18

2.12 Install the battery, battery cover: put the battery liquid into the battery body, close the battery cover. Put the cushion plate into the battery mount box. Connect the battery wires to the battery poles “+ to +; - to -”, cover them. Put the wired battery into the battery mount box covered with the plastic protection cover, put the wires out through the protection cover slot, fasten the battery with battery strap. (Note: because the battery liquid and wiring of battery poles are dangerous, only experienced adult can carry out this carefully with protection measures (protective glove, Prevent electric screwdriver).

Before driving please read the user manual of TrailMaster Go-kart Blazer4 150 carefully, you will be given with important safety information and advices.

Thanks a lot for choosing TrailMaster Go-kart Blazer4 150, For more other products of TrailMaster, please visit [www.bvpowersports.com](http://www.bvpowersports.com) !

BV Powersports, LLC