

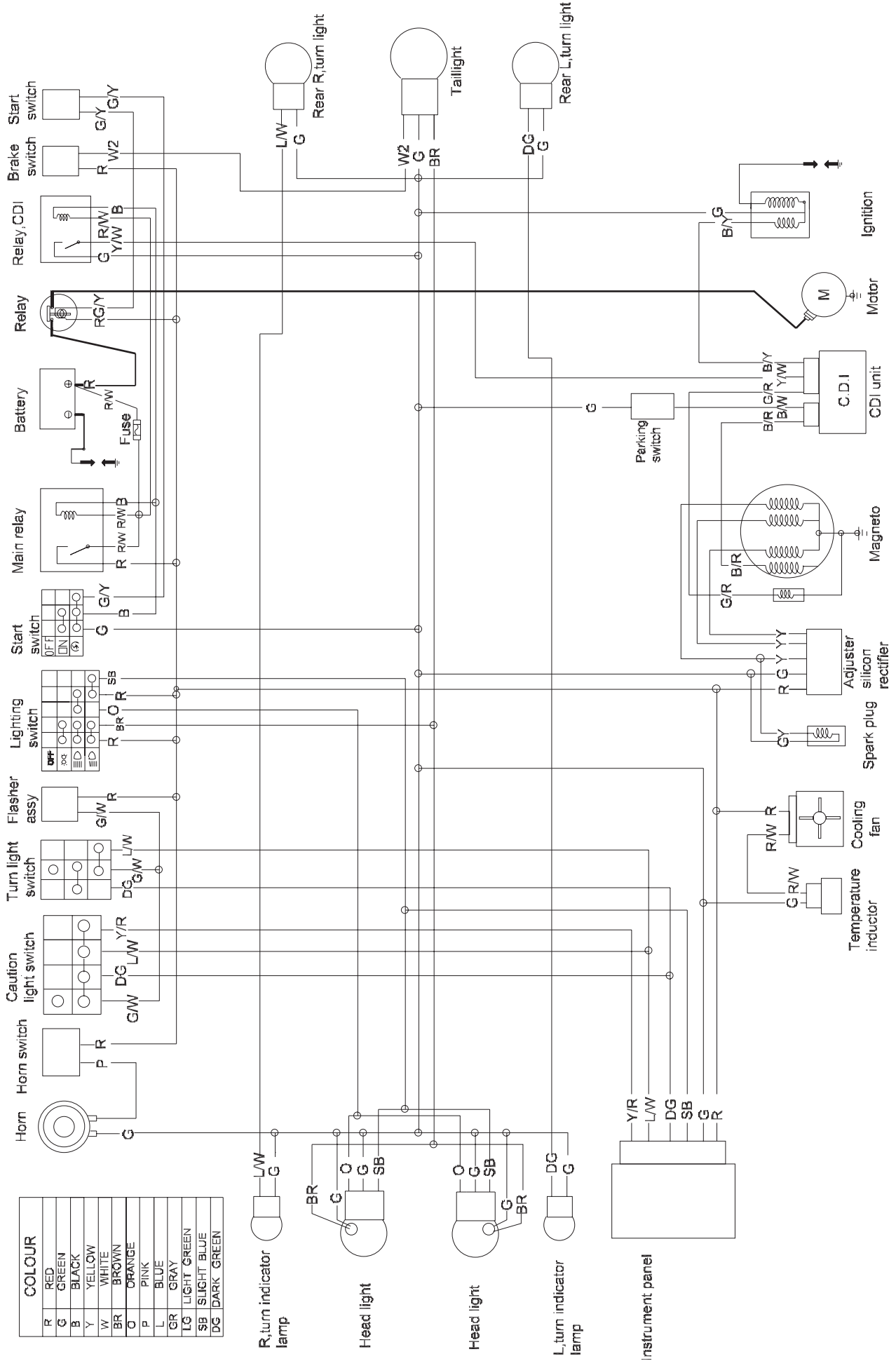
- XF250-2A
- XF250-2AR

---

# Parts Catalogue

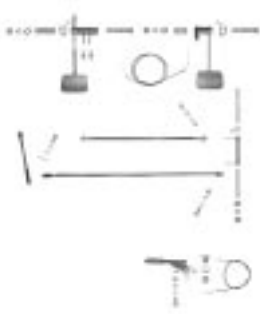


# WIRING DIAGRAM



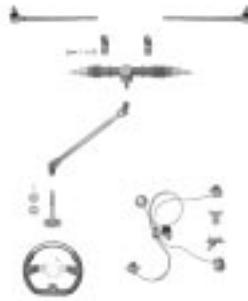
**FIG. 1**

CONTROLS



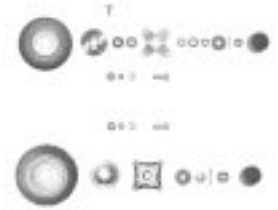
**FIG. 2**

STEERING SHAFT ASSY



**FIG. 3**

FRONT WHEEL&REAR WHEEL



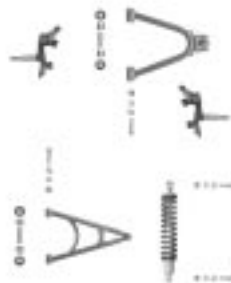
**FIG. 4**

FRAME ASSY



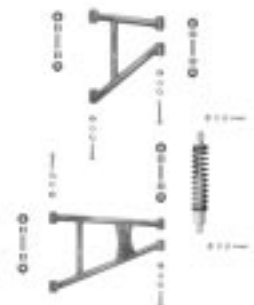
**FIG. 5**

FRONT SUSPENSION  
ARM ASSY.



**FIG. 6**

REAR SUSPENSION ARM ASSY.



**FIG. 7**

REAR DRIVE AXLE ASSY



**FIG. 8**

COOLANT ASSY



**FIG. 9**

ELECTRICAL ASSY



**FIG. 10**

CYLINDER HEAD ASSY(1)



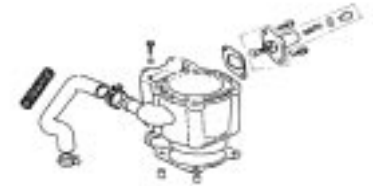
**FIG. 11**

CYLINDER HEAD ASSY(2)



**FIG. 12**

CYLINDER BODY ASSY



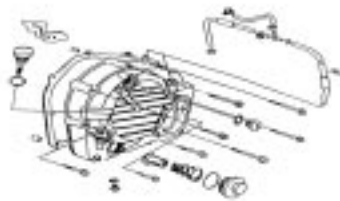
**FIG. 13**

CRANKCASE ASSY(1)



**FIG. 14**

CRANKCASE ASSY(2)



**FIG. 15**

CRANK SHAFT PISTON  
CONNECTING ROD, VALVE  
TRAIN ASSY



**FIG. 16**

LEFT COVER, WATER  
COOLING ASSY



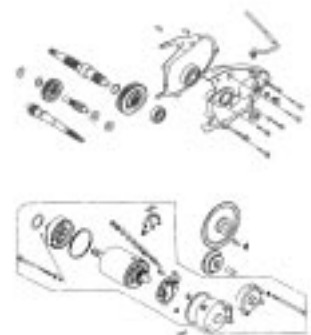
**FIG. 17**

OIL PUMP, CLUTCH ASSY



**FIG. 18**

SLOWDOWN GEAR, ELECTRICAL  
STARTER ASSY



**FIG. 19**

DRIVE PLATE ASSY



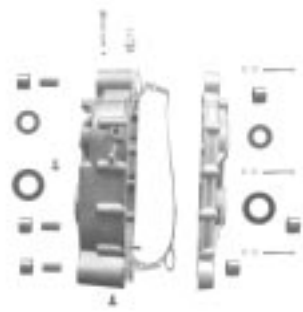
**FIG. 20**

REVERSE ASSY(1)



**FIG. 21**

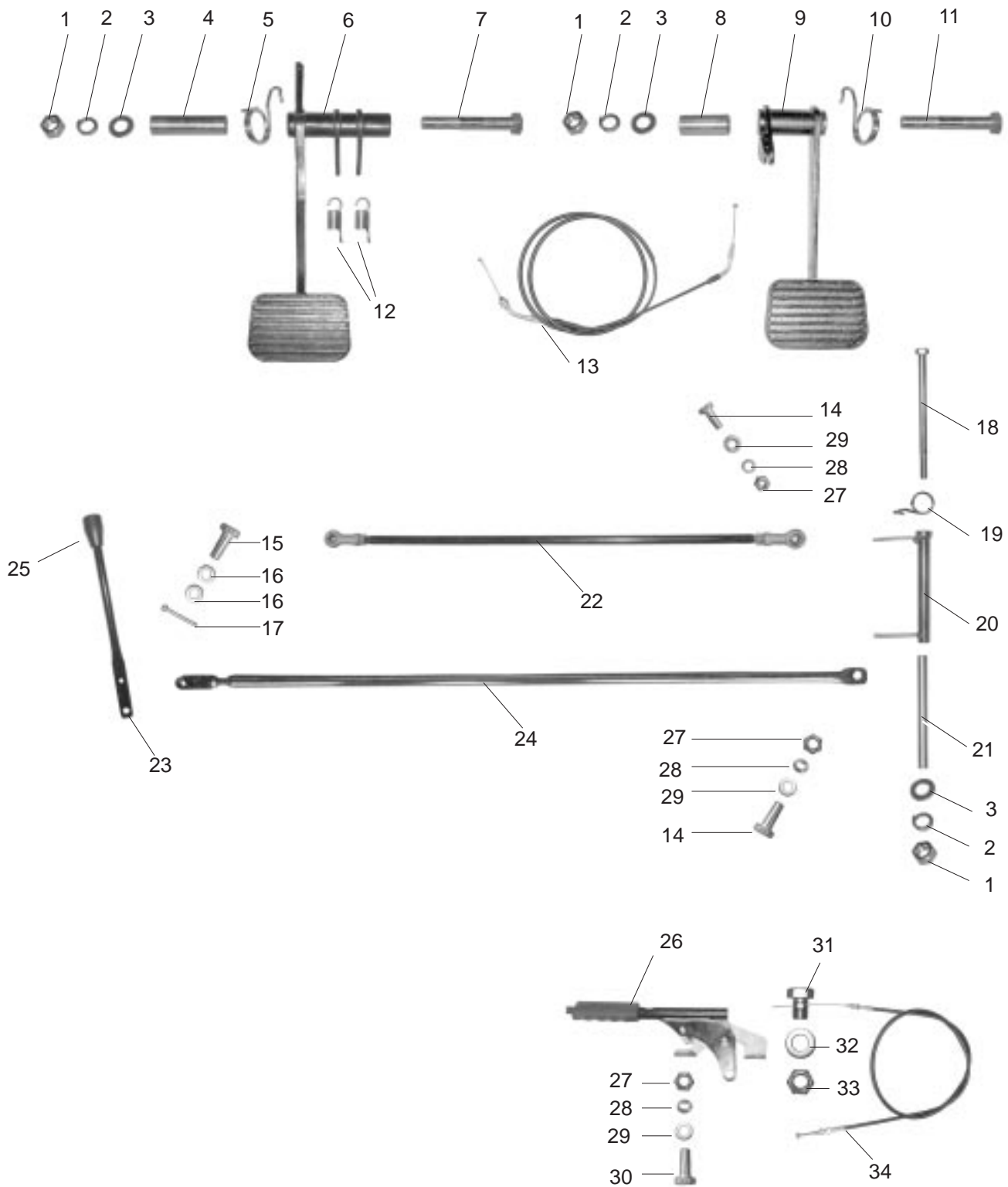
REVERSE ASSY(2)



**Subject to change without notice!**

# FIG. 1

## CONTROLS

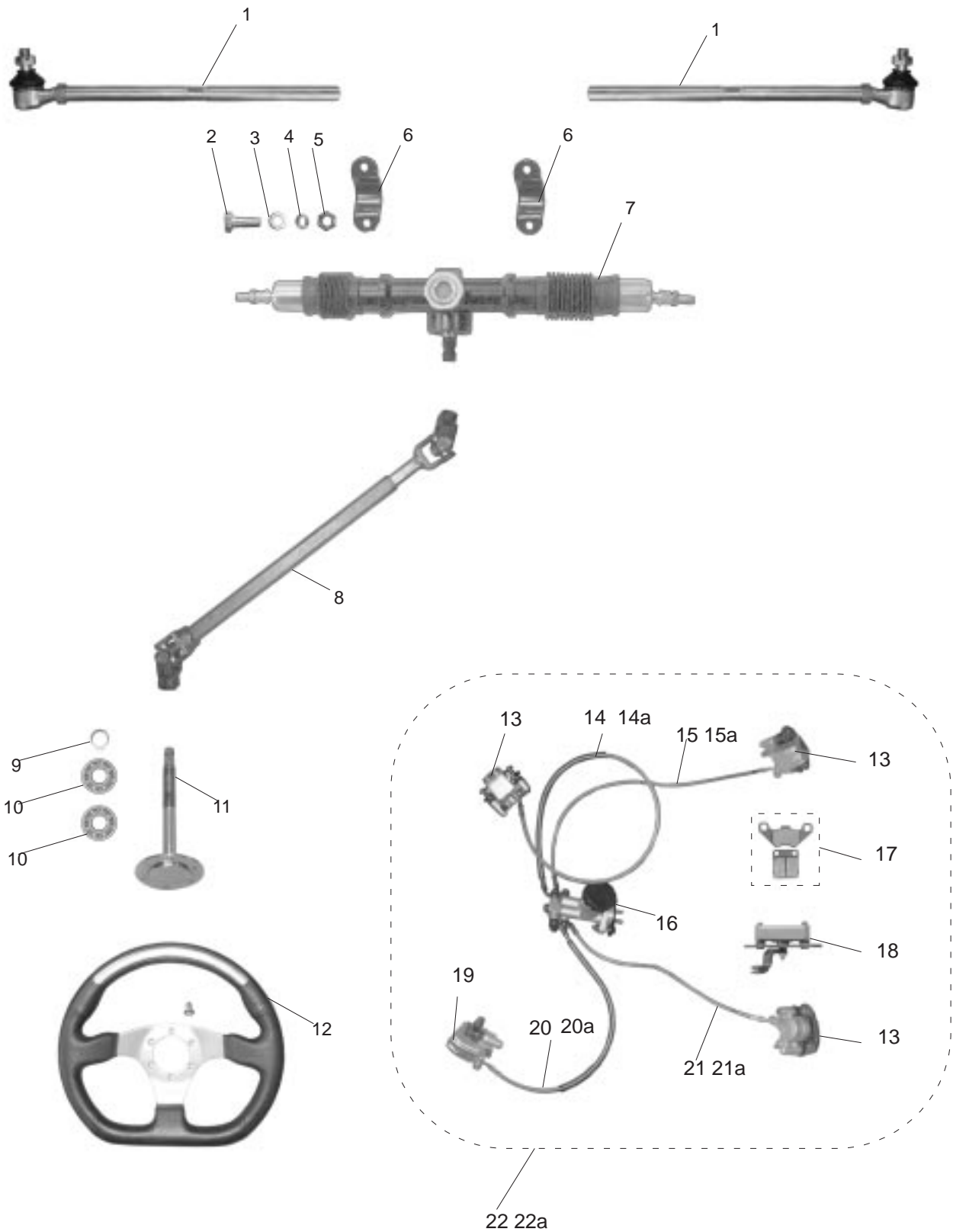


# CONTROLS

REF NO.	PART NO.	DESCRIPTION	REGD NO.
1	GB6171-86	NUT M10X1.25	2
2	GB93-87	SPRING WASHER 10MM	2
3	GB97.1-85	WASHER 10MM	2
4	250-2A-2102001	COLLAR,BRAKE PEDAL	1
5	300-2102006	SPRING,THROTTLE PEDAL(LEFT)	1
6	250-2A-2102100	BRAKE PEDAL	1
7	GB5782-86	BOLT M10X1.25X130	1
8	250-2A-2104001	COLLAR,THROTLE PEDAL	1
9	250-2A-2104100	THROTTLE PEDAL	1
10	G-2100004	SPRING , THROTTLE PEDAL	1
11	GB5782-86	BOLT M10X1.25X80	1
12	G-1813001	SPRING ,BRAKE PEDAL	2
13	250-2A-2104200	CABLE,THROTTLE COMP.	1
14	G-1000011	BOLT,	2
15	A-2100018	DOWEL,	1
16	A-2100019	SPECIAL WASHER	1
17	GB91-86	PIN , 2X20	1
18	GB5782-86	BOLT M10X1.25X170	1
19	300-2102006	SPRING, THROTTLE	1
20	250-2A-1707200	BRACKET, LINKAGE BRIDGE	1
21	250-2A-1707003	COLLAR, BRCKET LINKAGE BRIDGE	1
22	250-2A-1707310	LINKAGE, REVERSE	1
23	250-2A-1707001	CONTROL LEVER	1
24	250-2A-1707100	LINKAGE, CONTROL LEVER	1
25	250-2A-1707002	SHEATH, CONTROL LEVER	1
26	G-2100900	HAND BRAKE LEVER	1
27	GB6170-86	NUT, 8MM	3
28	GB93-87	SPRING WASHER, 8MM	3
29	GB97.1-85	WASHER , 8MM	3
30	GB5783-86	BOLT, M8X25	1
31	G-1700008	SPECIAL BOLT	1
32	GB97.1-85	WASHER , 12MM	1
33	GB6173-85	NUT , M12X1.25	1
34	250-2A-2103120	CABLE, BRAKE BAR	1

# FIG. 2

## STEERING SHAFT ASSY

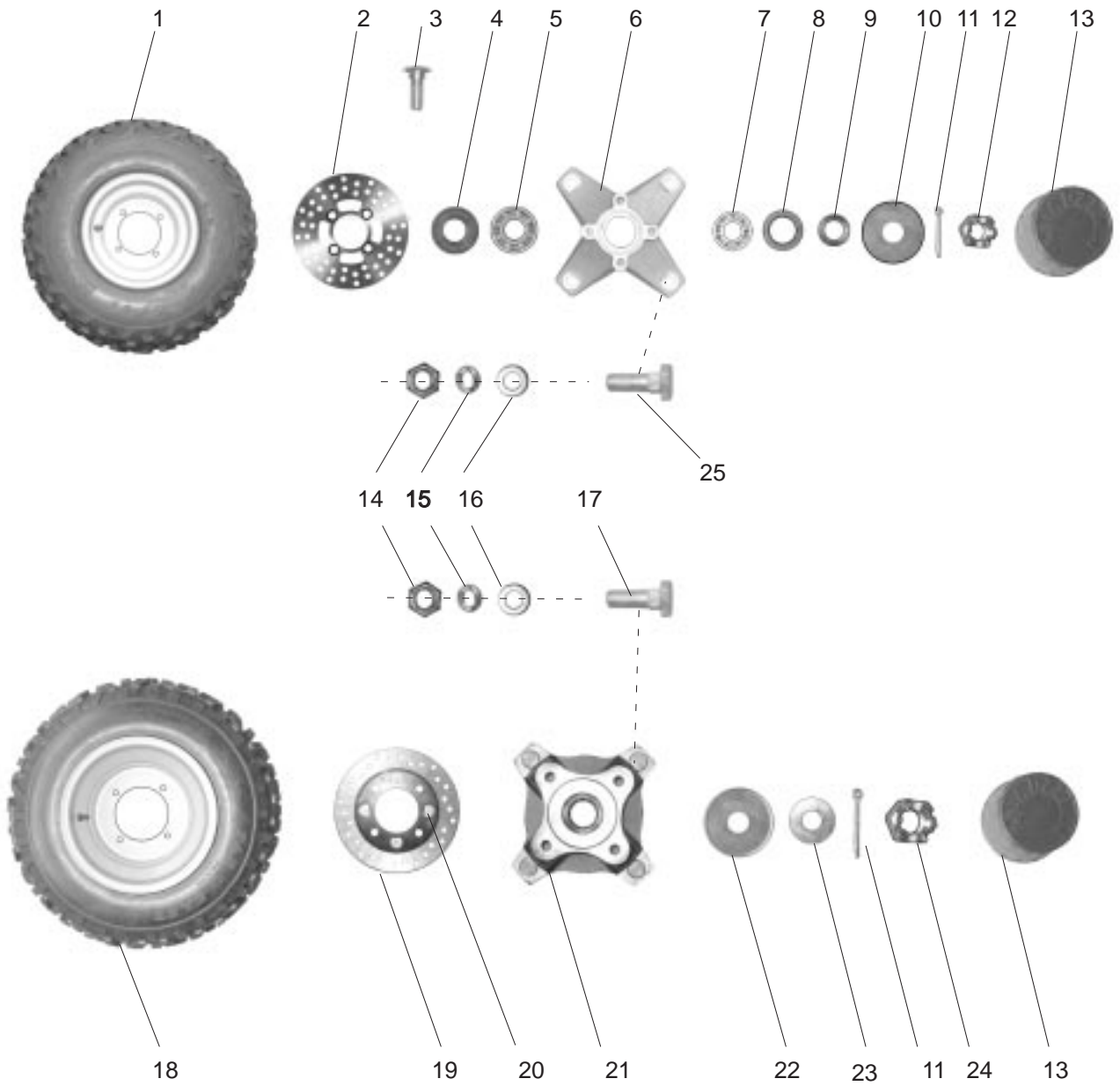






# FIG. 3

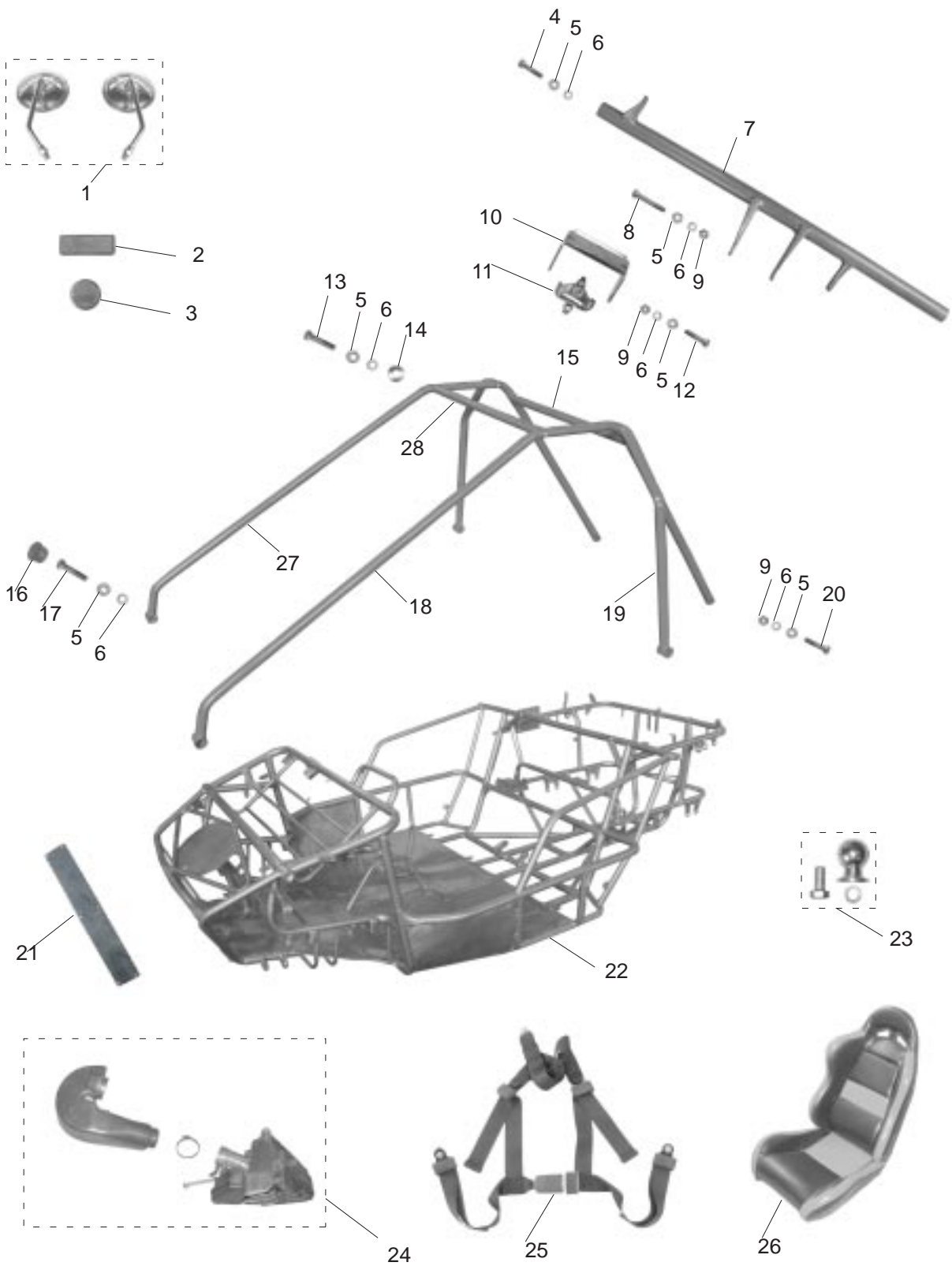
## FRONT WHEEL & REAR WHEEL





# FIG. 4

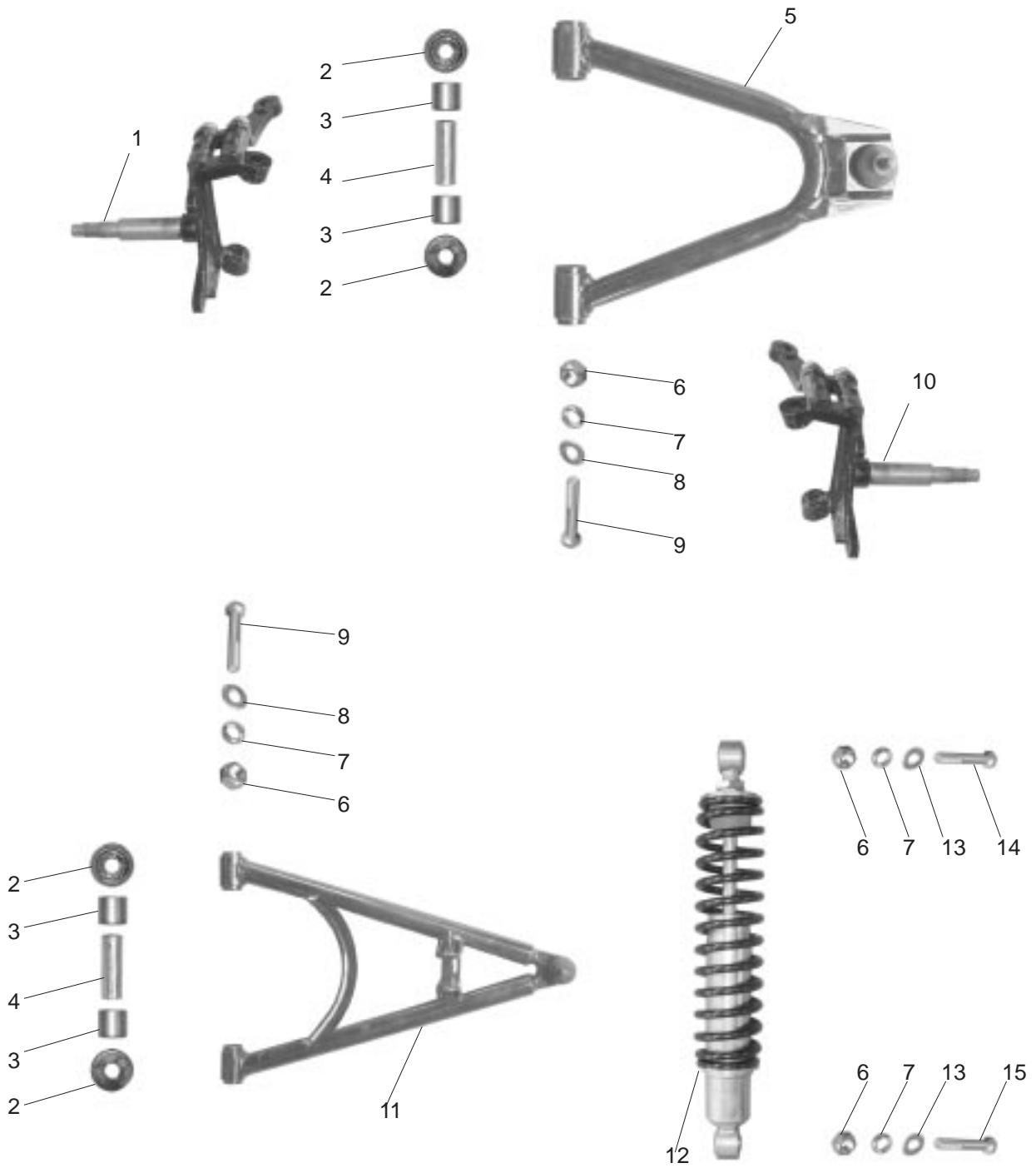
## FRAME ASSY.





# FIG. 5

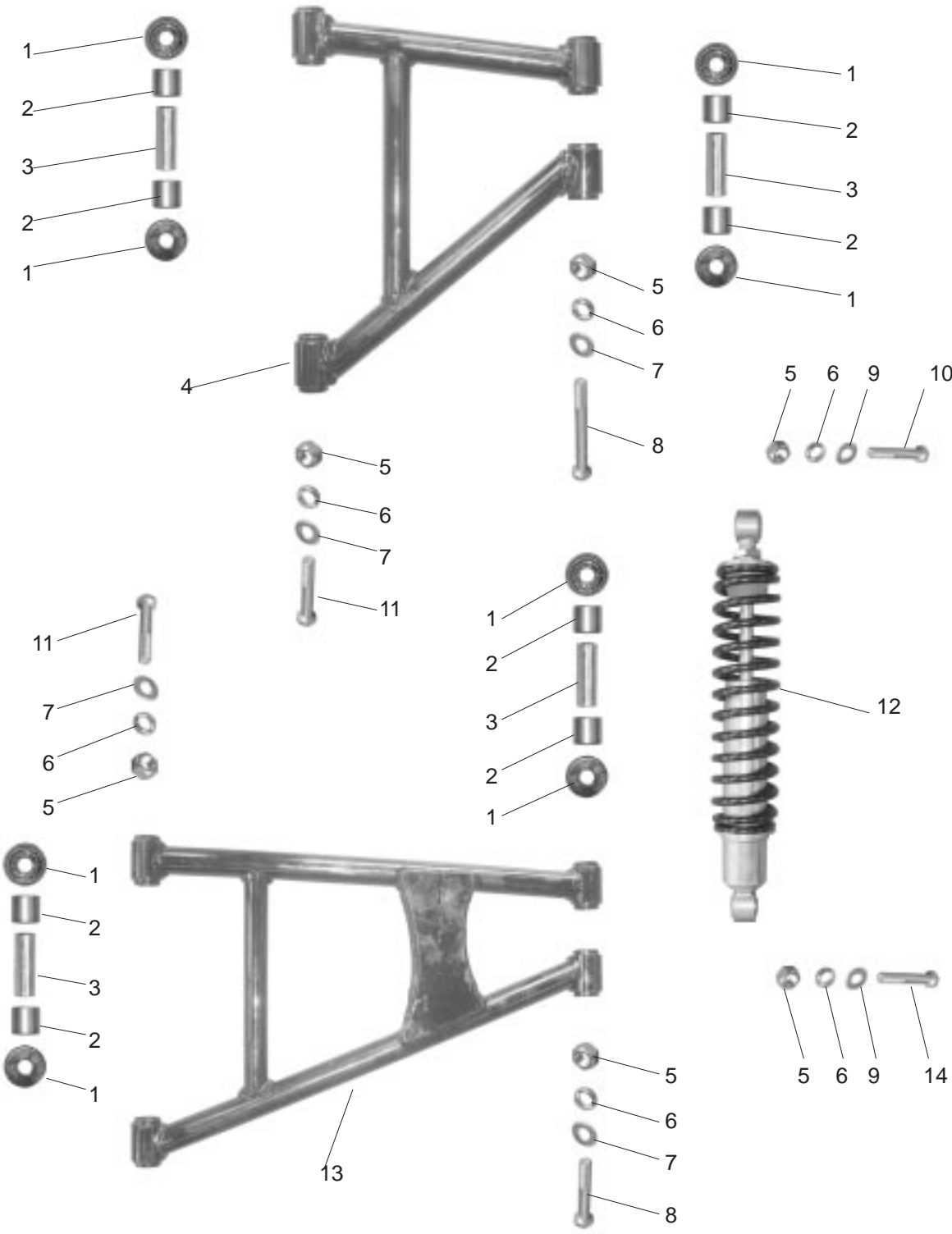
## FRONT SUSPENSION ARM ASSY





# FIG. 6

## REAR SUSPENSION ARM ASSY

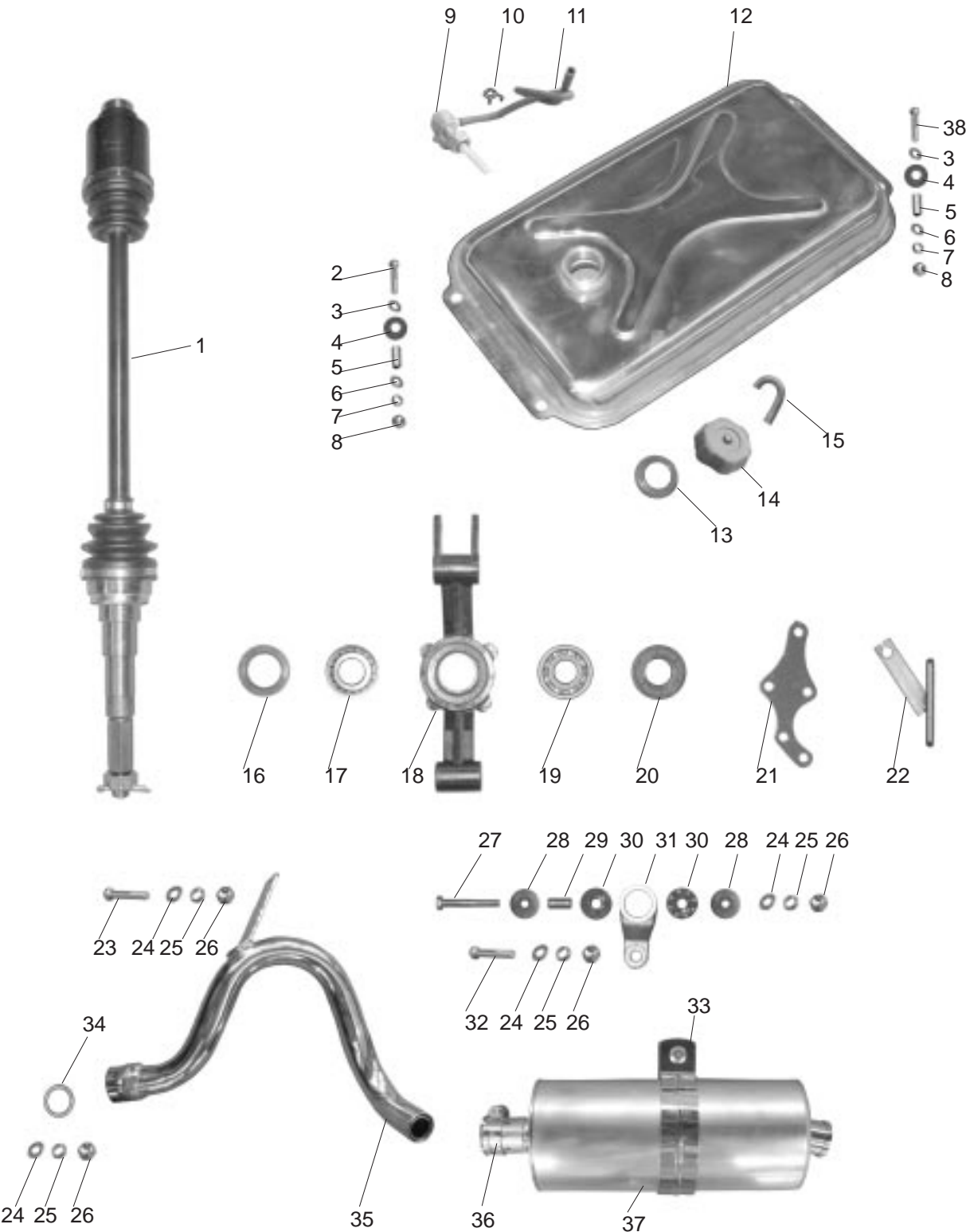






# FIG. 7

## REAR DRIVE AXLE ASSY

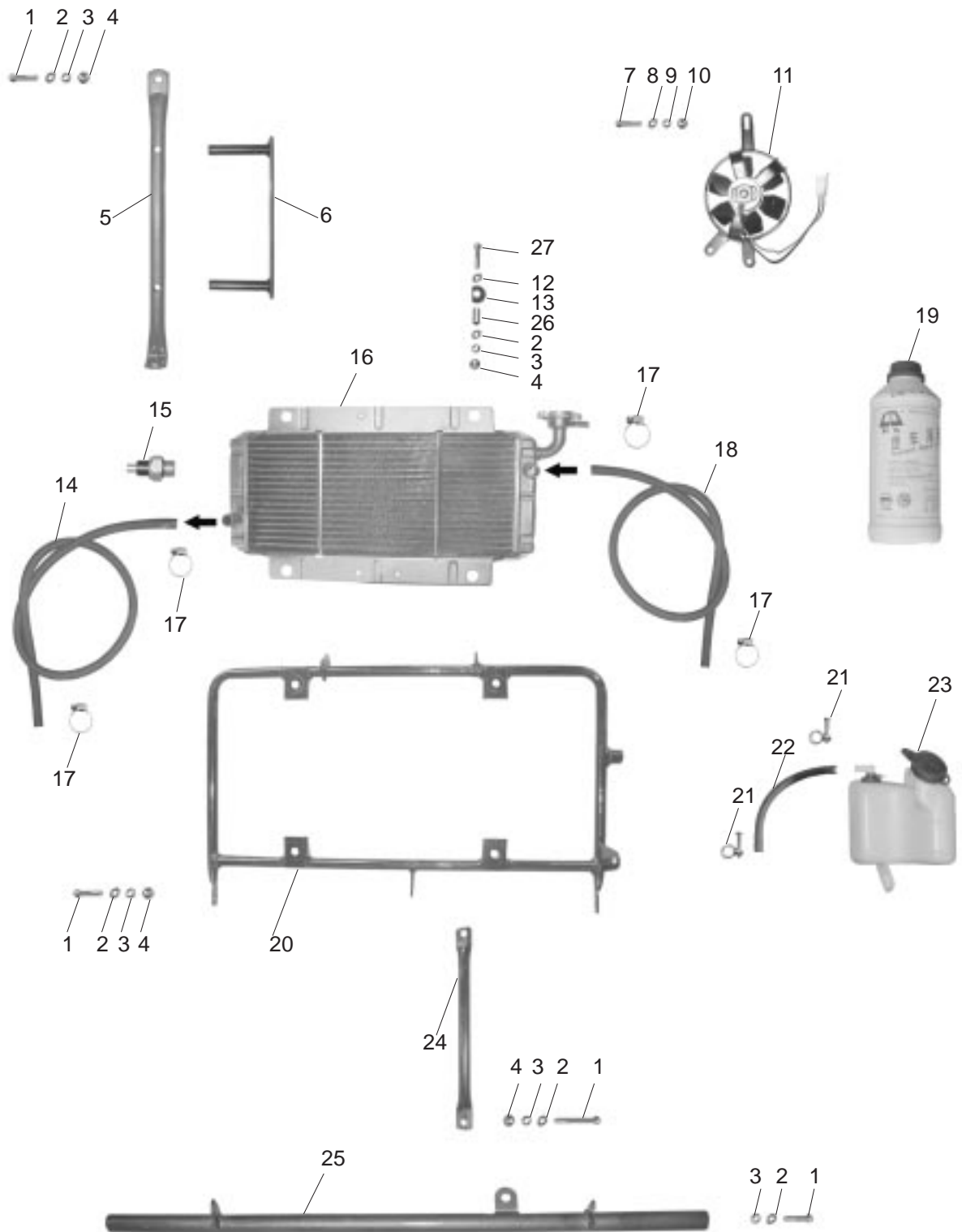


## REAR DRIVE AXLE ASSY

REF NO.	PART NO.	DESCRIPTION	REGD NO.
1	250-2A-1601000	REAR WHEEL AXLE COMP.	1
2	GB5783-86	BOLT, M8X110	2
3	GB96-85	FLAT WASHER,8MM	4
4	G-1200003	CUSHION RUBBER RING	4
5	G-1200002	COLLAR, FUEL TANK	4
6	GB97.1-85	WASHER,8MM	4
7	GB93-87	SPRING WASHER,8MM	4
8	GB6170-86	NUT,8MM	1
9	G-1202000	FUEL TANK COCK	1
10	G-1200005	CLIP, FUEL TUBE	1
11	G-1200001	HOSE, FUEL TANK	1
12	250-2A-1201000	FUEL TANK WELDING BODY	1
13	G-1200007	CUSHION, FUEL TANK CAP	1
14	G-1203000	CAP,FUEL TANK	1
15	A-1202001	HOSE,CAP,FUEL TANK	1
16	HG4-692-67	OIL SEAL 62X40X8	1
17	GB276-86	BEARING 206	1
18	250-2A-1600002	BEARING SHELL,REAR WHEEL AXLE	1
19	GB276-86	BEARING 107	1
20	HG4-692-67	OIL SEAL, 62X42X8	1
21	250-2A-2103003	FIXING PLATE, BRAKE PUMP	1
22	250-2A-2103101	BRACKET WELDING ,BRAKE PUMP	1
23	GB5783-86	BOLT, M8X30	1
24	GB97.1-85	WASHER,8MM	4
25	GB93-87	SPRING WASHER,8MM	4
26	GB6170-86	NUT ,8MM	4
27	GB5782-86	BOLT, M8X45	1
28	A-1300003	BIG WASHER	2
29	A-1300005	INNER COLLAR, CUSHION RUBBER	1
30	A-1300004	CUSHION RUBBER	2
31	250-2A-1300004	CONNECTING BRACKET	1
32	GB5783-86	BOLT ,M8X20	1
33	A250-1300005	CLIP,MUFFLER	1
34	250-2A-1300001	EXHAUST PIPE GASKET	1
35	250-2A-1301000	EXHAUST PIPE	1
36	A250-1304000	CONNECTING CLIP	1
37	A250-1302000	MUFFLER	1
38	GB5783-86	BOLT, M8X50	2

# FIG. 8

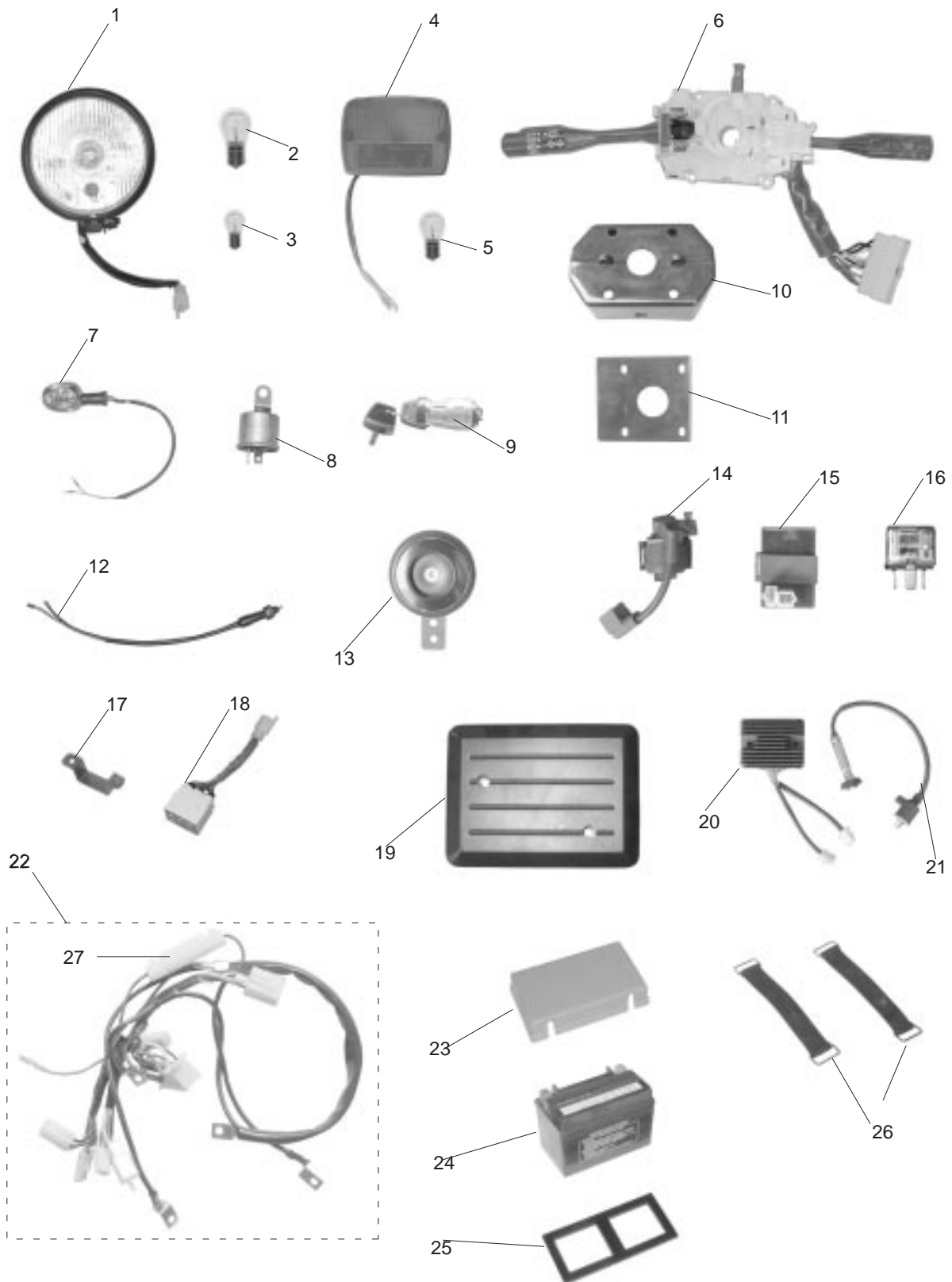
## COOLANT ASSY





# FIG. 9

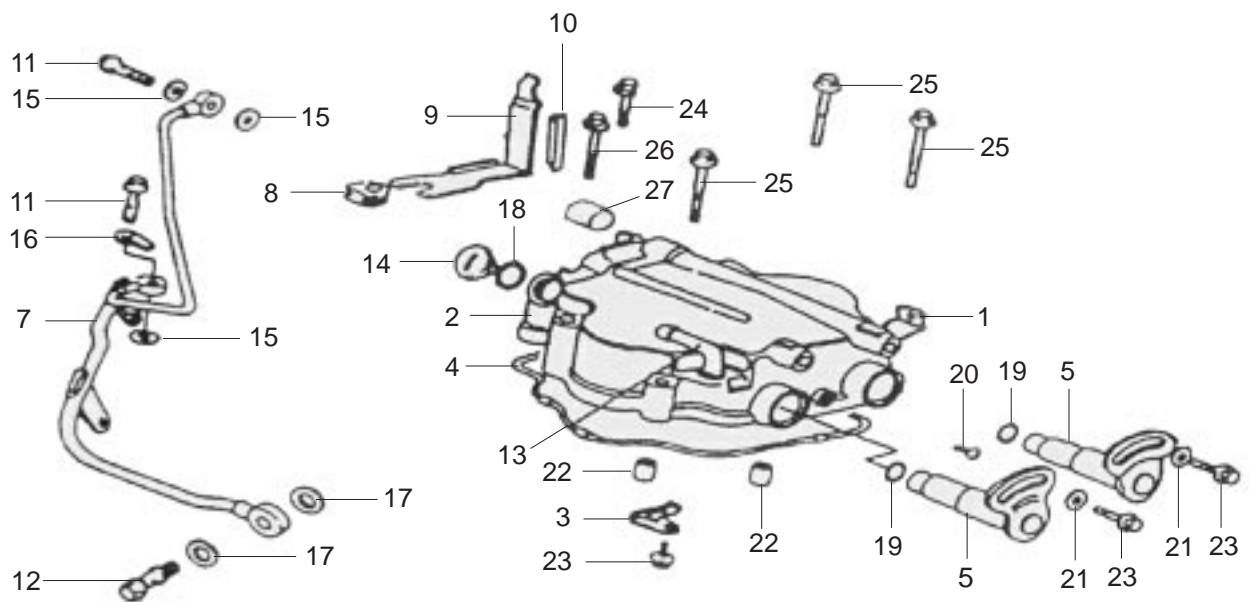
## ELECTRICAL ASSY





# FIG. 10

## CYLINDER HEAD ASSY(1)

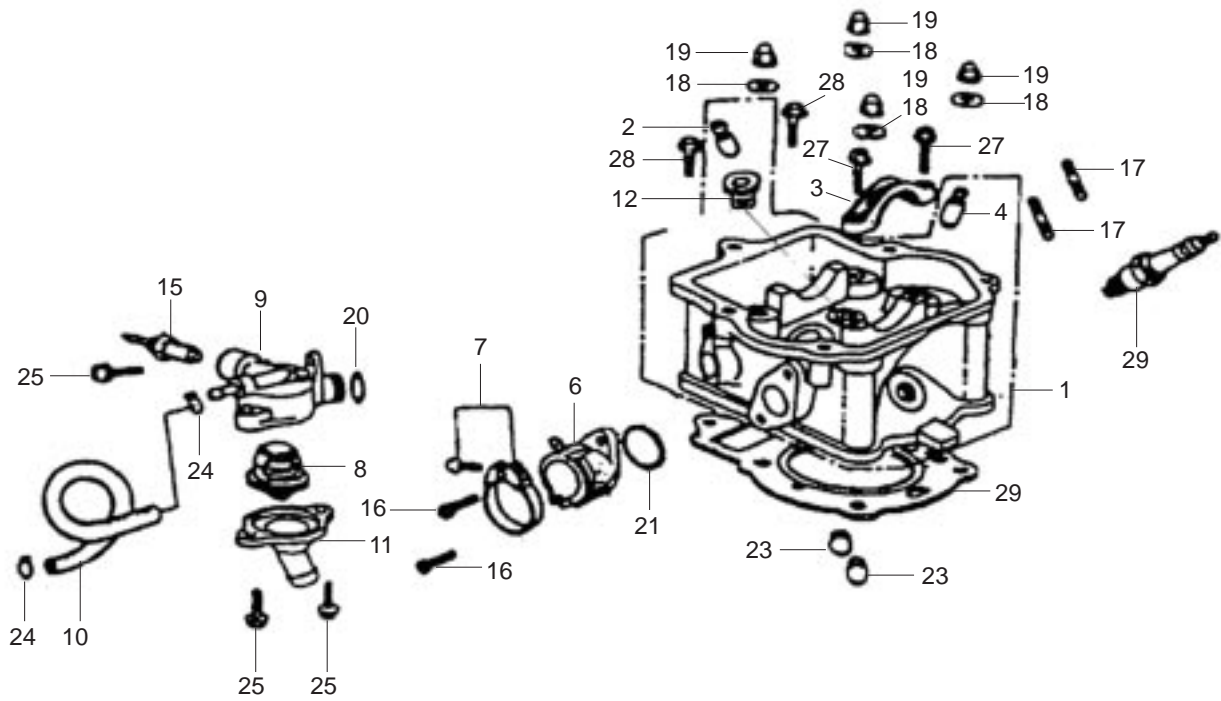






# FIG. 11

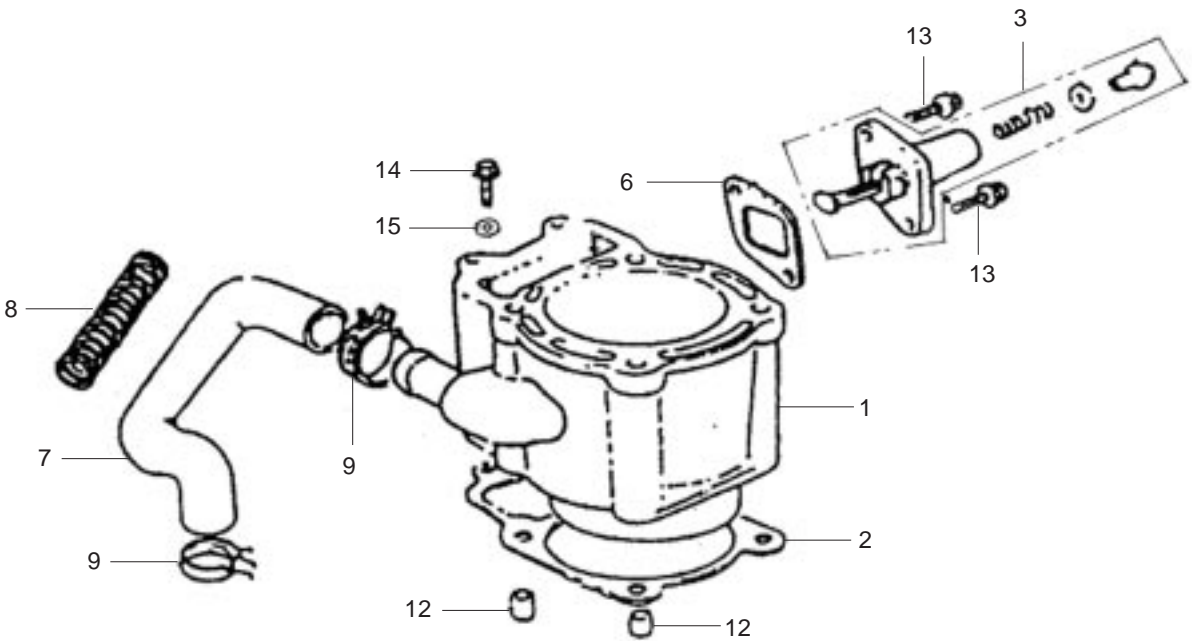
## CYLINDER HEAD ASSY(2)





# FIG. 12

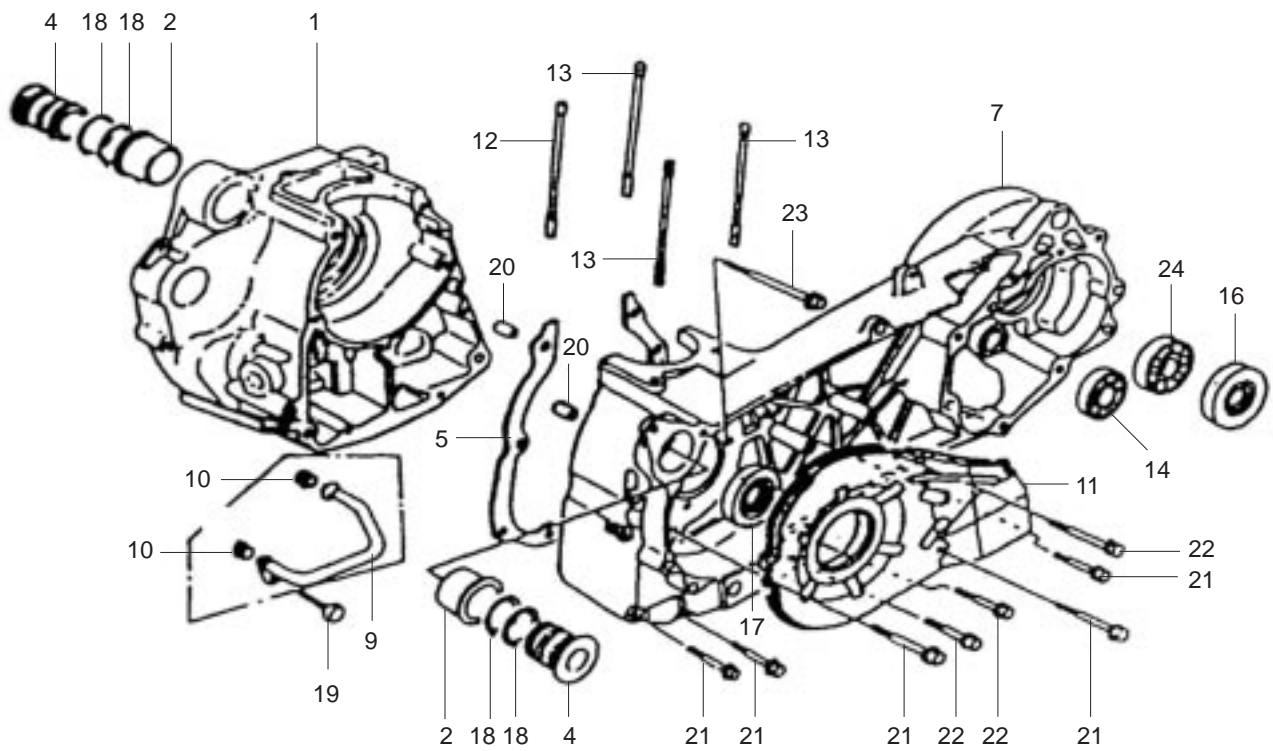
## CYLINDER BODY ASSY





# FIG. 13

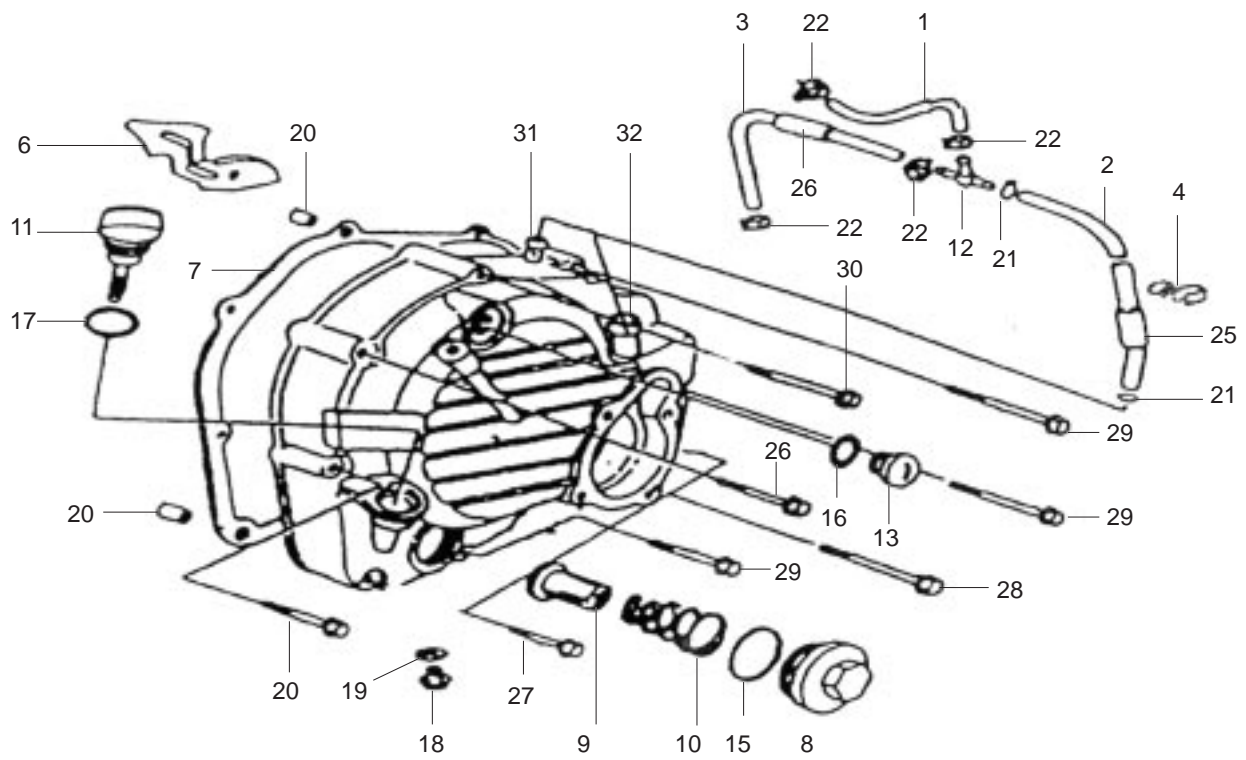
## CRANKCASE ASSY(1)





# FIG. 14

## CRANKCASE ASSY(2)



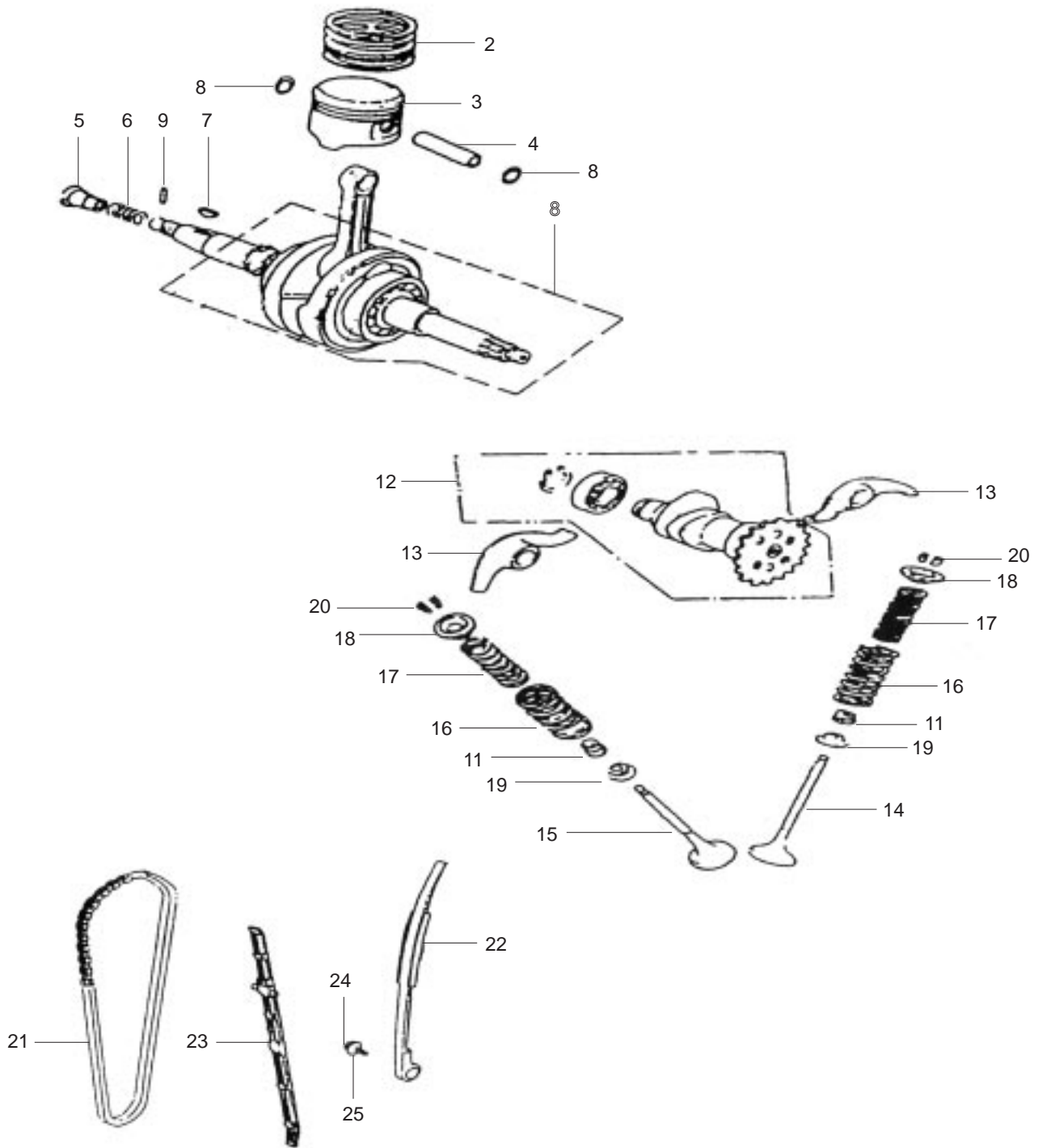


## CRANKCASE ASSY(2)

REF NO.	PART NO.	DESCRIPTION	REGD NO.
1	XF172MM-1003012	BREATHER PIPE(2)	1
2	XF172MM-1003013	BREATHER PIPE(3)	1
3	XF172MM-1003011	BREATHER PIPE(1)	1
4	XF172MM-1003016	PLASTIC CLIP	1
5	XF172MM-1003101	RIGHT CRANK CASE COVER	1
6	XF172MM-1003108	INNER OIL SHIELD, RIGHT COVER	1
7	XF172MM-1003003	GASKET, RIGHT CRANK CASE COVER	1
8	XF125T-1003104	NUT CAP,OIL FILTER	1
9	XF125T-1003120	OIL FILTER SCREEN COMP.	1
10	XF172MM-1003102	SPRING, OIL FILTER SCREEN	1
11	XF172MM-1003103	OIL DIP ROD	1
12	XF172MM-1003017	T-TIE-IN	1
13	XF125-B-1003607	SCREW CAP, M14	1
15	XF125T-1003103	O-RING, NUT CAP, 30.8X3	1
16	XF125-B-1003608	O-RING , 13.8X2.5	1
17	XF125-1003307	O-RING, 18X3	1
18	XF172MM-1003106	OIL DRAIN SCREW, M12X1.5	1
19	XF172MM-1001507	WASHER, 12MM	1
20	XF125-1003005	DOWEL, 8X14	2
21	XF172MM-1003019	CLIP, 9.5	2
22	XF172MM-1003018	CLIP, 11.5	4
25	XF172MM-1003015	THIMBLE, 17X37	1
26	XF172MM-1003014	THIMELE, 13X180	1
27	XF125T-1003011	BOLT, M6X28	1
28	XF172MM-1003022	BOLT, M6X70	3
29	XF125-1003034	BOLT, M6X40	3
30	XF172MM-1003109	SCREW , M6X80	1
31	XF172MM-1003105	TIE-IN, BREATHER PIPE	1
32	XF172MM-1003104	TIE-IN, WATER PIPE	1

# FIG. 15

## CRANKSHAFT PISTON CONNECTING ROD, VALVE TRAIN ASSY

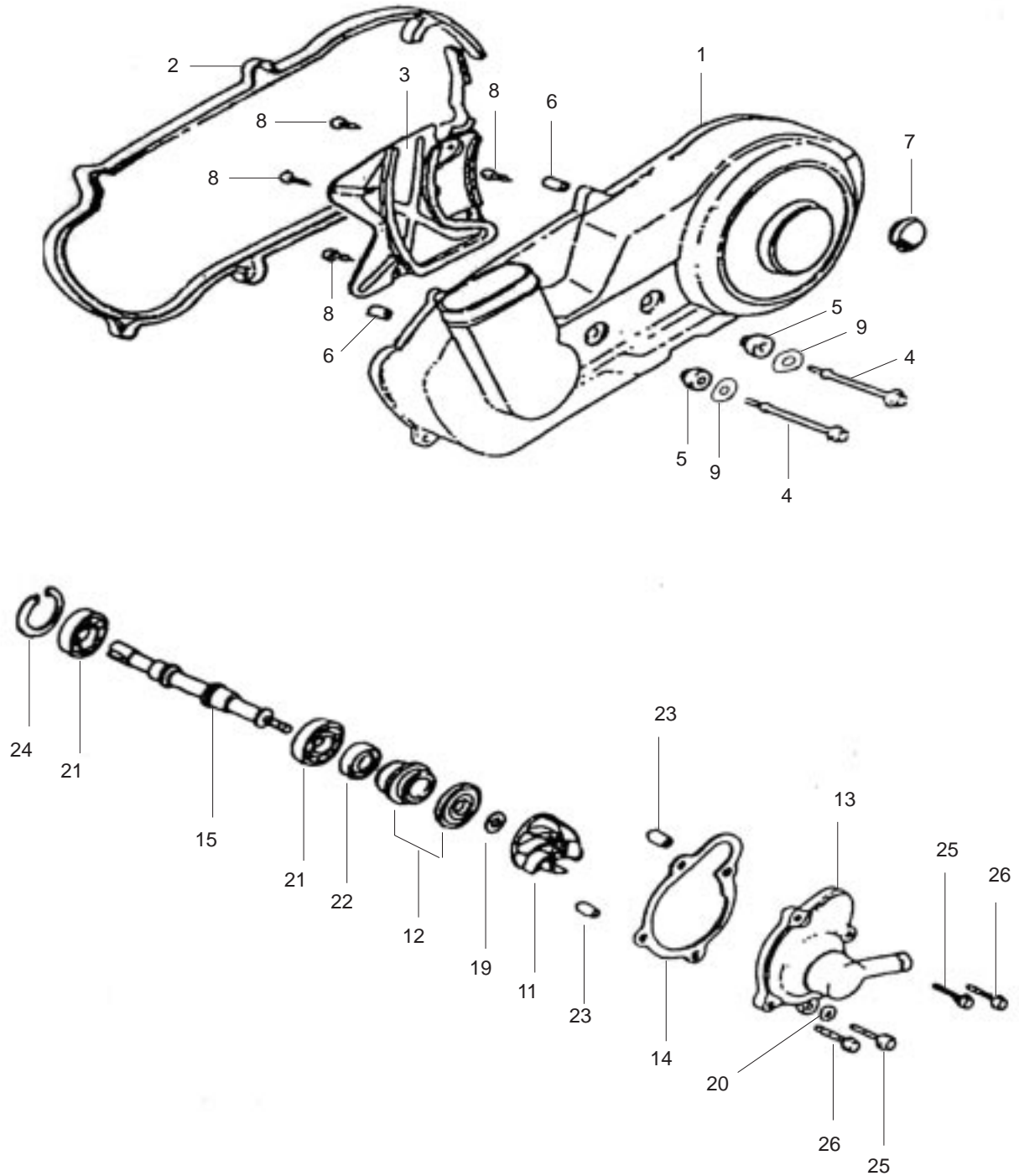


## CRANKSHAFT PISTON CONNECTING ROD ,VALVE TRAIN ASSY

REF NO.	PART NO.	DESCRIPTION	REGD NO.
1	XF172MM-1004100	CRANK SHAFT CONNCTETING ROD COMP.	1
2	172MM-1004002	FIRST PISTON RING	1
	172MM-1004003	SECOND PISTON RING	1
	172MM-1004200	COMBINED OIL RING	1
3	XF172MM-1004001	PISTON	1
4	XF172MM-1004005	PISTON PIN	1
5	XF250-S-1004012	OIL TUBE	1
6	XF250-S-1004011	SPRING, OIL TUBE	1
7	XF125-1004002	WOODRUFF KEY	1
8	XF172MM-1004004	LOCK SPRING, PISTON PIN	2
9	GB309-84	NEEDLE2X12	1
11	XF125T-1001310	OIL-SEAL, VALVE SHAFT	2
12	XF172MM-1005100	CAM SHAFT COMP.	1
13	XF172MM-1005008	TAPPET ROCKER ARM	2
14	XF172MM-1005002	EXHAUST VALVE	1
15	XF172MM-1005001	INTAKE VALVE	1
16	XF172MM-1005003	OUTER SPRING, VALVE	2
17	XF172MM-1005004	INNER SPRING, VALVE	2
18	XF125T-1001305	UPPER SPRING SEAT, VALVE	2
19	XF172MM-1005005	LOWER SPRING SEAT, VALVE	2
20	XF125T-1001306	VALVE KEY CLIP	4
21	XF172MM-1005400	TIMING DRIVER CHAIN	1
22	XF172MM-1005010	CHAIN TENSION COMP.	1
23	XF172MM-1005020	CHAIN GUIDE COMP.	1
24	XF125T-1003203	BOLT,	1
25	XF172MM-1005009	WASHER, TENSION	1

# FIG. 16

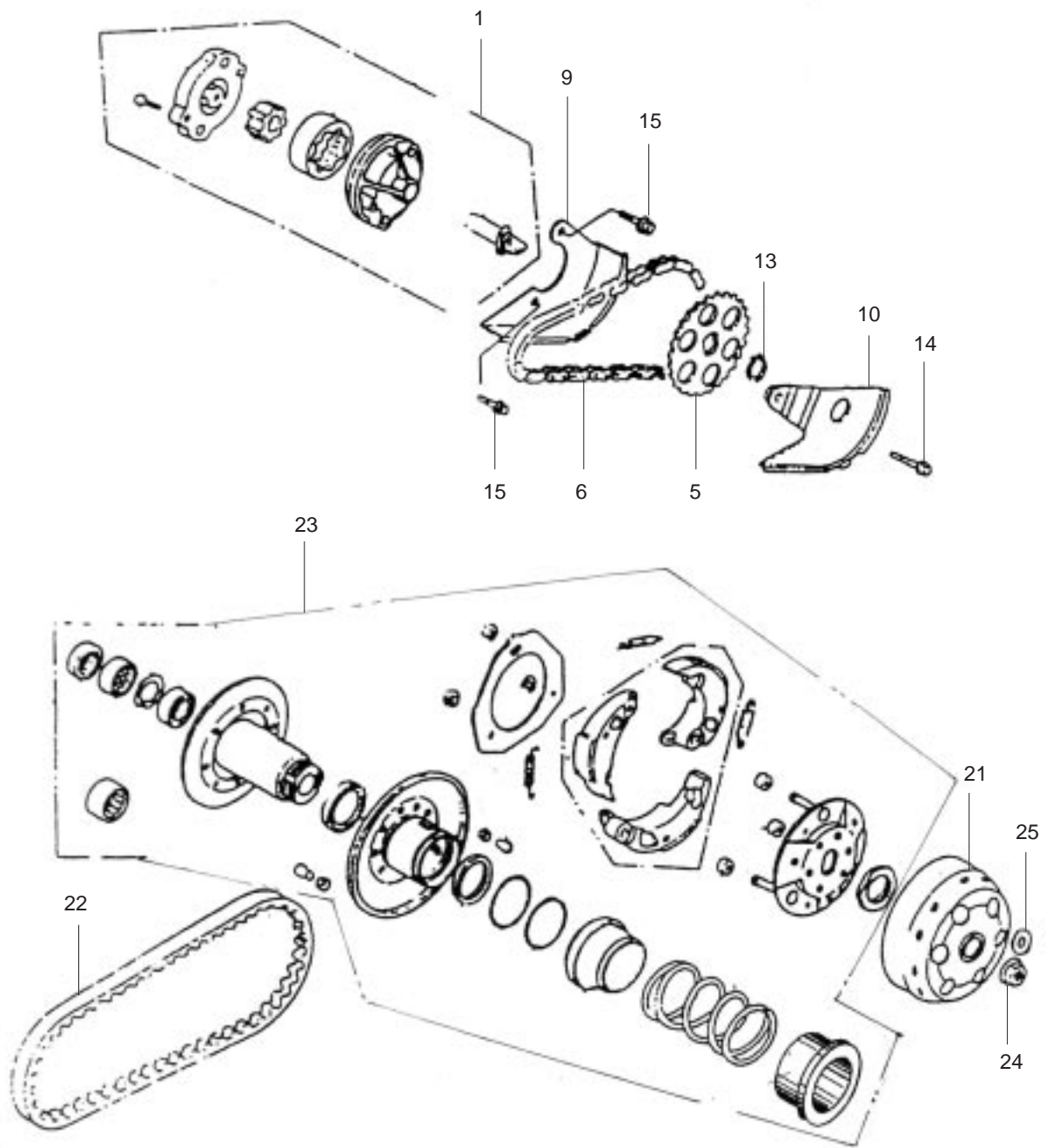
## LEFT COVER, WATER COOLING ASSY





# FIG. 17

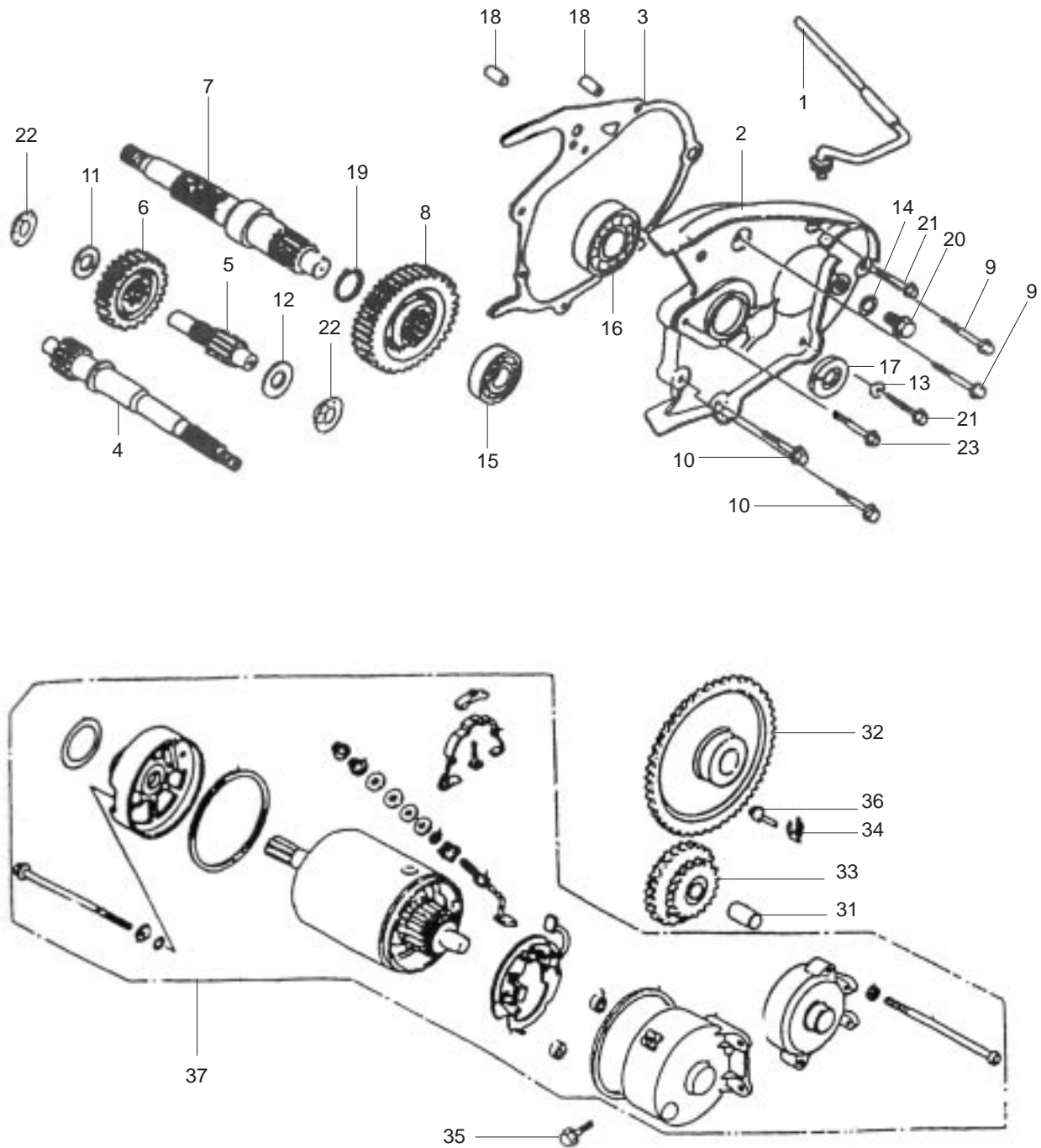
## OIL PUMP, CLUTCH ASSY





# FIG. 18

## SLOWDOWN GEAR, ELECTRIC STARTER ASSY

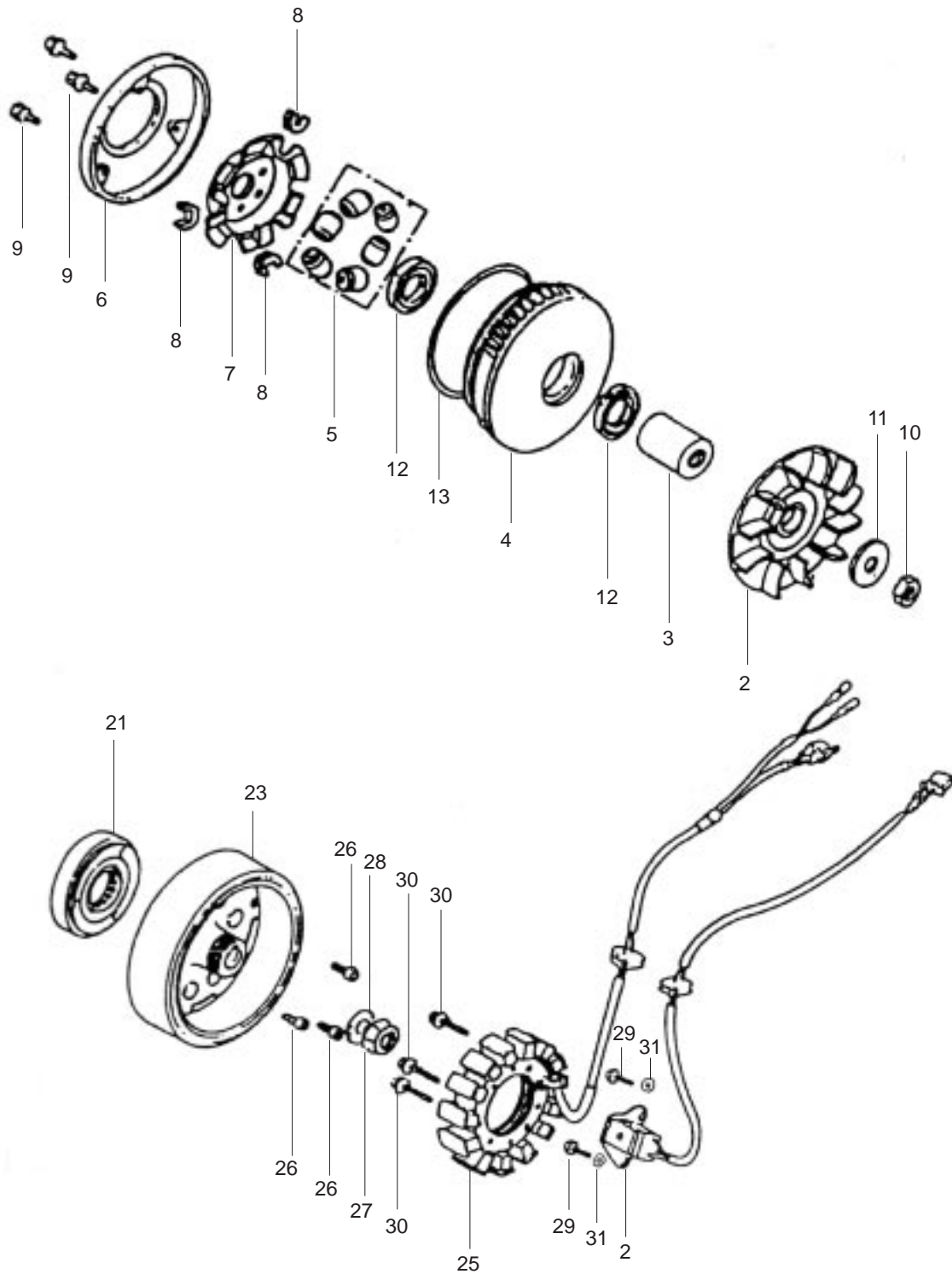






# FIG. 19

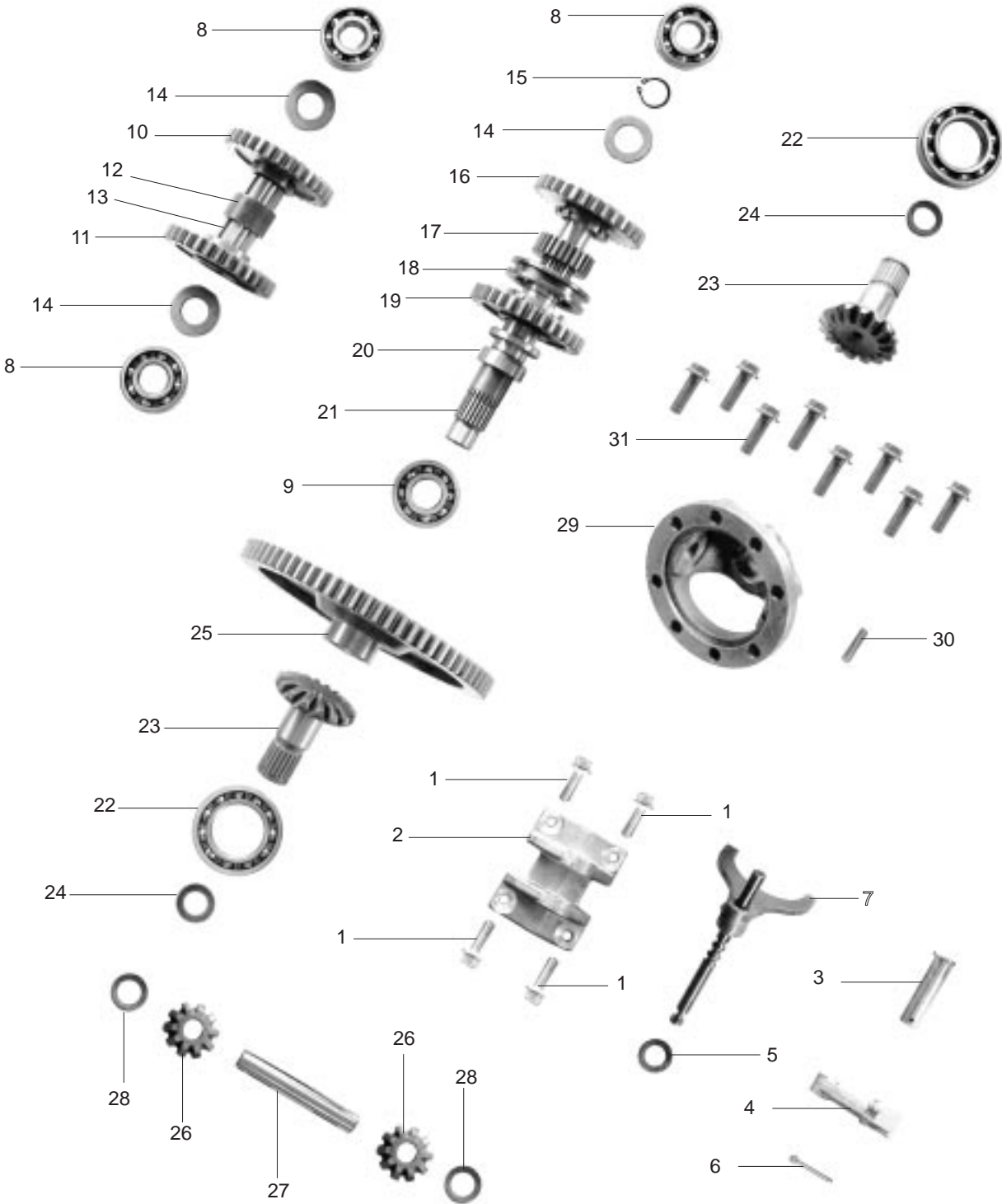
## DRIVER PLATE ASSY





# FIG. 20

## REVERSE ASSY(1)





# FIG. 21

## REVERSE ASSY(2)

