

## **DLX 400IIR Limited Warranty**

The warranty policy applies to those cases where the new vehicle unloaded from its shipping container, set up and delivered by an authorized dealer, and under normal use and service is found to have defects in parts or workmanship under the following terms and conditions. This warranty covers the kart and engine related components for a period of 90 days.

This warranty does not apply to any part, which in opinion of seller was defective because of improper maintenance, improper assembly, alterations, abuse, negligence or accident.

Should warranty service be required on your DLX400IIR during the 90 days warranty period, please contact your nearest authorized dealer for repairs.

## **What is not covered under this warranty**

Misuse, Negligence, Alterations, Accidents or any abnormal use including non Genuine parts, renting or leasing, competition or racing. This warranty does not cover loss of use of the unit or loss of time, or inconvenience or normal wear and deterioration caused by the use or storage of consumable items such as spark plugs, chain, brake shoes, fuses, clutch plate, sprockets, light bulbs, battery and tires.

# CONTENTS

<b>OWNER'S MANUAL</b>	<b>Page</b>
1. FORWARD.....	3
2. A FEW WORDS ABOUT SAFETY.....	4
3. IMPORTANT SAFETY INFORMATION.....	5
4. SAFETY LABELS.....	7
5. ARE YOU READY TO DRIVE?.....	8
6. IS YOUR VEHICLE READY TO DRIVE?.....	10
7. SAFE DRIVING PRECAUTIONS.....	12
8. P.D.I.....	14
9. SPECIFICATIONS.....	16
10. OPERATION.....	18
11. SERVICE INSTRUCTIONS.....	23
12. REPAIR.....	27
13. PERIODICAL CHECK AND SERVICE.....	29
14. WIRING DIAGRAM .....	30

## FOREWORD

Thank you for purchasing our Kart. We hope you will enjoy it. Before you start to operate the Kart, please read through this Owner's Manual carefully as it contains important safety and maintenance information. Failure to follow the warnings contained in this manual can result in serious injuries or death.

Be sure to follow the recommended maintenance schedule and service your Kart accordingly. Preventive maintenance is extremely important to the longevity of your Kart.

Beginners should seek instructions from your dealer or qualified instructors before and during initial use of the Kart. It is also recommended to practice in a large open area until you are familiar with operations of this Kart.

We hope you will have a pleasant experience with our products and thanks again for choosing our Kart.

# A FEW WORDS ABOUT SAFETY

In order to keep everyone safe, you must take responsibility for the safe operation of your Kart.

To help you make informed decisions about safety, we have provided operating procedures and other information on labels and in this manual. This information alerts you to potential hazards that could hurt you or others.

It is not practical or possible to warn you about all hazards associated with operating or maintaining a Kart. You must use your own good judgment.

You will find important safety information in a variety of forms, including:

**Safety Labels** – On the Kart

**Safety Messages** – Preceded by a safety alert symbol and one of two signal words: **WARNING**, or **CAUTION**.

**These signal words mean:**



Death or Serious Injury may result from failure to adhere to the instructions that are described within the **WARNING** labels.

Injury or Damage to the Vehicle may result from failure to adhere to the instructions that are described in the **CAUTION** labels.

**Safety Headings**– such as the Important Safety Reminders or Important Safety Precautions

**Safety Sections** – such as Kart Safety

**Instructions** – how to use this Kart correctly and safely.

This entire manual is filled with important safety information – please read it carefully.

# IMPORTANT SAFETY INFORMATION

Your Kart will provide you with many years of service and pleasure. Provided you take responsibility for your own safety and understand the challenges you can meet while driving.

There is much that you can do to protect yourself while operating your kart. You'll find many helpful recommendations throughout this manual. The following are a few that we consider most important.

## **Follow the Age Recommendation**

Adult Supervision should be present for all people under the age of 16.

## **Always Wear a DOT or Snell approved Motorcycle type Helmet**

It's a proven fact: helmets significantly reduce the number and severity of head injuries. Always wear an approved motorcycle helmet. We also recommend that you wear eye protection, sturdy boots, gloves, and other protective gear.

## **Drive Off-Road Only**

Your Kart is designed and manufactured for off-road use only. The tires are not made for pavement, and the Kart does not have turn signals and other features required for use on public roads. If you need to cross a paved or public road, get off and walk your Kart across.

## **Take Time to Learn & Practice**

Even if you have driven other Karts, take time to become familiar with how this Kart works and handles. Practice in a safe area until you build your skills and get accustomed to this Kart's size and weight.

Because many accidents involve inexperienced or untrained drivers, we urge all drivers to take a training course approved by the Go-Kart Safety Institute. Check with your dealer for more information on training courses.

## **Be Alert for Off-Road Hazards**

The terrain can present a variety of challenges when you drive off-road. Continually "read" the terrain for unexpected turns, drop-offs, rocks, ruts, and other hazards. Always keep your speed low enough to allow time to see and react to hazards.

# **IMPORTANT SAFETY INFORMATION**

## **Drive within Your Limits**

Pushing limits is another major cause of Kart accidents. Never drive beyond your personal abilities or faster than conditions warrant. Remember that alcohol, drugs, fatigue, and inattention can significantly reduce your ability to make good judgments and drive safely.

## **Don't Drink and Drive**

Alcohol and driving don't mix. Even one drink can reduce your ability to respond to changing conditions, and your reaction time gets worse with every additional drink. So don't drink and drive, and don't let your friends drink and drive either.

## **Do not Operate This Kart at Night**

Nighttime conditions greatly reduce a driver's visibility and judgment. So driving at night is dangerous and can increase the possibility for an accident.

## **Never Run Your Kart indoors**

The exhaust from the engine contains a tasteless, odorless and poisonous gas called carbon monoxide.

## **Keep away from Moving Parts of the Kart**

The operator of the Kart should never place their hands or other parts of their body near any moving part of the Kart. Failure to adhere to this warning will cause physical harm to your body.







## **Skidding or Sliding**



The terrain surface can be a major factor affecting turns. Skidding in a turn is more likely to occur on slippery surfaces such as snow, ice, mud and loose gravel. If you skid on ice, you may lose directional control. To avoid skidding on slippery terrain, keep your speed low and drive carefully.

# AFETY LABELS

This section presents some of the most important information and recommendations to help you drive your Kart safely. Please take a few moments to read these pages.

The labels should be considered permanent parts of the Kart. If a label comes off or becomes hard to read, contact your dealer for warning label replacement.

 <p><b>Warning</b></p> <p><b>Risk of Death or Serious Injury</b></p> <p>Always keep guards in place when Operating or Riding as a Passenger in this Fun Kart.</p> <p>Always keep hands, feet, hair and loose clothing away from engine, chain, sprockets and other drive components.</p>	 <p><b>Warning</b></p> <p><b>Risk of Death or Serious Injury</b></p> <p>Always wear and adjust the seatbelt when Operating or Riding as a Passenger in this Fun Kart.</p> <p>Always wear a DOT or Snell Approved Motorcycle Helmet when Operating or Riding as a Passenger in this Fun Kart.</p>	 <p><b>Warning</b></p> <p><b>Risk of Death or Serious Injury</b></p> <p>Always wear and adjust the seatbelt when Operating or Riding as a Passenger in this Fun Kart.</p> <p>Always wear a DOT or Snell Approved Motorcycle Helmet when Operating or Riding as a Passenger in this Fun Kart.</p>	<p><b>Warning</b></p> <p><b>Risk of Death or Serious Injury</b></p> <p>Always restrain long hair above shoulder level. Restrain loose clothing from reaching behind or below the seat.</p> <p>Guards are supplementary safety devices. The restraint of long hair and loose clothing is the primary means of avoiding Death or Injury due to entanglement.</p>
			<p><b>Warning</b></p> <p><b>Risk of Death or Serious Injury</b></p> <p>Always restrain long hair above shoulder level. Restrain loose clothing from reaching behind or below the seat.</p> <p>Guards are supplementary safety devices. The restraint of long hair and loose clothing is the primary means of avoiding Death or Injury due to entanglement.</p>
			<p><b>Warning</b></p> <p>Failure to read, understand and follow the <b>Warnings and Instructions</b> for the safe use of this vehicle may result in Death or Serious Injury!</p> <p>This information is contained on various other Warning decals attached to the kart and in the Owner's / Operator's Manual supplied with this kart.</p> <p>If you did not receive any of these materials or they become damaged contact your dealer and request to have a copy sent to you.</p>
<p><b>Warning</b></p>  <p>This kart is not suitable for operators or passengers under the age of nine. Combined weight limit for rider and passenger is 300 lbs.</p>			<p><b>Warning</b></p>  <p>Risk of Injury and Severe Burns Never touch hot surfaces.</p>
		<p><b>Warning</b></p>  <p><b>Risk of Death or Serious Injury</b> Never allow riders or passengers except when properly seated and wearing a seat belt in a two seat kart.</p>	

 <p><b>Caution</b></p> <p>Risk of Injury or Damage to Vehicle Do not step on this guard.</p>	 <p><b>Caution</b></p> <p>Risk of Injury or Damage to Vehicle Do not step on this guard.</p>	<p><b>Warning</b></p> <p><b>Risk of Death or Serious Injury</b></p> <p>Improper Operation of this Kart can result in loss of control causing Accidents, Injuries and Property Damage</p> <p>Always make sure that Operators, Passengers, and Responsible Adult Supervisors Read and Understand the content of the Owner/Operator Manual</p> <p>Always wear and adjust the seatbelt when Operating or Riding as a Passenger in this Fun Kart.</p> <p>Always wear a DOT or Snell Approved Motorcycle Helmet when Operating or Riding as a Passenger in this Fun Kart.</p> <p>Always restrain long hair above shoulder level. Restrain loose clothing from reaching behind or below the seat. Guards are supplementary safety devices. The restraint of long hair and loose clothing is the primary means of avoiding Death or Injury due to entanglement.</p> <p>Always make sure that the operator is properly seated and has the brake engaged before starting the engine.</p> <p>Never operate this kart after consuming drugs or alcohol.</p> <p>Never operate this kart on streets or other public thoroughfares.</p> <p>Never attempt jumps, spins or other stunts when operating this kart.</p> <p>Never operate this kart at speeds too fast for your skill level or for the operating conditions.</p> <p>Never attempt to use this kart for racing or commercial use.</p> <p>Operators and passengers must be of the appropriate age, skill level and possess sufficient cognitive and intellectual abilities to fully understand the operating requirements and restrictions for the use of this Fun Kart.</p>
---	---	--

## ARE YOU READY TO DRIVE?

Before each drive, you need to make sure you and your Kart are both ready to drive. To help get you prepared, this section discusses how to evaluate your driving readiness, what items you should check on your Kart, and adjustments to make for your comfort, convenience, or safety.

Before you drive your Kart for the first time, we urge you to:

- Read this owner's manual and the labels on your Kart carefully.
- Make sure you understand all the safety messages.
- Know how to operate all the controls.
- Have adult present if under 16 years old.

Before each drive, be sure:

- You wear your seat belt at all times while driving your Kart.
- You feel well and are in good physical and mental condition.
- You are wearing an approved motorcycle type helmet (with chin strap tightened securely), eye protection, and other protective clothing.
- You don't have any alcohol or drugs in your system.

### Protective Apparel

For your safety, we strongly recommend that you always wear an DOT or Snell approved motorcycle type helmet, eye protection, boots, gloves, long pants, and long-sleeved shirt or jacket whenever you drive. Although complete protection is not possible, wearing proper gear can reduce the chance of injury when you drive.

The following suggestions will help you choose the proper driving gear.

### Helmets and Eyes Protection

Your helmet is the most important piece of driving gear of you because it offers the best protection against head injuries. A helmet should fit your head comfortably and securely.

An open-face helmet offers some protection, but a full-face helmet offers more. Regardless of the style, look for a DOT (Department of Transportation) or Snell sticker on any helmet you buy. Always wear a face shield or goggles to protect your eyes and help your vision.

**Operating this Go-Kart without wearing an approved motorcycle helmet, eye protection and protective clothing could increase your chances of head and/or eye injury, and the possibility of death in a severe accident.**

Always wear an approved motorcycle helmet that fits properly and wear eye protection (goggles or face shield) and long-sleeved shirt or jacket and long pants.



**Warning**



# ARE YOU READY TO DRIVE?

## Additional Driving Gear

In addition to a helmet and eye protection, we also recommend:

- Sturdy off-road motorcycle boots to help protect your feet, ankles, and lower legs.
- Off-road motorcycle gloves to help protect your hands.
- Driving pants with knee and hip pads, a driving jersey with padded elbows, and a chest/shoulder protector.

## Driving Training

Developing your driving skills is an on-going process. Even if you have driven other Karts, before take time to become familiar with how this Kart works and handles. Practice driving the Kart in a safe area to build your skills. Do not drive in rough terrain until you get accustomed to the Kart's controls, and feel comfortable with its size and weight.



### WARNING

Operating this Kart without your seat belt could cause you thrown from the kart, causing serious injury or death.

## Age Recommendation

It is strongly recommended that no one under the age of 16 be permitted to operate this Go-Kart without adult supervision.



### WARNING

A child under 16 should have adult supervision when operating the Kart.

## No Alcohol or Drugs

Alcohol, drugs and Karts don't mix. Even a small amount of alcohol can impair your ability to operate a Kart safely. Likewise, drugs-even if prescribed by a physician-can be dangerous while operating a Kart. Consult your doctor to be sure it is safe to operate a vehicle after taking medication.



### WARNING

Operating this Kart after consuming alcohol or drugs can seriously affect your judgment, cause you to react more slowly, affect your balance and perception, and could result in serious injury or death.

Never consume alcohol or drugs before or while operating this Kart.

# IS YOUR VEHICLE READY TO DRIVE?

Before each drive, it is important to inspect your Kart and make sure any problems you find are corrected. A pre-drive inspection is a must, not only for safety, but because having a breakdown, or even a flat tire, can be a major inconvenience.

If your Kart has overturned or has been involved in a collision, do not drive it until your Kart has been inspected by your dealer. There may be damages or other problems you cannot see.



## **WARNING**

**Improperly maintaining this Kart or failing to correct a problem before driving can cause a crash in which you can be seriously hurt or killed.**

**Always perform a pre-drive inspection before every drive and correct any problems.**

## **Pre-drive Inspection**

Check the following items before you get on the Kart:

### ■ Engine Oil

Check the level and add oil if needed. Check for leaks.

### ■ Fuel

Check the level and add fuel if needed. Also make sure the fuel fill cap is securely fastened. Check for leaks.

### ■ Tires

Use a gauge to check the air pressure. Adjust if needed. Also look for signs of damages or excessive wear.

### ■ Nuts & Bolts

Check the wheels to see that the axle nuts are tight. Use a wrench to make sure all accessible nuts; bolts, and fasteners are tight.

### ■ Underbody & Exhaust System

Check for and remove any dirt, vegetation or other debris that could be a fire hazard or interfere with the proper operation of the Kart.

### ■ Air Cleaner Housing Drain Tube

Check for deposits in the drain tube. If necessary, clean the tube and check the air cleaner housing.

## IS YOUR VEHICLE READY TO DRIVE?

### ■ Leaks, Loose Parts

Walk around your Kart and look for anything that appears unusual, such as a leak or loose cable.

### ■ Lights

Make sure the headlight; brake light and taillight are working properly.

### ■ Throttle

Check the freeplay and adjust if needed. Press the throttle to make sure it moves smoothly without sticking, and snaps back automatically when it is released.

### ■ Brakes

Press the brake pedal several times, check for proper brake pedal free play. Make sure there is no brake fluid leakage.

### ■ Engine Stop Button

While engine is running, press and hold the Engine Stop Button for two seconds. Make sure engine stops.

### ■ Steering Wheel

Check that the wheels turn properly as you turn the steering wheel.

### ■ Cable

Check all cable housings for wear. Check the fittings for looseness. Replace or tighten as needed.

### ■ Seat Belts

Check your seat belts make sure that the locking latch works and that you can adjust them.

# SAFE DRIVING PRECAUTIONS

## Off-Road Use Only

Your Kart and its tires are designed and manufactured for off-road use only, not for pavement. Driving on pavement can affect handling and control. You should not drive your Kart on pavement.



### WARNING

**Operating this Kart on paved surfaces may seriously affect handling and control of the Kart, and may cause the vehicle to go out of control.**

**Never operate the Kart on any paved surfaces, including sidewalks, driveways, parking lots and streets.**

When driving off-road, also remember to always obey local off-road driving laws and regulations. Obtain permission to drive on private property. Avoid posted areas and obey “no trespassing” signs.

You should never drive your Kart on public streets, roads or highways, even if they are not paved. Drivers of street vehicles may have difficulty seeing and avoiding you, which could lead to a collision. In many states it is illegal to operate Karts on public streets, roads and highways.



### WARNING

**Operating this Kart on public streets, roads or highways could cause a collision with another vehicle.**

**Never operate this Go-Kart on any public streets, roads or highways; it is dirt, gravel or pavement.**

## Keep Hands and Feet on Controls

When driving your Kart. Always keep both hands on the steering wheel and both feet on the foot controls. It is important to maintain your balance and to control the Kart. Removing hands or feet away from the controls can reduce your ability to react and control the Kart.



### WARNING

**Removing hand from Steering wheel or feet from foot controls during operation can reduce your ability to control the Kart or could cause you to lose your balance and fall off the Kart.**

**Always keep both hands on the steering wheel and both feet on the foot controls of your kart during operation.**

# SAFE DRIVING PRECAUTIONS

## Control Speed

Driving at excessive speed increases the chance of an accident. In choosing a proper speed, you need to consider the capability of your Kart, the terrain, visibility and other operating conditions, plus your own skills and experience.

 **WARNING**

**Operating this Kart at excessive speeds your chances of losing control of the Kart, which can result in an accident.**

**Always drive at a speed that is proper for your Kart, the terrain, visibility and other operating conditions, and your experience.**

## Use Care on Unfamiliar or Rough Terrain

Before driving in a new area, always check the terrain thoroughly. Don't drive fast on unfamiliar terrain or when visibility is limited. (It's sometimes difficult to see obstructions like hidden rocks, bumps, or holes in time to react.)

 **WARNING**

**Failure to use extra care when Operating this Kart on unfamiliar terrain could result in the Kart overturning or going out of control.**

**Go slowly and be extra careful when operating on unfamiliar terrain. Always be alert to changing terrain conditions when operating the Kart.**

Never drive past the limit of visibility. Maintain a safe distance between your Kart and other off-road vehicles. Always exercise caution and use extra care on rough, slippery and loose terrain.

 **WARNING**

**Failure to use extra care when Operating this Kart on excessively rough, slippery or loose terrain could cause loss of traction or vehicle control, which could result in an accident, including an overturn.**

**Do not operate on excessively rough, slippery or loose terrain until you have learned and practiced the skills necessary to control the Kart on such terrain. Always be especially cautious on these kinds of terrain.**

## Do Not Perform Stunts

You should always operate your Kart in a safe and reasonable manner. When driving, always keep all four wheels on the ground.

 **WARNING**

**Attempting wheelies, jumps, and other stunts increase the chance of an accident, including an overturn.**

**Never attempt stunts, such as wheelies or jumps. Don't try to show off.**



## **P.D.I.**

- a.** Install Rear Shocks and tighten the nuts.
- b.** Install Ball Head, Tie Rod, tighten the Castle Nut and insert the cotter Pin.
- c.** Install Dust Seals; align the Ball Head Bolt, Knuckle Support to the square hole on the Lower A-Arm.
- d.** Install Flange Nut and tighten it (>88.9 foot lbs)
- e.** Install Front Tires and tighten the nuts.
- f.** Install Rear Tires, tighten the nuts, insert cotter Pin and put on the Rubber Cover.
- g.** Raise the Roll cage bar as what picture shows.
- h.** Install C.B.C custom bar cage Rear., put on R-Washer.
- i.**
- j.** Install Headrest.
- k.** Check all nuts and bolts, wiring, cables, fuel line, and switches and tire pressure.
- l.** Fill battery with Acid and charge, check and fill the engine with the recommended oil.
- m.** Fill fuel tank with Unleaded Gasoline, and turn on the ignition switch to start the engine.

# SPECIFICATIONS

Dimension(mm)-----	2580*1580*1500
Wheel base(mm)-----	1950
Total Weight(Kg)-----	398
Max.speed(Km/h)-----	84
Front shock absorber length (mm)-----	450
Rear shock absorber length(mm)-----	430
Frontsuspension-----	Independent suspension system ,front crossarm
Rear suspension-----	Independent suspension system ,rear crossarm
Number of Seat-----	2
Specification of front type and wheel rim-----	25x8-12/12x6
Specification of Rear type and wheel rim-----	25x10-12/12x8
Brake mode-----	Hydraulic Disc
Ground clearance(mm)-----	330
Capability of fuel tanl(L)-----	20
DRIVE TRAIN-----	-Shaft drive, 2WD

## ENGINE

Engine Type -----	1-cylinder, 4-stroock,strong wind- cooled and liquid-cooled
Cylinder diameter -----	83mm,
Piston run distance -----	71.6mm
Cylinder capacity:-----	387.4ML
Ignition-----	DC-CDI
Shift select-----	5 gears acyclic by foot kicking ,neutral gear reverse,shaft drive
Starting-----	Electric start /hand pull start
Main clutch-----	ungula acentric automatic-clutch
Auxiliary clutch-----	clumpy drive clutch
Standard power-----	16KW(6000r/min –7000r/min)
Max Power-----	17KW(6000r/min –7000r/min)
Max Torque-----	26.N.m (5500r/min-6500r/min)
The low fuel consume -----	≤354g/kw.h
The slow idle speed -----	1500r/min
Compression rate-----	8.6:1
Transmission rate-----	primary 3.167, the first gear 3.333; the second gear 1.889; the third gear 1.364; the fourth gear 0.962;the fifth gear 0.704.
Fuel-----	Unleaded 90 –Petrol GB17930
The oil brand No-----	SE15W/30-GB11121(-25℃—0℃) SE10W/30-GB11121(-10℃—35℃) SE15W/40-GB11121(-15℃—40℃)



# OPERATION

## A. Operation controls

**WARNING** – Do not attempt to start or operate the engine until completely familiar with the location and use of each control necessary to operate this vehicle. The operator must know how to stop this machine before starting and driving it.

### a. Throttle

The right foot pedal is the throttle that controls the Kart speed. As the engine speed increased above idle, the clutch automatically engages and moves the vehicle forward. To disengage the clutch at any time, allow the throttle to return to the idle position. (See Fig.1)

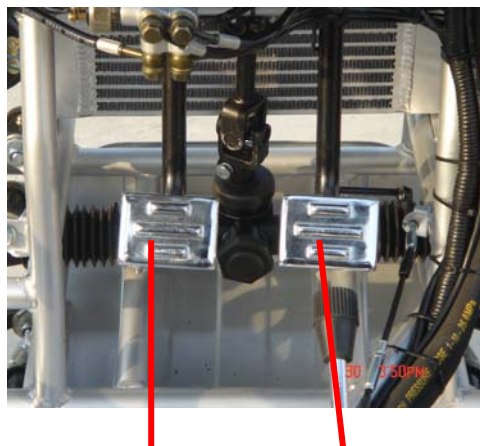


### WARNING

Each time prior to starting the engine, check the throttle assembly to ensure that when the pedal is pushed all the way forward the assembly is working smoothly and returns to idle when released. Do not operate if pedal or engines throttle linkage fail to return to idle. If unable to correct the problem through lubrication, adjustment or replacement of worn parts, contact your dealer for assistance.

### b. Brake

The brake is located on the left side of the kart (See Fig.1). Applying pressure to the pedal draws the brake caliper around the brake disc at the rear wheel and slows or stops the kart.



Brake pedal

Throttle pedal

### c. Start engine

Insert the key into key-switch, turn the key clockwise, and release the key when the engine starts. The engine will warm up within 5 minutes and the engine choke will close automatically and operate at the normal RPM (Warning: Don't



crank starter more than 5 seconds at one time).

#### **d. Engine stop button**

Important-stop button test.

Before driving this vehicle, test the Engine Stop Button to assure that it is operating properly. With the engine running, push and hold the Engine Stop Button for two seconds for the engine to shut down.

## **OPERATION**

### **B. Pre-Drive Inspection**



#### **WARNING**

**Perform this pre-drive inspection everyday before driving vehicle. If not performed, serious damage to the vehicle or personal injury may result.**

- a. Check for Engine Oil Level. Check for leaks, add oil if required.
- b. Check for Fuel Level. Add fuel as necessary and do not overfill. Check for leaks.
- c. Check for Brakes. Depress the rear brake pedal several times, and then check for proper brake pedal free play. Make sure there is no brake fluid leakage. Adjust if necessary.
- d. Check Tires. Check tires condition and pressure. The pressure on both Front and Rear tire is 5 and 8 lbs respectively.
- e. Check Drive Chain. Check for drive chain's condition and tension. Lubricate if necessary.
- f. Check Throttle. Check for smooth operation. Assure throttle "snaps" backed to idle.
- g. Check Engine Stop Button. Perform engine stop button test. Repair as necessary.
- h. Check all Nuts, Bolts, and fasteners. Check wheels to see that all axle nuts and lug nuts are tightened properly. Check and tighten as necessary all other fasteners to specified condition.
- i. Check Roll cage bar, Ensure all protective roll cage bars are in place before operating the Kart.
- j. Check Brake Light. Check for proper operation.
- k. Check Wheels. Check for tightness of wheel nuts and axle nuts; check that axle nuts are secured by cotter pins.
- l. Check Steering. Check for free operation for any unusual looseness in any area.
- m. Check seats belts, Always make sure your seat belts are fastened and that the latch is

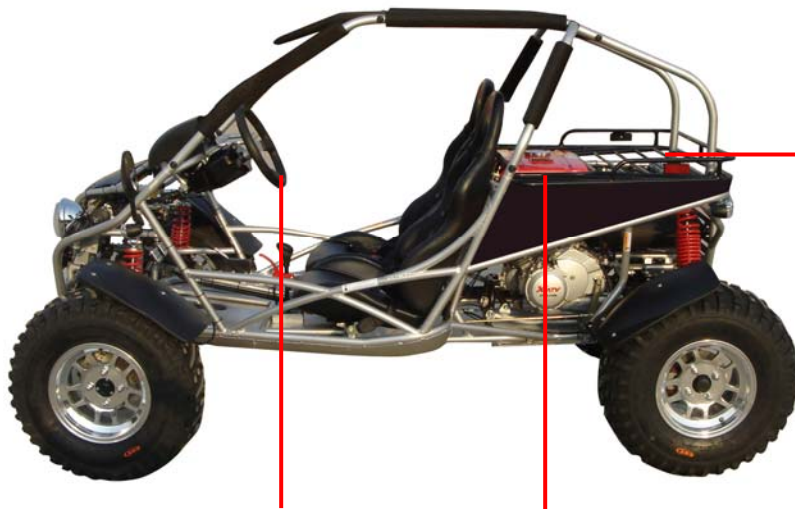
working.



**CAUTION**

Always follow rules for safe operation and wear a helmet.

## Component location



**Steering wheel**

**Fuel tank**

**Rear rack**



**lights**

**Engine**





## OPERATION

### C. Passengers

The vehicle allows for two riders only. Combine maximum Weight of driver and the passenger should not exceed 180kg or 400lbs.



### D. Seat Adjustment

**The seat must always be securely fastened in the position which best affords the operator control of the foot pedals, steering wheel, and the emergency stop button.**

- Pull seat adjustment handle upward to disengage seat slide.
- Move seat to desired position.
- Be sure seat adjustment handle snaps back into place and that seat is locked into position.

**⚠ WARNING**

Before attempting to adjust the seat, ensure that kart engine is stopped.

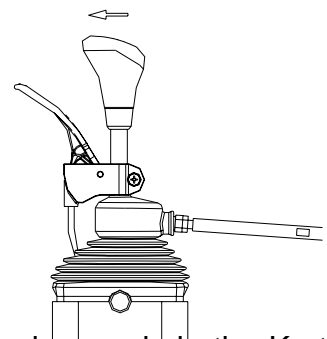
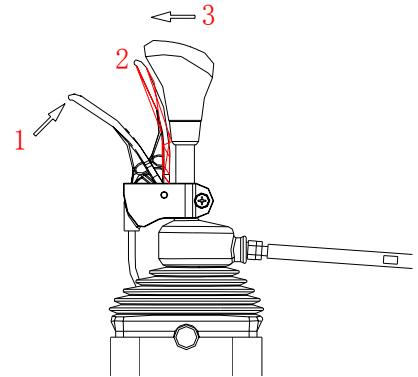
**⚠ WARNING**

Never operate this Kart when the provided seat is not securely fastened, to do so could result in a strong possibility of severe personal injury or loss of life. Before attempting to adjust the seat, ensure the kart engine is stopped.

**E. Reverse Adjustment**

- a. Pull backwards the reverse lever from **1** to position **2** ( to the red broken line)and then grasp the lever and handgrip together push forward as the **3** arrowhead indicated, the unit can move backward. (see fig.4)
  
- b .push forward the handgrip from grasp as the arrowhead indicated, the unit can move forward. this unit have five different forward gears speed .

**Always stop the kart before changing gears.**



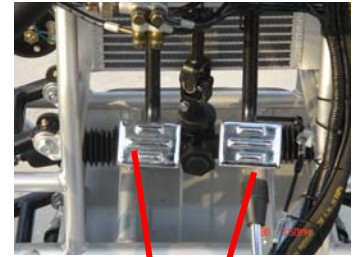
**OPERATION/SERVICE INSTRUCTIONS**

**F. Starting And Operation Instructions**

- a. Before starting the engine, be sure that the driver is seated properly in the Kart with the seat belt.
  
- b. Testing the Kart in an open space at the beginning to learn how to start, turn and stop.
  
- c. Operate the Kart slowly until you are familiar with it.

d. The turning radius of this Kart is small and agile, so the centrifugal force is very high when turning at high speed. Slow down to a more controllable speed when turning to prevent the Kart from rolling over.

e. To prevent vehicle from rolling over, be sure to only turn the vehicle at a slow controllable speed. Keep your heel on the ramp of the floor board when turning.(see fig5)  
This will help to maintain foot position on the pedals to help maintain your balance and control of the kart.



**Position for heel**

## **SERVICE INSTRUCTIONS**

### **A. Service Air Cleaner**

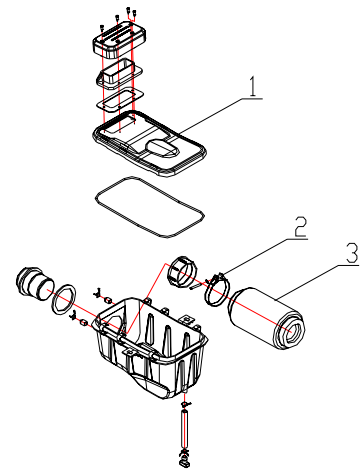
Service air cleaner every 20 hours.

NOTE: Service more often under dusty conditions.

a. Remove cleaner cover ( 1 ).

b. Remove air cleaner element 2 and 3 .

c. Shake the filter allowing dirt and debris to fall away. Use an air spray gun to help remove dirt from the filter. The filter may also be cleaned with a non flammable spray cleaner. If a spray cleaner is used, make sure that the filter is allowed to dry completely before you reinstall it into the air cleaner housing.



d. Use a light coating of multi purpose oil on the air cleaned element to help it perform efficiently.



# SERVICE INSTRUCTIONS

## B. Engine Lubrication

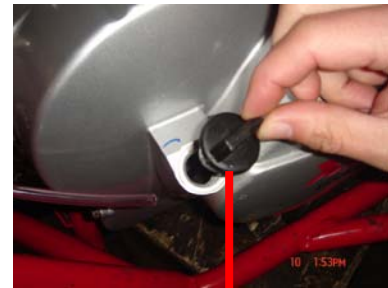
You must change the oil in the crankcase after the first 5 hours of operating of your new engine (see Fig.7) and after 10 hours of use thereafter. That will insure proper lubrication of internal parts and prevent costly repairs due to excessive wear.



**WARNING**

**Used Oil Must Be disposed of at a proper collection Center.**

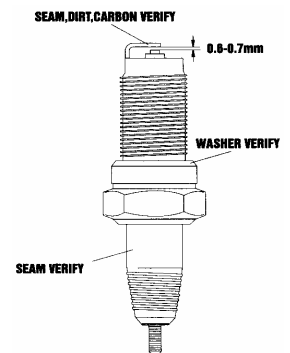
- Remove drain plug located on the right rear side of engine. Tip kart backwards slightly by blocking up the front end and drain oil into suitable container.
- Remove and clean Oil Screen.
- Replace drain plug and tighten securely. Place kart in a level position.
- Refill crankcase (approximately 1 1/4 pint) to top of filler neck with SAE 10W40 oil. Use same grade of oil as used originally.
- Check oil level before each use of kart or after each 10 hours of operation. Add oil to bring up to proper level. Do not mix various grades of oil.



**Engine oil plug ,cover**

## C. Spark Plug

- Remove the spark plug and inspect it each time you change the oil.(Use a spark plug wrench) The electrodes should be kept clean and free of carbon. The presence of carbon or excess oil will greatly reduce engine performance. If possible, check the spark plug gap (area between electrodes) using a wire feeler gauge. This specification is 0.6~0.7mm. (.024-.028 inch)
- Before installing spark plug coat threads lightly with graphite grease if possible, to ensure easy removal next time the spark plug needs inspection.
- It is advisable to replace the spark plug at least once a year to insure easy starting and good engine performance.



**Figure 8**

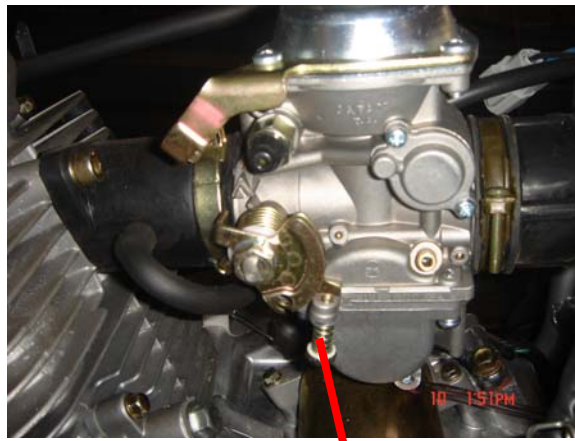
## D. Carburetor Adjustment

Never make unnecessary adjustments. The factory recommended settings are correct for most applications.



## SERVICE INSTRUCTIONS

- a. Warm up the engine (5~10min)
- b. Tighten the airscrew gently. Back out 2-3/8 turns counter clockwise.
- c. Connect the tachometer; adjust the throttle to limit the idle speed. The standard value is **(1500RPM)**.
- d. Turn the airscrew counter clockwise slowly and observe the RPM of the engine, stop adjusting as the RPM reaches the top speed.
- e. Adjust the screw and adjust the idle speed to an ideal value.
- f. Recheck and readjust the idle speed if necessary.



**Screw A**

### **E. Cleaning Instructions**

Keep your Kart clean. With a clean rag, wipe off dirt and oil from around controls. Wipe off any spilled fuel and oil. Keep the engine clean of foreign objects, and be sure to check that air intake fan is free of debris for proper cooling.

### **F. Kart Lubrication**

Lubricate vehicle every 90 days of use. Lubrication should be done sooner, if kart is used everyday.

# SERVICE INSTRUCTIONS

## I. Adjustment of Front And Rear Shock

There are five adjustable positions on each shock. The default position is in the middle set by manufacturer.

Use a spanner wrench to adjust the shock. The tension of shock spring will increase as you screw to left, decrease as you screw to right. Adjust according to the weight of the riders.



**SPRING ADJUSTING CAM**

## J. Storage Instruction

In the event your kart is not to be operated for a period in excess of 30 days or at the end of each driving season prepare for storage as follows:

- a. Drain fuel tank and carburetor by allowing engine to run out of fuel, or use a fuel stabilizer.
- b. Lubricate engine cylinder by removing the air cleaner, then spray engine fogging oil through the carburetor until motor dies.
- c. Do not save or store gasoline over winter. Using old gasoline, which has deteriorated from storage, will cause hard starting and affect engine performance.

 **WARNING**

**Do not drain fuel while engine is hot. Move Kart outside before draining fuel.**

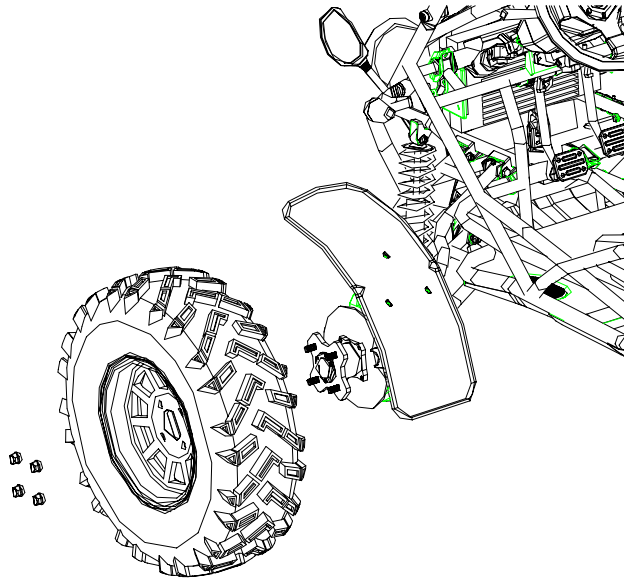


## A. Front Wheel Replacement

**Do not disassemble the castle nuts when you replace the front wheels.**

It is only necessary to remove the 4 lug nuts to remove the wheel.(see Fig.12)

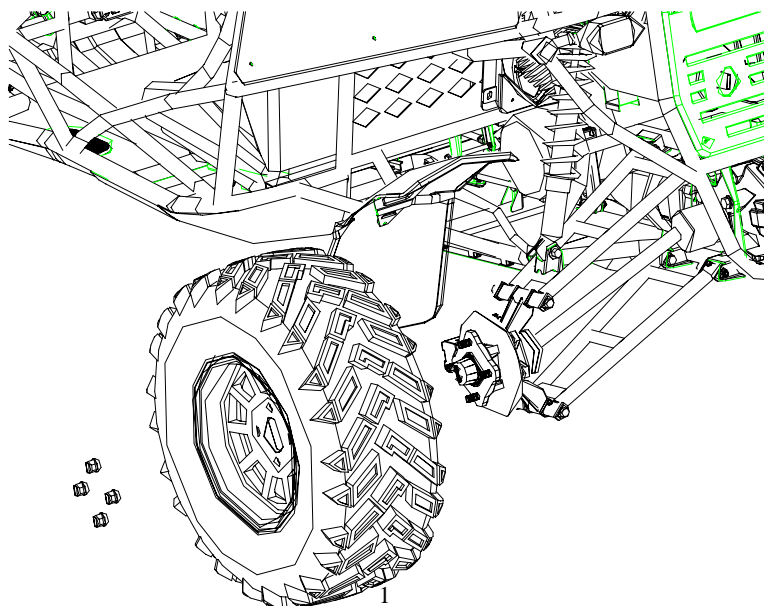
Tighten the nuts after replacing the wheels.



## B. Rear Wheel Replacement

**Do not disassemble the castle nuts when you replace the rear wheels and hub assembly.**

It is only necessary to remove the 4 lug nuts to remove the wheel by itself. (See Fig.13)



- a. should be  $1/8''$ - $1/4''$  greater than dimension B.
  
- b. To adjust the alignments, loosen the lock nuts on both sides of Front Tie Rods. To make Dimension B smaller, turn the rod to left. Adjust the rod to right direction to make Dimension B larger. After adjusting to the desired length, tighten the lock nut against the rod end. Recheck the dimensions for proper alignment.



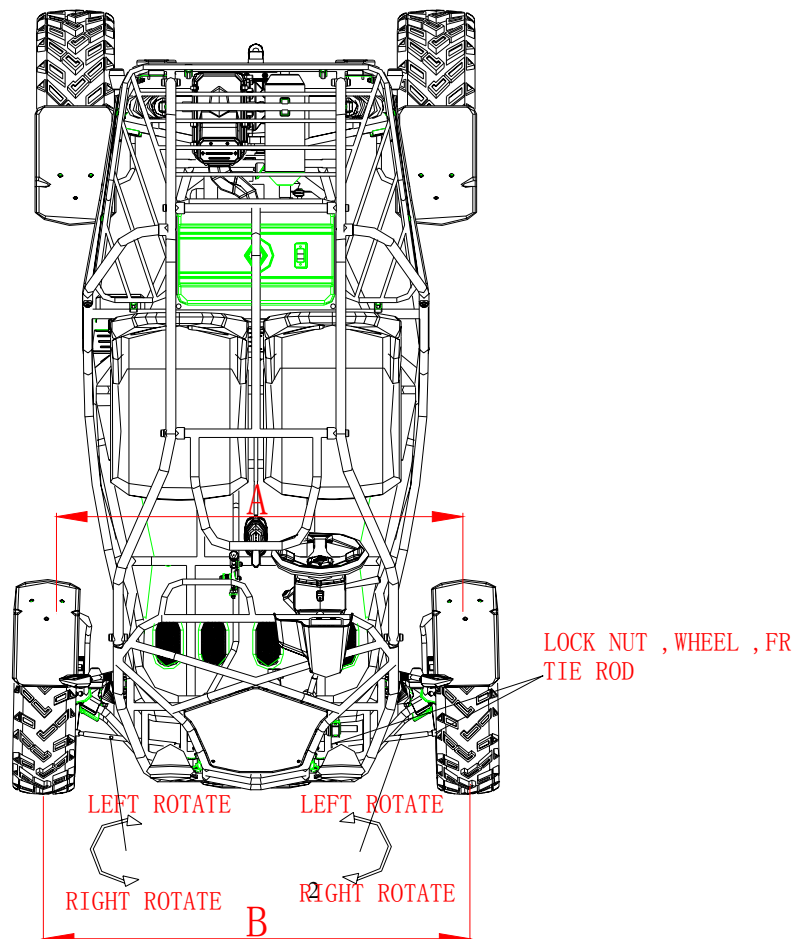




# REPAIR

## A. Front Wheel Alignment

- a. The front wheels should be “toe-in” from 1/8” to 1/4”. To check for alignment, measure distance A and B between the centerline (CL) of the wheels. The proper toe-in dimension A should be 1/8”-1/4” greater than dimension B.
  
- b. To adjust the alignments, loosen the lock nuts on both sides of Front Tie Rods. To make Dimension B smaller, turn the rod to left. Adjust the rod to right direction to make Dimension B larger. After adjusting to the desired length, tighten the lock nut against the rod end. Recheck the dimensions for proper alignment.





## PERIODICAL CHECK AND SERVICES

The maintenance intervals in the following table are based upon average driving conditions.

Driving in unusually dusty areas, require more frequent servicing:

Time of service Items	Initial service (First week)	Monthly	Quarterly	Yearly
Tire pressure/wear	I	I		
Brake performance	I	I		
Tightness of screws	I	I		
Air cleaner		C		R
Carburetor	I			C
Spark plug			C, A	
Brake oil	I	I	I	
Replace gearbox oil		I	R	
chassis	I	C, I	L	
Fuel switch/fuel tank		I		C
Battery			I	
Valve clearance of engine			A	

**A:** adjust **C:** clean **I:** inspect, clean or replace if necessary **L:** lubricate **R:** replace



