



# PARTS LIST and SCHEMATICS

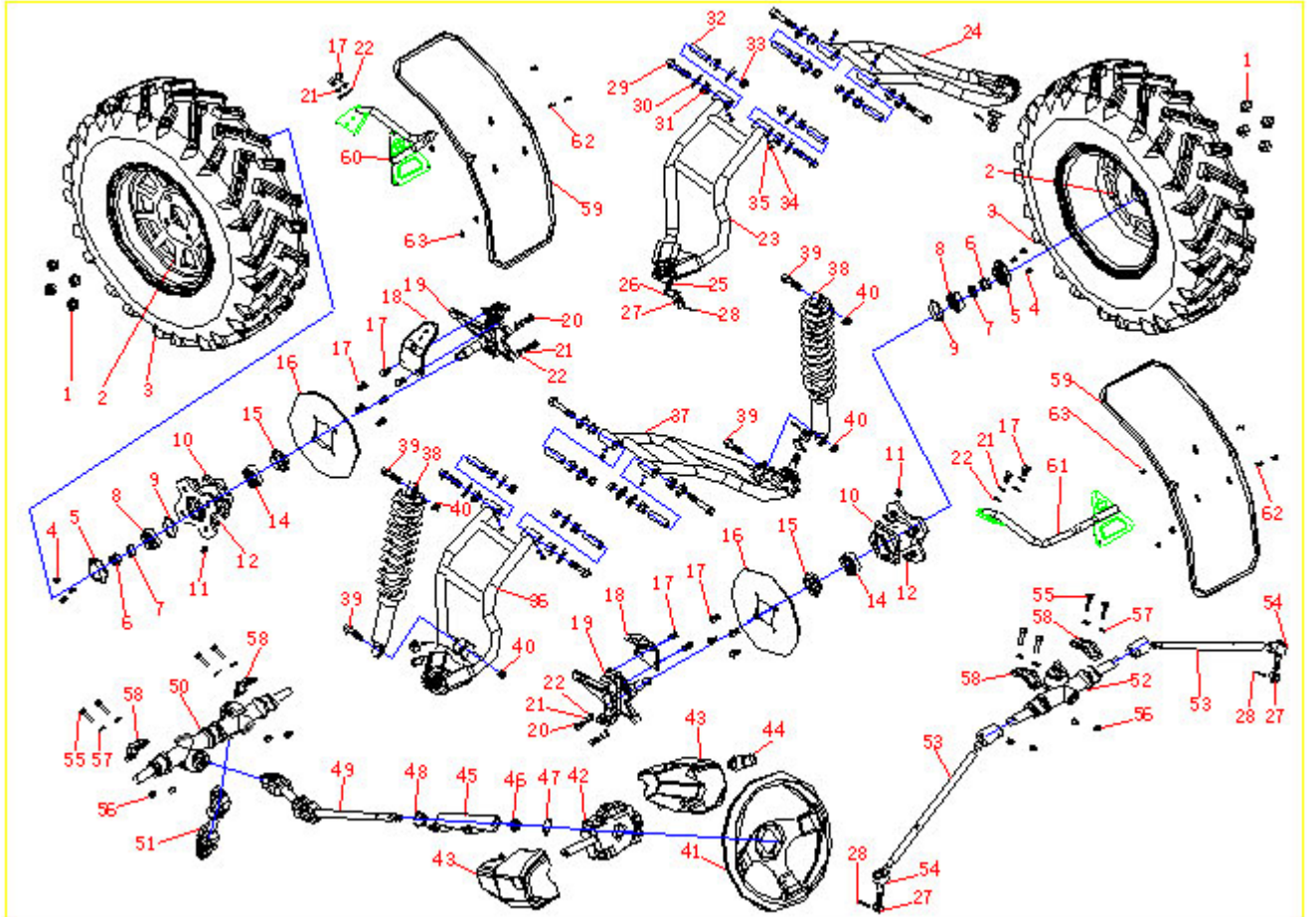
## 400cc DUNE BUGGY



目 录  
TABLE OF CONTENTS

图号 CHAPTER	名 称	DESCRIPTION	页号 PAGE NUMBER
1	前悬架总成	FRONT SUSPENSION ASSY	3
2	后悬架总成	REAR SUSPENSION ASSY	6
3	车架、后货架总成	FRAME AND REAR RACK ASSY	9
4	刹车系统总成	BRAKING SYSTEM	11
5	转向系统总成	STEERING ASSY	13
6	发动机总成	ENGINE ASSY	15
7	减速器总成	TRANSMISSION BOX ASSY	19
8	电器总成	ELECTRIC ELEMENT ASSY	21
9	汽缸盖总成	CYLINDER HEAD ASSY	23
10	配气结构	VALVE ASSY	25
11	曲柄连杆机构	CRANK CONNECT ROD MECHANISM	27
12	曲轴箱总成	CRANKCASE BODY PART	29
13	离合器	CLUTCH	31
14	操纵、换挡凸轮、 拨叉机构	CONTROL SHIFT CAM MECHANISM	33
15	变速齿轮机构	GEAR MECHANISM	35
16	输出机构	OUTPUT SHAFT ASSY	38
17	润滑冷却机构	OIL COOLING MECHANISM	40
18	排气系统	EXHAUST SYSTEM	42
19	进气系统	INTAKE SYSTEM	44
20	手起动装置	PULL STARTER	46
21	电起动装置	STARTER MOTOR MECHANISM	48

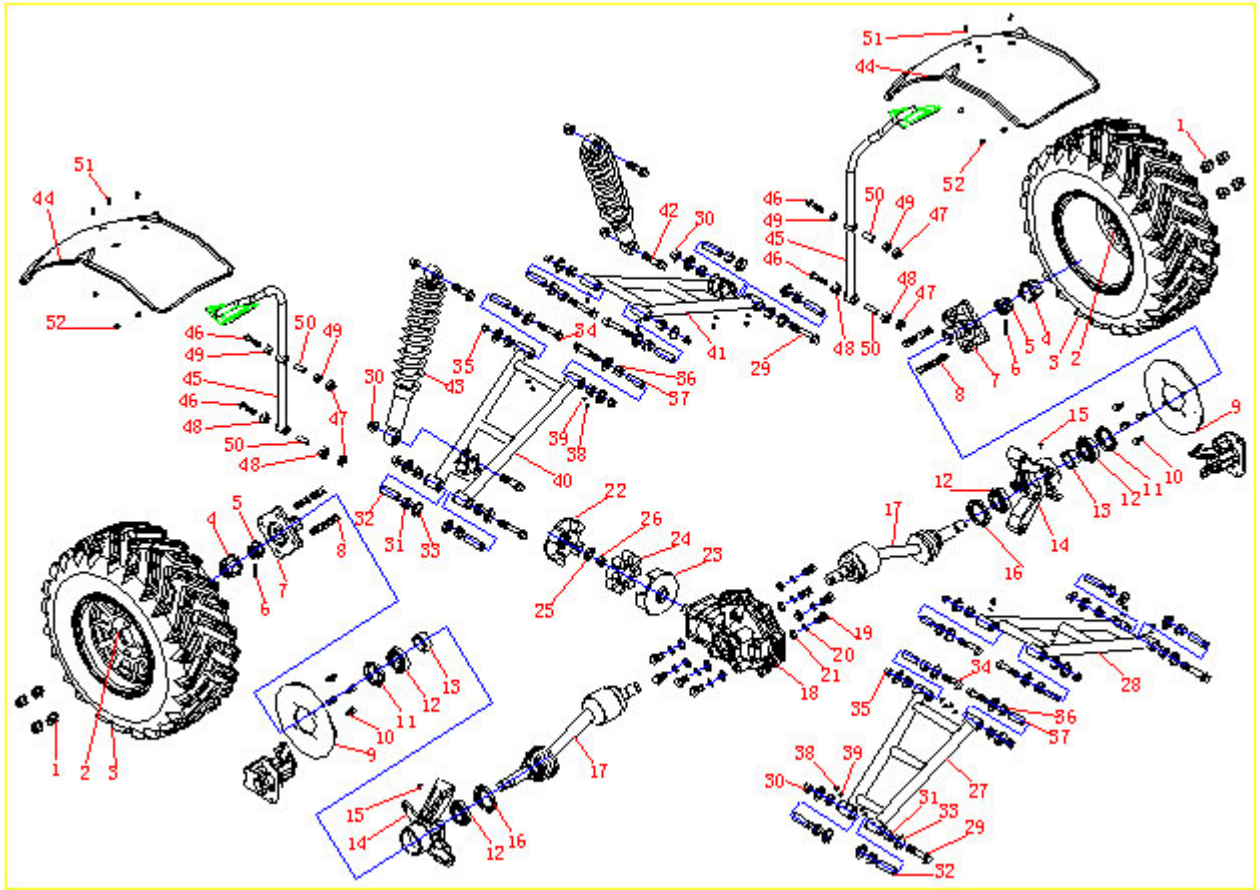
前悬架转向系统 PART 1: THE FRONT SUSPENSION SYSTEM



(一)前悬架总成 PART 1: THE FRONT SUSPENSION ASSY					
REF NO.	PART NO.	CHINESE	ENGLISH	REGD NO.	Unit price
1	A0211.ZLM12*1.25	M10x1.25金属自锁螺母	NUT M10x1.25	8	
2	260L00295	前轮毂	FRONT WHEEL RIM	2	
3	260L00303	前轮胎	FRONT TIRE	2	
4	SLM5*10	M5x12十字盘头螺钉	SREW M5*12	6	
5	260L00257	防尘盖	DUSTPROOF COVER	2	
6	KLM16*1.5	M16x1.5开槽螺母	CASTLE NUT M16*1.5	2	
7	A021108.01J	隔圈	SPACER	2	
8	ZC30204	圆锥滚子轴承30204	BEARING30204	2	
9	YF45*2.65	O形圈 45x1.8	O RING 45*1.8	2	
10	A021108.07Z.01F	前轮法兰	FRONT WHEEL HUB	2	
11	YZM8	油嘴M8x1	OIL NIB M8*1	2	
12	HLM12*1.25*35	M12x1.25x35花键螺栓	SPLINE BOLT M12*1.25*35	8	
13					
14	ZC30205	圆锥滚子轴承30205	BEARING 30205	2	
15	YF35*55*8	FB油封35-55-8	OIL SEAL 35-55-8	2	
16		前碟刹盘	FRONT BRAKE DISC	2	
17	LM8*16	M8x16螺栓	BOLT M8*16	16	
18	K1001.00.054P	挡泥板支承板	FENDER SUPPORTING PLATE	2	
19	K100108.03Z.01FH	左转向节焊接组件	LEFT TURNING KNURL COMP	1	
20	FLM8*10	M8x20螺栓	BOLT M8*20	4	
21	TDM8	M8弹垫	SPRING WASHER M8	8	
22	PDM8	M8平垫	FLAT WASHER M8	8	
23	K100108.0301ZP	前悬架上摇臂左	FRONT UPPER ROCKER , LEFT	1	
24	K100108.0401ZP	前悬架上摇臂右	FRONT UPPER ROCKER , RIGHT	1	
25	21500035	球头组件	BALL HEAD	4	
26	ZYDQ38	%C38轴用弹性挡圈	CIRCLIP φ 38	4	
27	KLM12*1.25	M12x1.25-1型开槽螺母	CASTLE NUT M12x1.25-1	5	
28	KKX3*30	3x22开口销	COTTER PIN3*22	5	
29	FLM10*1.25*75	M10x1.25x75六角法兰面螺栓	FLANGE BOLT M10*1.25*75	8	
30	260L00257	%c10油封组件	OIL SEAL φ 10	16	
31	260L00027	%C15轴套	SPINDLE COVER φ 15	16	
32	A0211.10.001	%C15衬管	PIPE φ 15	8	

33	NZM10*1.25	M10x1.25六角法兰面金属自锁螺母	LOCK NUT M10x1.25	12	
34	YZM6	油嘴M6	OIL NIB M6	8	
35	TAM6	M6弹垫	SPRING WASHER M6	8	
36	K100108.0101ZP	前悬架下摇臂左	FRONT LOWER ROCKER , LEFT	1	
37	K100108.0201ZP	前悬架下摇臂右	FRONT LOWER ROCKER , RIGHT	1	
38	K1001.00.019	前减震器	FRONT SHOCK ABSORBER	2	
39	FLM10*1.25*40	M10x1.25x40六角法兰面螺栓	FLANGE BOLT M10*1.25	4	
40	NZM10*1.25	M10x1.25六角法兰面金属自锁螺母	LOCK NUT M10*1.25	12	
41	K1001.00.003	方向盘组件	STEERING WHEEL	1	
42	K1001.00.015	转向提示机构/组合开关	STEERING MACHINE	1	
43	K1001.00.015	转向提示机构盖/组合开关罩	STEERING MACHINE COVER	1	
44	K1001.00.031	点火开关	IGNITION SWITCH	1	
45	K100109.0101ZP	转向杆套焊接组件	STEERING STAFF WELDING UNIT	1	
46	ZC61903-2Z	深沟球轴承61903	BEARING61903	1	
47	ZYDQ17	%%C17轴用弹性挡圈	CIRCLIP	1	
48	K100109.01Z.01S	转向杆轴套	STEERING STAFF COVER	1	
49	K100109.0102Z	上连接轴组件	UPPER CONNECTING SHAFT	1	
50	K100109.04Z	双头转向机	DOUBLE HEAD STEERING MACHINE	1	
51	K100109.03Z	下连接轴组件	LOWER CONNECTING SHAFT	1	
52	K100109.05Z	单头转向机	SINGLE HEAD STEERING MACHINE	1	
53	K1001.00.108	连接杆	CONNECTING STAFF	2	
54	ZC.ZS87-7/ZC.FS87-7	转动球窝	TURNING BALL AND SOCKET	2	
55	FLM8*30	M8x30法兰螺栓	FLANGE BOLT M8*30	8	
56	LM8	M8圆螺母	ROUND NUT M8	8	
57	PDM8	M8平垫	FLAT WASHER M8	8	
58	K10010.10P	U形卡	U CARD	4	
59	K1001.00.059	前塑料挡泥板	FRONT PLASTIC FENDER	2	
60	K100122.0101ZP	前左挡泥板支承组件	FRONT , FENDER SUPPORTING UNIT , LEFT	1	
61	K100122.0201ZP	前右挡泥板支承组件	FRONT , FENDER SUPPORTING UNIT , RIGHT	1	
62	SBLM6*16	M6x20十字槽大盘头螺钉	CROSS SCREW M6*20	6	
63	NZM6	M6尼龙自锁螺母	NYLON LOCK NUT M6	6	

二：后悬架总成 PART 2: REAR SUSPENSION ASSY



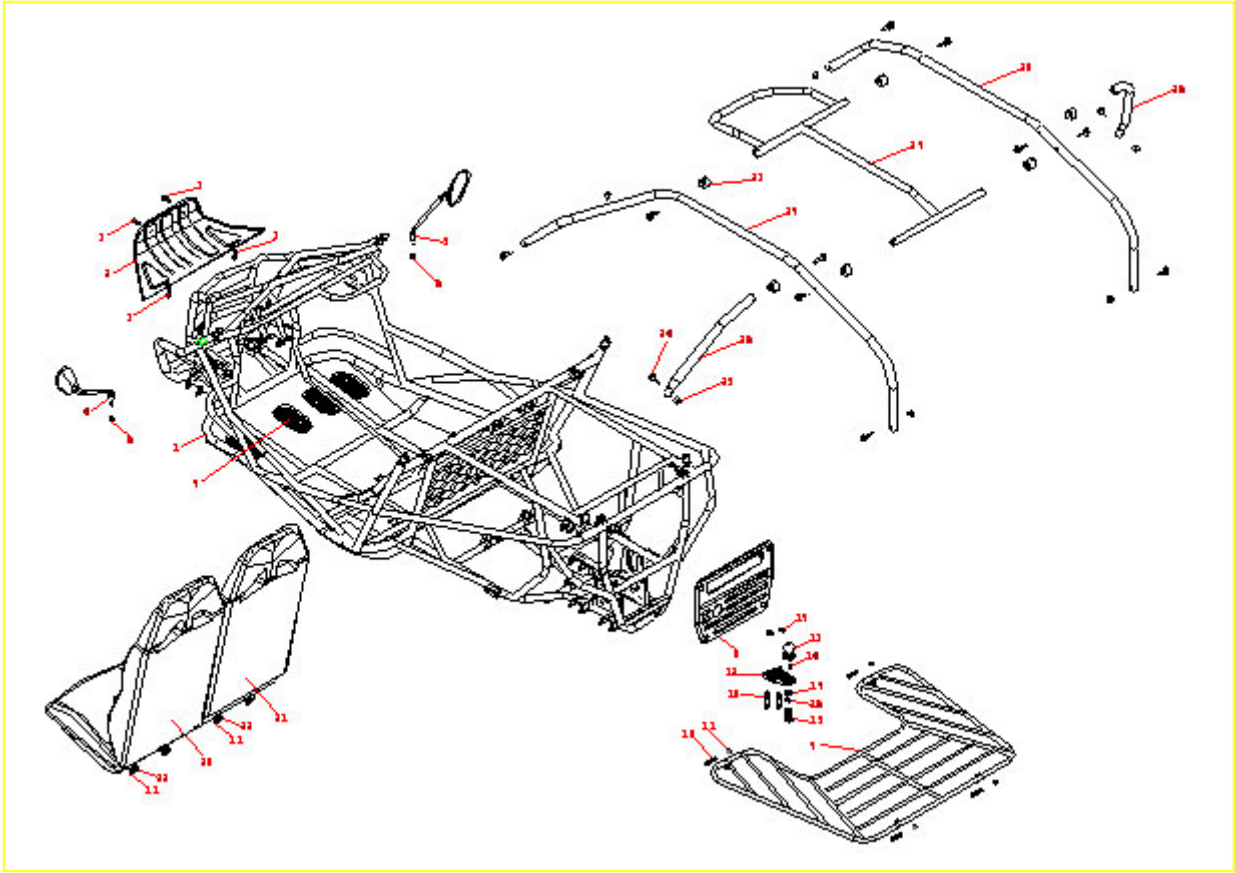
(二)后悬架总成 PART 2: THE REAR SUSPENSION ASSY					
REF NO.	PART NO.	CHINESE	ENGLISH	REGD NO.	Unit price
1	A0211.ZLM12*1.25	M10x1.25金属自锁螺母	LOCKNUT M10*1.25	8	
2	260L00296	后轮毂	REAR WHEEL RIM	2	
3	260L00304	后轮胎	REAR TIRE	2	
4	21500022	橡胶装饰盖	RUBBER DECORATE COVER	2	
5	KKX22*1.5	M22x1.5开槽螺母	CASTLE NUT M22x1.5	2	
6	KKX4/28	开口销 4x28	COTTER PIN 4x28	2	
7	A021110.07Z.01F	后轮法兰	REAR WHEEL HUB	2	
8	HLM12*1.25*35	M12x1.25x35花键螺栓	SPLINE BOLT M12x1.25x35	8	
9		碟刹盘	DISC BRAKE	2	
10	LM8*16	M8x16螺栓	BOLT M8x16	12	
11	YF45*62*8	油封FB 42-62-8	OIL SEAL FB 42-62-8	1	
12	6007-Z	深沟球轴承6007-Z	BEARING 6007-Z	4	
13	A0211.10.015E	%c35隔套	SPACER $\phi$ 35	2	
14	K1001.00.047	左轴承座焊接组件	BEARING HOLDER WELDING COMP	1	
15	STLM4*10	M4x10十字槽半沉头螺钉	CROSS SCREW M4x10	2	
16	YF50*68*8	油封FB 50-68-8	OIL SEAL FB 50-68-8	2	
17	K1001.00.001	YH-8001球笼	BALL CAGE YH-8001	2	
18	A0211.00.112	减速器总成	TRANSMISSION BOX	1	
19	LM12*1.75*25	M12x25螺栓	BOLT M12x25	8	
20	TDM12	M12弹垫	SPRING WASHER M12	8	
21	PDM12	M12平垫	FLAT WASHER 12	8	
22	K100107.0401Z.01F	连接发动机半联轴器	HALF SHAFT COMP FOR CONNECTING ENGIIE	1	
23	K100107.04Z.01F	连接减速器半联轴器	HALF SHAFT COMP FOR CONNECTING	1	
24	260L00216	弹性体(缓冲垫)	ELASTOMER	1	
25	A0211.00.039D	半联轴器隔圈	HALF SHAFT COMP SPACER	1	
26	KLM14*1.5	M14金属自锁螺母	LOCK NUT M14	1	
27	K100110.0101ZP	后悬架左下摇臂	REAR LOWER ROCKER ,LEFT	1	
28	K100110.0201ZP	后悬架右下摇臂	REAR LOWER ROCKER ,RIGHT	1	
29	FLM12*1.25*165	M12x1.25x168六角法兰面螺栓	FLANGE M12*1.25*168	4	
30	FLM12*1.25	M12x1.25六角法兰面金属自锁螺母	LOCK NUT M12*1.25	8	
31	A0211.00.006	$\phi$ 17轴套	AXES COVER $\phi$ 17	16	
32	A021110.01Z.02J	$\phi$ 17衬管	PIPE $\phi$ 17	8	



33	260L0003	Φ 12油封组件	OIL SEAL Φ 12	16	
34	FLM10*1.25*75	M10x1.25x75六角法兰面螺栓	FLANGE BOLT M10*1.25*75	8	
35	NZM10*1.25	M10x1.25六角法兰面金属自锁螺母	LOCK NUT M10*1.25	8	
36	260L00027	Φ 15轴套	AXES COVER Φ 15	16	
37	A0211.10.001	Φ 15衬管	PIPE Φ 15	8	
38	YZM6	油嘴M6	OIL NIB M6	16	
39	TDM6	M6弹垫	SPRING WASHER M6	16	
40	K100110.0301ZP	后悬架左上摇臂	REAR UPPER ROCKER ,LEFT	1	
41	K100110.0401ZP	后悬架右上摇臂	REAR UPPER ROCKER ,RIGHT	1	
42	LM12*50	M12x1.25x55六角法兰面螺栓	FLANGE BOLT M12*1.25*55	4	
43	K1001.00.020	后减震器总成	REAR SHOCK ABSORBER	2	
44	K1001.00.060	后塑料挡泥板	REAR PLASTIC FENDER	2	
45	K10022.0301ZP/0401ZP	后挡泥板支承组件(左右)	REAR FENDER	2	
46	LM8*45	M8x40六角法兰面螺栓	SPRING WASHER M8	2	
47	NZM8*1.25	M8尼龙自锁螺母	NYLON LOCK NUT M8	2	
48	K100317.13Z.02S	Φ 22轴套	AXES COVER Φ 22	2	
49	7.010.003	Φ 16轴套	AXES COVER Φ 16	2	
50	K100117.13Z.01J	Φ 12衬管	PIPE Φ 12	2	
51	SBLM6*16	M6x20十字槽大盘头螺钉	CROSS SCREW M6*20	6	
52	NZM6	M6尼龙自锁螺母	NYLON LOCK NUTM6	6	

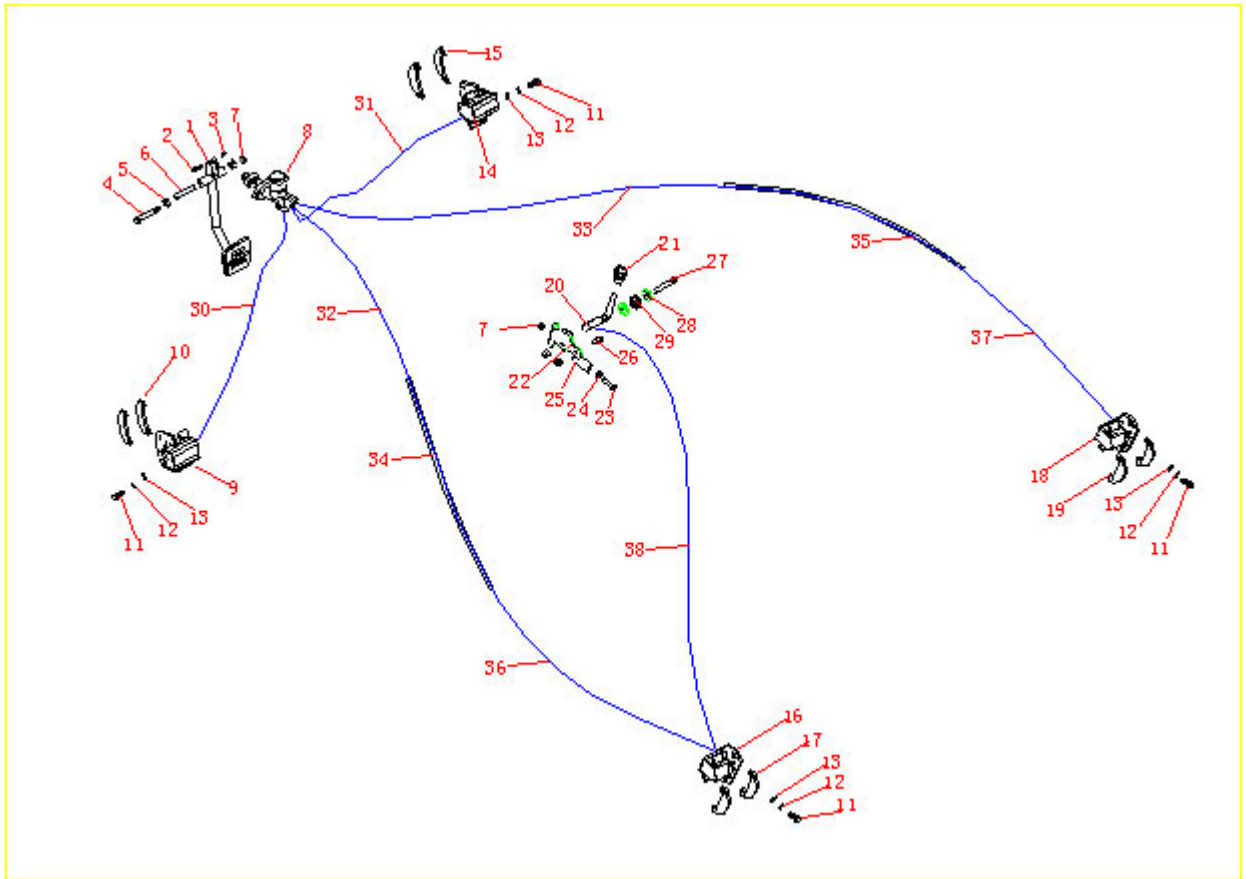


三、车架、后货架总成  
PART 3: THE FRAME AND REAR RACK ASSY



(三)车架、后货架总成 THE FRAME AND REAR RACK ASSY					
REF NO.	PART NO.	CHINESE	ENGLISH	REGD NO.	Unit price
1	K100107P	车架总成	THE FRAME ASSY	1	
2	K1001.01P	前装饰盖板	FRONT DECORATE PLATE	1	
3	LM8*16	M8X30六角法兰面螺栓	HEXAD FLANGE BOLT M8X30	4	
4	K1001.00.010Z	左后视镜	REAR VIEW MIRROR , L	1	
5	K1001.00.010Y	右后视镜	REAR VIEW MIRROR , R	1	
6	LM10*1.25	M10尼龙六角锁紧螺母	HEXAD LOCKNUT M8	2	
7	7.020.012	脚垫	FOOT PAD	4	
8	1	K100117.03Z.01P	后装饰盖板	REAR DECORATE PLATE	1
9	K100120P	后货架组件	REAR RACK ASSY	1	
10	LM8*35	M8x35螺杆	BOLT M8*35	4	
11	NZM8*1.25	M8六角锁紧螺母	HEXAD COLUMN BOLT M18X40	12	
12	A0211.00.014F	拉沟	HITCH HOOK	1	
13	A021130.01Z	拖球	HITCH TOWER	1	
14	YZX6*10	Φ6x10轴销	AXLE PIN Φ6x10	1	
15	LM18*40	M18X40螺杆	BOLT M18*40	1	
16	TDM18	M18弹垫	SPRING WASHER M18	1	
17	PDM18	M18平垫	FLATWASHER M18	1	
18	FLM10*1.25*55	M10x1.25x55六角法兰面螺栓	FLANGE BOLT M10*1.25*55	2	
19	FLM10*1.25	M10x1.25六角法兰面金属自锁螺母	LOCK NUT M10*1.25	2	
20	K1001.00.040X	左座椅	LEFT SEAT	1	
21	K1001.00.040X	右座椅	RIGHT SEAT	1	
22	LM8*20	M8x20螺杆	BOLT M8*20	8	
23	21500115	Φ32管接头	CUSTOM BAR CAGE CAP Φ32	6	
24	7.010.049	M8垫圈(配Φ32管)	WASHER M8 MATCH Φ32 PIPE	12	
25	7.010.050	M8螺母(配Φ32管)	NUT M8 MATCH Φ32 PIPE	6	
26	K100119.03P	蓬架支撑管	CUSTOM CROSS BAR	2	
27	K100119.01GP	蓬架左主管	CUSTOM BAR CAGE. , L	1	
28	K100119.02GP	蓬架右主管	CUSTOM BAR CAGE. , R	1	
29	K100119.01ZP	工字杆总成	CUSTOM CROSS BAR TOP	1	
30					

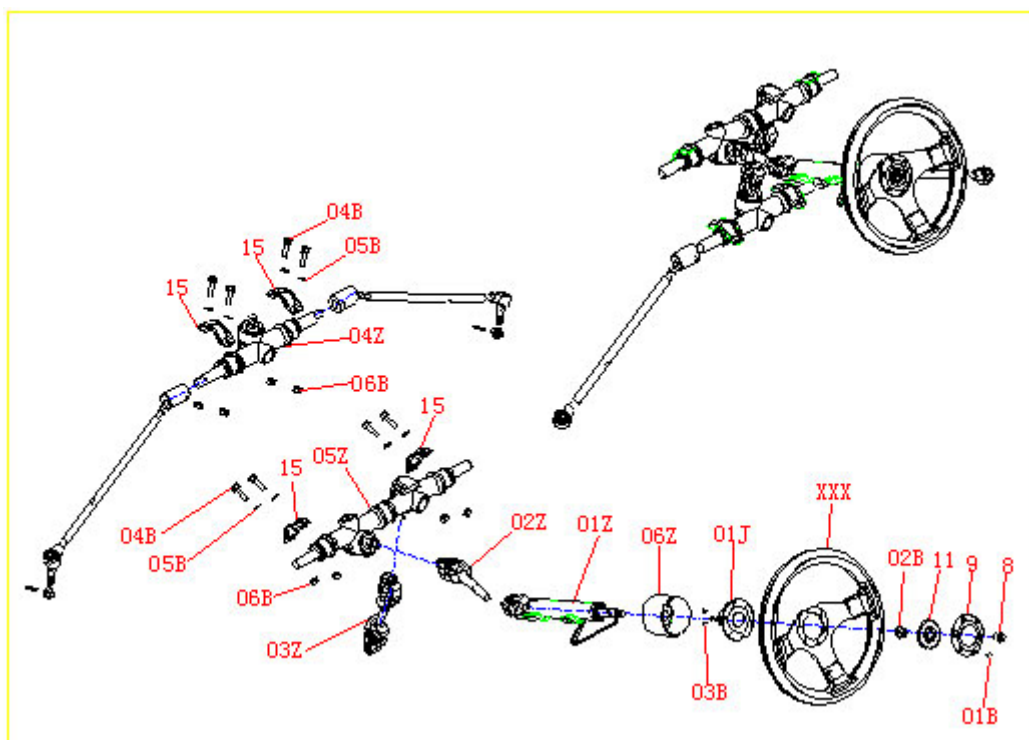
四 刹车系统总成  
PART 4: THE BRAKING SYSTEM



**( 四 ) 刹车系统总成 Part 4: THE BRAKING SYSTEM**

REF NO.	PART NO.	CHINESE	ENGLISH	REGD NO.	Unit price
1		刹车踏板焊接组件	BRAKE PEDAL JOINTING COMP	1	
2	K100115.0201ZP	M6x30螺杆	BOLT M6*30	1	
3	LM6*30	M6六角锁紧螺母	LOCK NUT M6	1	
4	NZM6	M8x105螺杆	BOLT M8*105	1	
5	FLM8*105	Φ 12轴套	AXES COVER Φ 12	2	
6	7.010.003	Φ 8套管	PIPE Φ 8	1	
7	8.010.015	M8六角锁紧螺母	LOCK NUT M8	4	
8	NZM8*1.25	刹车泵体	BRAKE PUMP	1	
9		前左碟刹钳体	CALIPER ASSY, F, L	1	
10		前左轮刹车片	BRAKE PAD, F, L	2	
11	FLM6*25	M6x25法兰螺栓	FLANGE M6*25		
12	PDM6	M6平垫	FLATWASHER M6		
13	TDM6	M6弹垫	SPRINGWASHER M6		
14		前右碟刹钳体	CALIPER ASSY, F, R	1	
15		前右轮刹车片	BRAKE PAD, F, R	2	
16		后左轮碟刹钳体	CALIPER ASSY, R, L	1	
17		后左轮刹车片	BRAKE PAD, R, L	2	
18		后右轮碟刹钳体	CALIPER ASSY, R, R	1	
19		后右轮刹车片	BRAKE PAD, R, R	2	
20	21500074	停车助动手柄焊接组件	PARKING HANDLE JOINTING COMP		
21	21500074	停车助动手柄橡胶套总成(黑色)	PARKING HANDLE RUBBER COVER		
22	21500074	停车助动固定座	PARKING HOLDER	1	
23	LM8*30	M8x30螺杆	BOLT M8*30	1	
24	7.020.012	踏脚橡胶垫	FEET RUBBER PAD	1	
25	21500074 倒档手柄带	Φ 8x40套管	PIPE Φ 8x40	1	
26	LM8*20	M8X20六角螺栓	BOLT08*20	1	
27	LM8*60	M8x60螺杆	BOLT M8*60	1	
28	21500074 倒档手柄带	弹簧压盖	SPRING CAP	2	
29	K1001.00.058	弹簧	SPRING	1	
30		前左轮刹车线(1300mm)	BRAKE HOSE, F, L(1300mm)	1	
31		前右轮刹车线(1300mm)	BRAKE HOSE, F, R(1300mm)	1	
32		后左轮前端刹车线(700mm)	BRAKE HOSE, R, L(700mm)	1	
33		后右轮前端刹车线(700mm)	BRAKE HOSE, R, R(700mm)	1	
34		后左轮中间铜管(1000mm)	BRAKE CUPRUM PIPE R.L( 1000MM )	1	
35		后右轮中间铜管(1000mm)	BRAKE CUPRUM PIPE, RR(1000MM )	1	
36		后左轮后端刹车线(1250mm)	BRAKE HOSE, R, L(1250mm)	1	
37		后右轮后端刹车线(1250mm)	BRAKE HOSE, R, R(1250mm)	1	
38	K1001.00.007	停车助动线	PARKING CABLE	1	

五：转向系统  
PART 5: THE STEERING SYSTEM

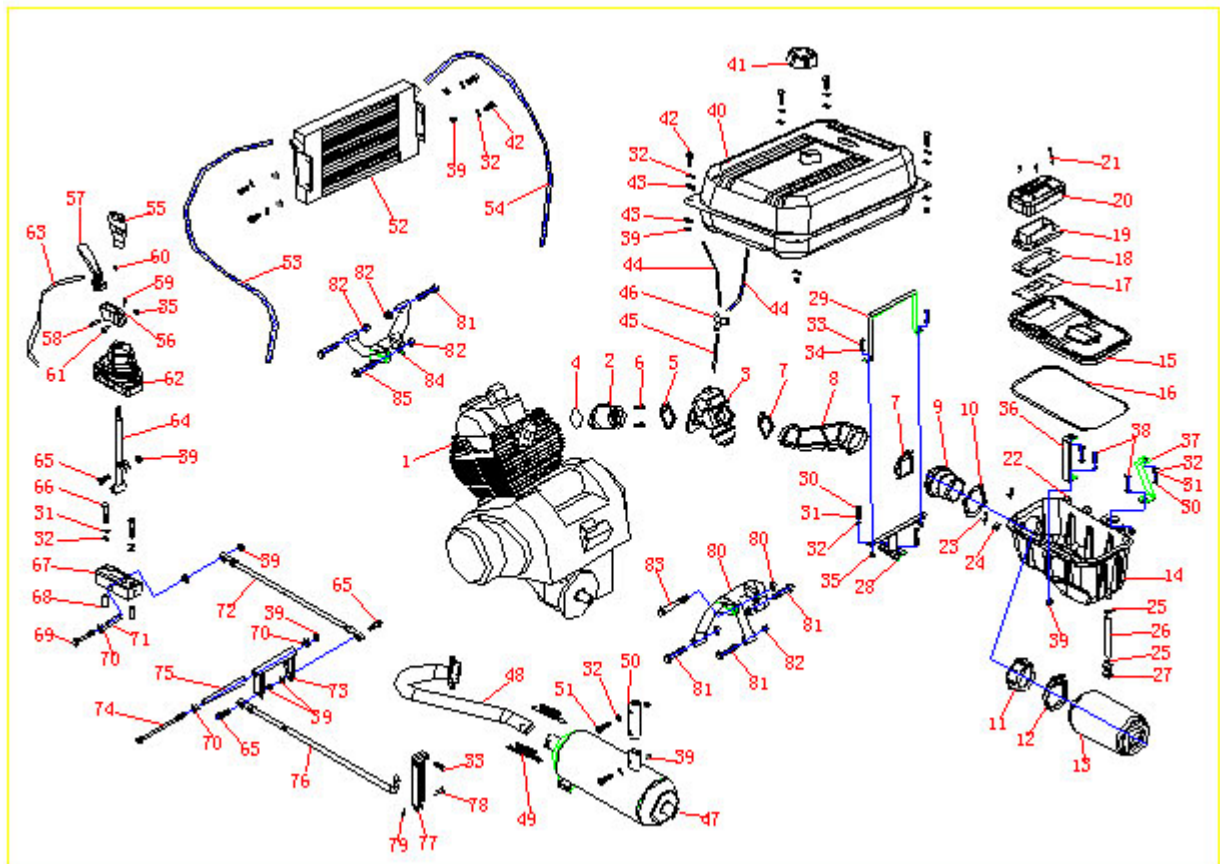


(五)转向系统总成 PART 5: THE STEERING ASSY

REF NO.	PART NO.	CHINESE	ENGLISH	REGD NO.	Unit price
01Z	K100109.0102Z	转向杆总成	STEERING STAFF ASSY	1	
02Z	K100109-02Z	上端万向节	UPPER UNIVERSAL COUPLING	1	
03Z	K100109.03Z	下端万向节	LOWER UNIVERSAL COUPLING	1	
04Z	K100109.04Z	双头方向机	DOUBLE HEAD STEERING MACHINE	1	
05Z	K100109.05Z	单头方向机	SINGLE HEAD STEERING MACHINE	1	
06Z	K100109.06Z.01C	喇叭旋转接通组件	HORN CONNECTING COMP	1	
01J	K100101.01.02D	方向盘固定座	STEERING WHEEL HOLDER	1	
	K1001.00.031	喇叭开关按钮	HORN BUTTON	1	
01B	SLM6*12	M6x12螺栓	BOLT M6*12	6	
02B	LM12	M12六角法兰面螺母	FLANGE NUT M12	1	
	K1001.00.003	方向盘	STEERING WHEEL	1	
03B	SLM4*10	M4x10螺栓	BOLT M4*10	3	
	K10011010P	U形卡	U CARD	4	
04B	FLM8*30	M8x30法兰螺栓	FLANGE BOLT M8*30	8	
05B	PDM8	M8平垫	FLATWASHER M8	8	
06B	NZM8*1.25	M8六角法兰面螺母	FLANGE NUT M8	8	

## PART 6: THE ENGINE SYSTEM

### 六、发动机系统





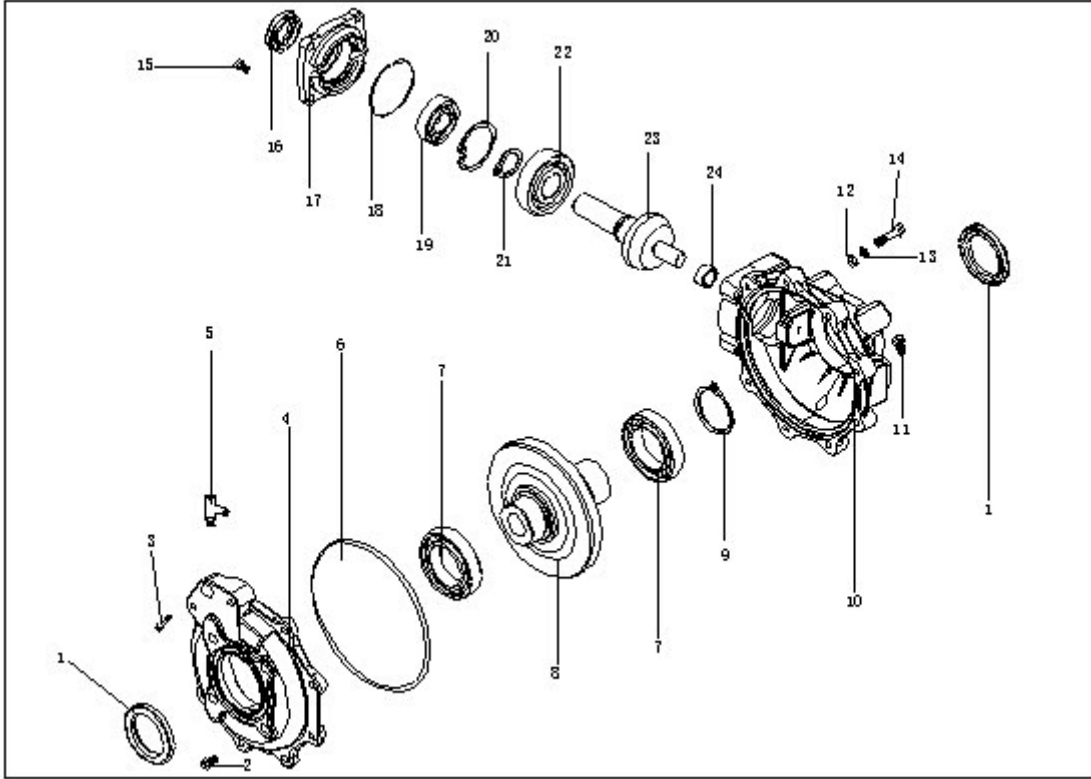
**(六) 发动机系统 PART 6: THE ENGINE SYSTEM**

REF NO.	PART NO.	CHINESE	ENGLISH	REGD NO.	Unit price
1	JS183FMQ.M	发动机	ENGINE	1	
2		发动机喉管	ENGINE THROAT PIPE	1	
3	2 A040114.00.015	化油器	CARBURETOR	1	
4	5	O形环	O RING	1	
5		喉管管夹组合	THROAT PIPE CLIP	1	
6		M8x25内六角螺杆	BOLT M8*25	2	
7	5 KG51-70	空滤器接管管夹	AIR CLEANER CONNECTING PIPE CLIP	2	
8	K1001.00.030	空滤器接管	AIR CLEANER CONNECTING PIPE	1	
9		塑胶出气管	PLASTIC BREATHER PIPE	1	
10		空滤器出气口泡沫垫片	AIR CLEANER BREATHER FOAM GASKET	1	
11		塑胶螺丝	PLASTIC BOLT	1	
12		滤芯管夹组合	FILTER CLIP COMP	1	
13		滤芯组合	FILTER COMP	1	
14	K1001.00.041	空滤器外壳	AIR CLEANER CRUST	1	
15		空滤器盖	AIR CLEANER CAP	1	
16		空滤器密封圈	AIR CLEANER GASKET	1	
17		空滤器进气调节板	AIR CLEANER INTAKE ADJUSTING PLATE	1	
18		空滤器进气口泡沫垫片	AIR CLEANER INTAKE FOAM GASKET	1	
19		空滤器进气喉管	AIR CLEANER INTAKE THROAT PIPE	1	
20		空滤器进气口盖子	AIR CLEANER INTAKE COVER	1	
21		M5自攻螺丝	SCREW M5	4	
22		空滤器盖锁片	AIR CLEANER COVER LOCK	6	
23		橡胶套夹	RUBBER CLIP	2	
24		橡胶套	RUBBER	1	
25		集尘管夹	INTEGRATE DUST PIPE CLIP	2	
26		集尘管	INTEGRATE DUST PIPE	1	
27		集尘管塞	INTEGRATE DUST PIPE PLUG	1	
28	K100117.0501ZP	空滤器支架	AIR CLEANER BRACKET	1	
29	20 K100117.05Z.01D	空滤器抱箍	AIR CLEANER HOOP	1	

30	LM8*16	M8x16螺杆	BOLT M8*16	4	
31	TDM8	M8弹垫	SPRING WASHER M8	4	
32	PDM8	M8平垫	FLAT WASHER M8	18	
33	LM6*20	M6x20螺杆	BOLT M6*20	2	
34	PDM6	M6平垫	FLAT WASHER M6	2	
35	NZM6	M6六角锁紧螺母	LOCK NUT M6	3	
36	K100117.05Z.01D	空滤器左侧吊板	AIR CLEANER SUSPEND PLATE ,L	1	
37	K100117.05Z.02D	空滤器右侧吊板	AIR CLEANER SUSPEND PLATE ,R	1	
38	LM8*25	M8x25螺杆	BOLT M8*25	2	
39	NZM8	M8六角锁紧螺母	LOCK NUT M8		
40	K100312.0101Z	油箱组件	FUEL TANK	1	
41	K1003.00.003	油箱盖组件	FUEL TANK CAP	1	
42	LM6*25	M6x25螺杆	BOLT M6*25	4	
43	K040112.02S	油箱防震橡胶垫	FUEL TANK SHOCKPROOF RUBBER GASKET	8	
44	260L00081K3( 1 10MM )	油箱出油管	FUEL TANK OUTFLOW HOSE	2	
45	260L00081K3( 2 60MM )	化油器进油管	FUEL TANK INFLOW HOSE	1	
46	260L00014	三通组件	THREE CONNECTING COMP	1	
47	K1001.00.045P	消声器	MUFFLER	1	
48	K1001.00.044P	排气管	EXHAUST PIPE	1	
49	260L00132	消声器拉簧	MUFFLER SPRING	2	
50	K100113.01J	消声器连接管	MUFFLER CONNECTING PIPE	1	
51	LM8*40	M8x40螺杆	BOLT M8*40	2	
52	A040114.00.113	油冷器组件	OIL COOLING COMP	1	
53	K1001.00.034	油冷器左油管	OIL COOLING HOSE ,L	1	
54	K1001.00.035	油冷器右油管	OIL COOLING HOSE ,R	1	
55	K1001.00.013	换挡手把	GEARS SHIFT HANDGRIP	1	
56	K1001.00.032	倒档手把固定座	GEARS SHIFT HANDGRIP HOLDER	1	
	K1001.00.032	倒档手把	REVERSE HANDGRIP	1	
58	XZ4*30	带孔B型4x30轴销	AXLE PIN 4x30	1	
59	KKX1.6*12	开口销 1.6x12	COTTER PIN 1.6*12	1	
60	K100121.02C	开口挡片	COTTER BLOCK PLATE	1	
61	SLM6*16	M6x20十字槽盘头螺钉	CROSS SCREW M6*20	1	

62	K1001.00.066	换挡固定座护套	GEARS SHIFT HOLDER JACKET	1	
63	K1001.00.006	倒档控制线	REVERSE CONTROL CABLE	1	
64	K100121.0101ZP	换挡手把组件	GEARS SHIFT HANDGRIP COMP	1	
65	LM8*30	M8x30螺杆	BOLT M8*30	3	
66	LM8*50	M8x50螺栓半牙	BOLT M8*50	2	
67	K1001.00.053P	换挡固定座	GEARS SHIFT HOLDER	1	
68	K100121.01GD	%C12x1.5-32隔套	SPACER 12x1.5-32	2	
69	LM8*60	M8x60螺栓半牙	BOLT M8*60	1	
70	7.010.003	尼龙衬套	NYLON BUSH	4	
71	K100121.01D	%C12x2-42衬管	BUSH PIPE 12x2-42	1	
72	K100121.02Z	前端拉杆组件	FRONT TIF-ROD	1	
73	K100121.0401ZP	中间摇臂组件	MIDDLE ROCKER	1	
74	FLM8*110	M8x115螺杆	BOLT M8*115	1	
75	8.010.105	%C12x2-86衬管	BUSH PIPE 12x2-86	1	
76	K100121.03Z	后端拉杆组件	REAR TIF-ROD	1	
77	K100121.05ZD	后端摇臂组件	REAR ROCKER	1	
78	XZ8*25	带孔B型8x24轴销	AXLE PIN 8x24	1	
79	KKX3*16	开口销 3x16	COTTER PIN 3x16	1	
80	K100107.0101ZP	发动机前下固定架焊接组件	ENGINE LOWER FASTEN BRACKET ,F	1	
81	FLM10*1.25*55	M10x1.25x55六角法兰面螺栓	FLANGE BOLT M10*1.25*55	5	
82	NZM10*1.25	M10x1.25六角法兰面金属自锁螺母	LOCK NUT M10*1.25	7	
83	FLM10*1.25*85	发动机前上固定架焊接组件	ENGINE UPPER FASTEN BRACKET ,F	1	
84	K100107.0102ZP	发动机前上固定架焊接组件		1	
85	FLM10*1.25*60	M10x1.25x60六角法兰面螺栓	FLANGE BOLT M10*1.25*60	1	

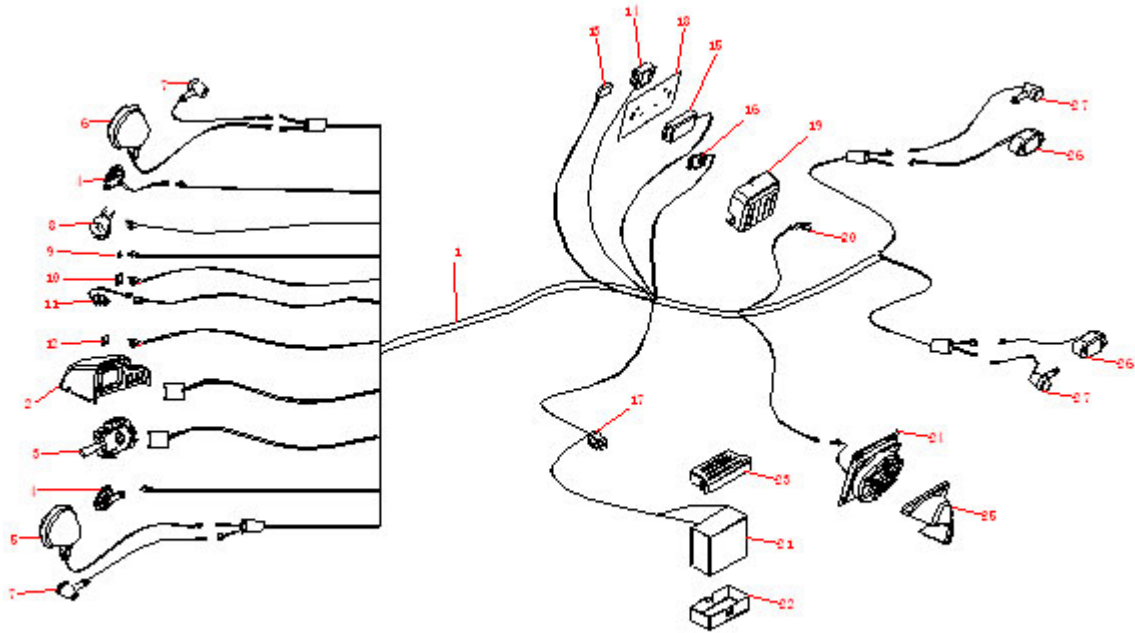
七：减速箱总成  
PART 7. THE TRANSMISSION BOX ASSY



## (七) 减速箱总成 PART 7: THE TRANSMISSION BOX ASSY

REF NO.	PART NO.	CHINESE	ENGLISH	REGD NO.	Unit price
1	K1001.00.099 GB13871-1992	油封FW-%c50-%c70	OIL SEAL 50-%c70	2	
2	GB/T 5783-2000	M8x30螺栓	BOLT M8*30	6	
3	GB/T 5783-2000	M8x40螺栓	BOLT M8*40	2	
4	A0211-10-01-01	箱盖	TRANSMISSION BOX COVER	1	
5	GB/T3452.1-1992	通气接头	BREATHER JOINT	1	
6	GB/T3452.1-1992	密封圈%c170X2.65	GASKET 170X2.65	1	
7	GB/T276-1994	轴承6010	BEARING 6010	2	
8	GB/T894.1-1986	锥齿轮(二)	BEVEL GEAR (2)	1	
9	GB/T894.1-1986	%C38轴用弹性挡圈	CIRCLIP %C38	1	
10	A0211-10-01-04	箱体	TRANSMISSION BOX BODY	1	
11	GB/T 5783-2000	M12x12螺栓	BOLT M12*12	2	
12	GB/T 95-1985	M12平垫	FLAT WASHER M12	8	
13	GB/T93-1987	M12弹垫	SPRING WASHER M12	8	
14	GB/T 5783-2000	M12x25螺栓	BOLT M12*25	8	
15	GB/T 5783-2000	M8x20螺栓	BOLT M8*20	4	
16	GB13871-1992	油封FW-25-47-7	OIL SEAL FW-25-47-7	1	
17	A0211-10-01-06	端盖	SIDE COVER	1	
18	GB/T3452.1-1992	密封圈%c80X2.65	GASKET %c80X2.65	1	
19	GB/T276-1994	轴承6205	BEARING 6205	1	
20	GB/T 893.1-1986	孔用弹性挡圈52	CIRCLIP 52	1	
21	GB/T894.1-1986	%C50轴用弹性挡圈	CIRCLIP %C50	1	
22	GB/T276-1994	轴承6306-Z(单封盖)	BEARING 6306-Z	1	
23	GB/T 5783-2000	锥齿轮(一)	BEVEL GEAR (1)	1	
24	GB/T5801-1994	滚针轴承RNA4901	NEEDLE BEARING RNA4901	1	

八：电器总成  
PART 8 : THE ELECTRIC ELEMENT ASSY



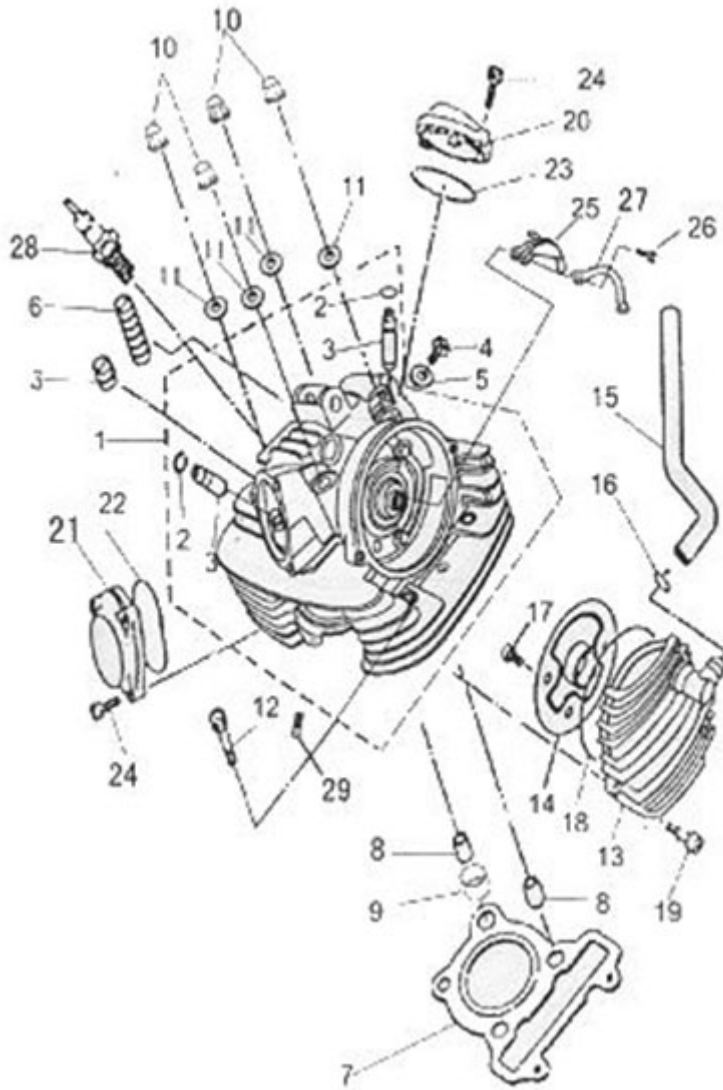
(八) 电器总成 PART 8: THE ELECTRIC ELEMENT ASSY

REF NO.	PART NO.	CHINESE	ENGLISH	REGD NO.	Unit price
1	K1001.00.005	主束线	MAIL WIRE	1	
2	K1001.00.016	组合仪表(罩)	COMBINED SPEEDOMETER COVER	1	
3	K1001.00.015	组合开关	COMBINED SWITCH	1	
4	K1001.00.043	喇叭	HORN	2	
5	260L00139	前左大灯	HEAD LIGHT ,F, L	1	
6	260L00139	前右大灯	HEAD LIGHT ,F, R	1	
7	K1001.00.009Z/009Y	前转向灯	TURNING LIGHT ,F	2	
8		制动开关	BRAKE SWITCH	1	
9	K1001.00.031	喇叭按钮	HORN BUTTON	1	
10	K0405.00.009	手动风扇开关(绿色)	MANUAL FAN SWITCH	1	
11	21500090	点火锁	IGNITION LOCK	1	
12	K0405.00.009	紧急熄火开关(红色)	EMERGENCY STOP SWITCH	1	
13	SSC5-501000-0	风扇控制器	FAN CONTROLLER	1	
14	260L00042	稳压器	RECTIFIER&REGULATOR	1	
15	F3-D10000-0	点火器	IGNITION	1	
16	260L00279	闪光继电器	FLASHER REALY	1	
17	260L00284	起动继电器	START RELAY	1	
18	K1001.00.077H	电器板	ELECTRIC PLATE	1	
19	K1001.00.040	电器罩	ELECTRIC COVER	1	
20		档位开关	GEAR SWITCH	1	
21	A040114.00.002	电瓶	BATTERY	1	
22	K1001.00.012	电瓶盒	BATTERY BOX	1	
23		电瓶盖	BATTERY COVER	1	
24	K1001.00.029	发动机冷却风扇	COOLING FAN	1	
25	K1001.00.042	风扇罩	FAN COVER	1	
26	260L00060	后刹车灯	REAR BRAKE LIGHT	1	



# PART 9. CYLINDER HEAD ASSY

## 一、汽缸盖总成

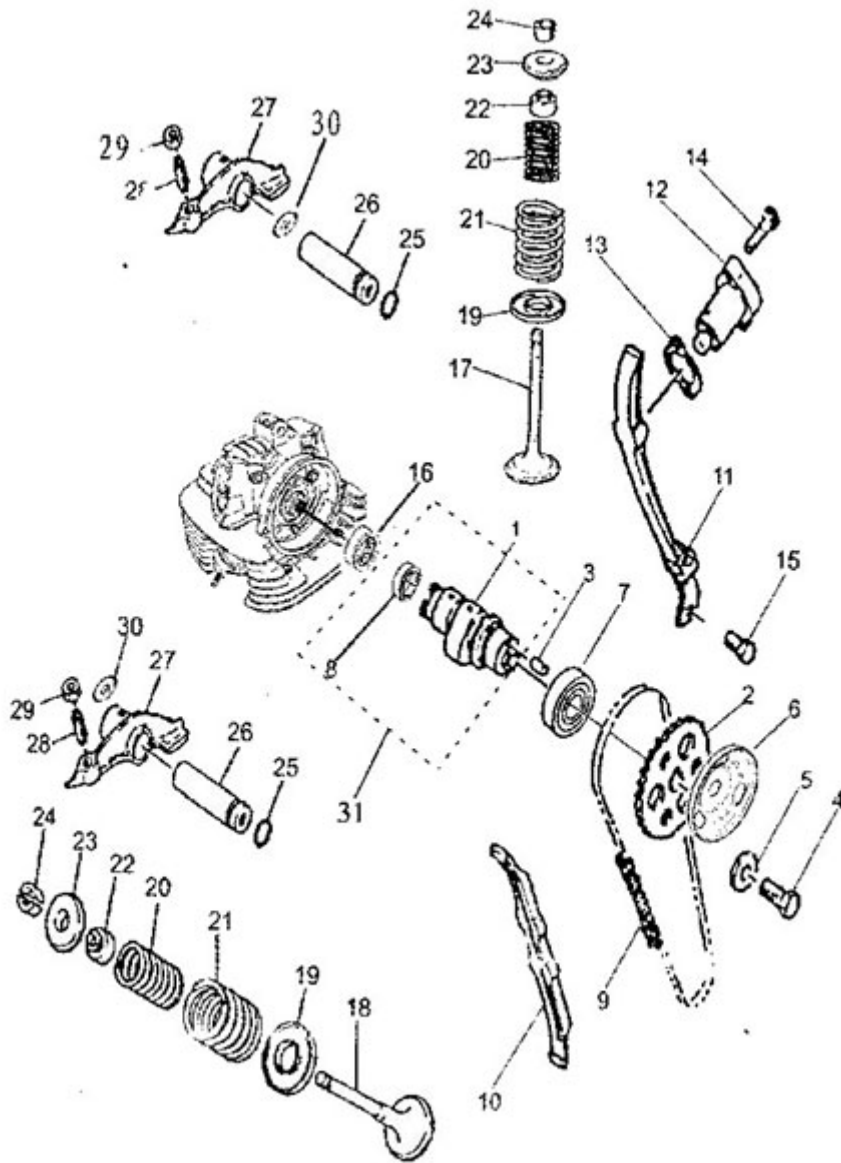


## 一、汽缸盖总成 ( CYLINDER HEAD ASSY )

Ref.no	Part.no	Description		Q'TY	UNIT PRICE	
1	2	F3-111000-0	汽缸盖组合	Cylinder cap assy	1	
2		F3-111701-0	钢丝挡圈	Steel wire circlip	2	
3		F3-111751-0	气门导管	Guide pipe of valve	2	
4		Q/JR YP80-2000	螺栓95026-06010	Bolt 95026-06010	1	
5		FR-100405-0	垫圈	Washer	1	
6		F3-100604-0	减震块	Damper	12	
7		F3-102000-0	汽缸盖垫片组合	Cylinder cap shim unit	1	
8		Q/JR YP96-2000	定位销99510-14016	Alignment pin 99510-14016	2	
9		F3-100603-0	油封14*17.5*8	Oil seal	1	
10		F3-101000-0	盖形螺母	Cap nut	4	
11		F3-100403-0	铜垫圈	Copper washer	4	
12		GB/T 70.1	螺钉M8*50-10.9-Zn5.D	Screw M8*50-10.9-Zn5.D	2	
13		F3-103000-0	链轮室盖组合	Sprocket chamber cover unit	1	
14		FG-102000-0	挡油盘组合	Oil fender cover unit	1	1
15		F3-100605-0	通气管	Air drain	1	1
16		FG-100701-0	卡箍	Hoop	1	
17		Q/JR YP80-2000	螺栓95026-06012	Bolt 95026-06012	2	
18		F3-100602-0	O形圈107.1*2.4	O-ring	1	
19		GB/T70.1	螺钉M6*25-10.9-Zn5.D	Screw M6*25-10.9-Zn5.D	2	
20		F3-100202-0	上气门盖	Upper valve cover	1	
21		FG-100201-0	下气门盖	Lower valve cover	1	
22		FG-100601-0	O形圈	O-ring	1	
23		F3-100601-0	O形圈57.8*2.4	O-ring	1	
24		GB/T 70.1	螺钉M6*16-10.9-Zn5.D	Screw M6*20-10.9-Zn5.D	5	
25		F3-110403-0	压板	Pressure plate	1	
26		GB/T 5783	螺栓M6*12-Zn5.D	Bolt M6*12--Zn5.D	2	
27		F3-110402-0	止动板	Stop plate	1	
28	60	DR8EA	火花塞	Spark plug	1	
29		FB-110851-0	双头螺栓	Double-head bolt	2	

# PART 10. VALVE MECHANISM

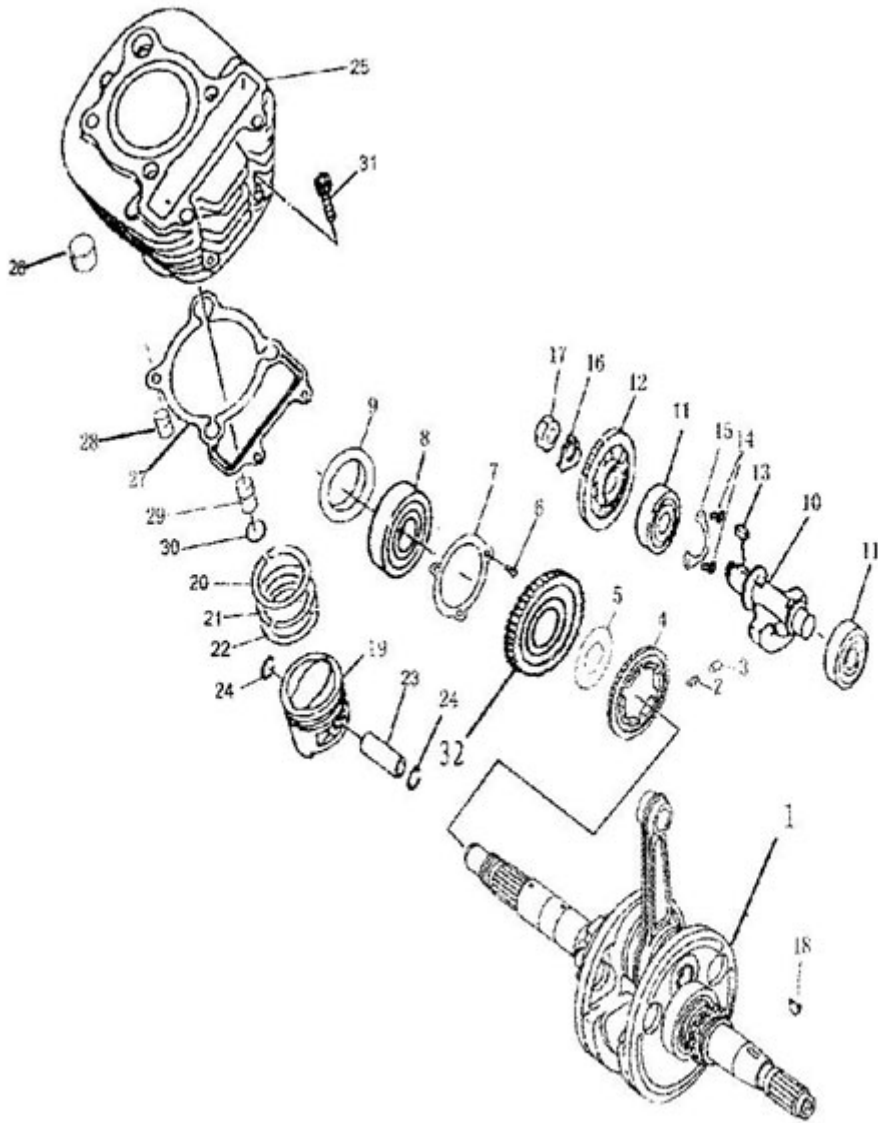
## 二、配气结构



## 二、配气结构( PNEUMATIC MECHANISM )

Ref.no	Part.no	Description		Q'TY	UNIT PRICE
1	F3-114201-0	配气凸轮轴	Pneumatic cam shaft	1	
2	F3-100401-0	正时链条	Timing sprocket	1	
3	FG-100001-0	传动销	Driving pin	1	
4	GB/T5786	螺栓M10*1.25*25-Zn5.D	Bolt M10*1.25*25-Zn5.D	1	
5	FG-100402-0	垫圈	Washer	1	
6	F3-100402-0	甩油盘	Throw oil plate	1	
7	GB/T 276-94	滚动轴承6005-RS/C3	Rolling bearing 6005-RS/C3	1	
8	F3-114001-0	衬套	Bush	1	
9	F3-130000-0	正时链条	Timing chain	1	
10	F3-140000-0	下导向板总成	Lower guide plate assy	1	
11	F3-150000-0	上导向板总成	Upper guide plate assy	1	
12	F3-120000-0	链条张紧器	Chain tensioner	1	
13	F3-100801-0	张紧器垫片	Shim of tensioner	1	
14	Q/JR YP80-2000	螺栓95026-06025	Bolt 95026-06025	2	
15	Q/JR YP80-2000	螺栓95026-06014	Bolt 95026-06014	2	
16	F3-113000-0	滚针轴承	Needle bearing	1	
17	2	F3-110303-0	进气门	1	
18	2	F3-110304-0	排气门	1	
19	F3-110306-0	气门弹簧座	Valve spring seat	2	
20	F3-110701-0	气门内弹簧	Valve innerspring	2	
21	F3-110702-0	气门外弹簧	Valve outer spring	2	
22	F3-112000-0	气门杆油封	Valve stem oil seal	2	
23	F3-110301-0	气门弹簧盖	Valve spring cover	2	
24	F3-110302-0	气门锁夹	Valve lock clip	4	
25	F3-110601-0	O型圈	o-ring	2	
26	F3-110001-0	摇臂轴	Rocker arm shaft	2	
27	F3-110305-0	气门摇臂	Valve rocker arm	2	
28	F3-110851-0	调节螺钉	Adjusting screw	2	
29	F3-110852-0	锁紧螺钉	Locking nut	2	
30	F3-110401-0	弹性垫圈	Elastic washer	2	
31	F3-114000-0	凹轮轴组合	Camshaft unit	1	

**PART 11. CRANK CONNECT ROD MECHANISM**  
曲柄连杆机构

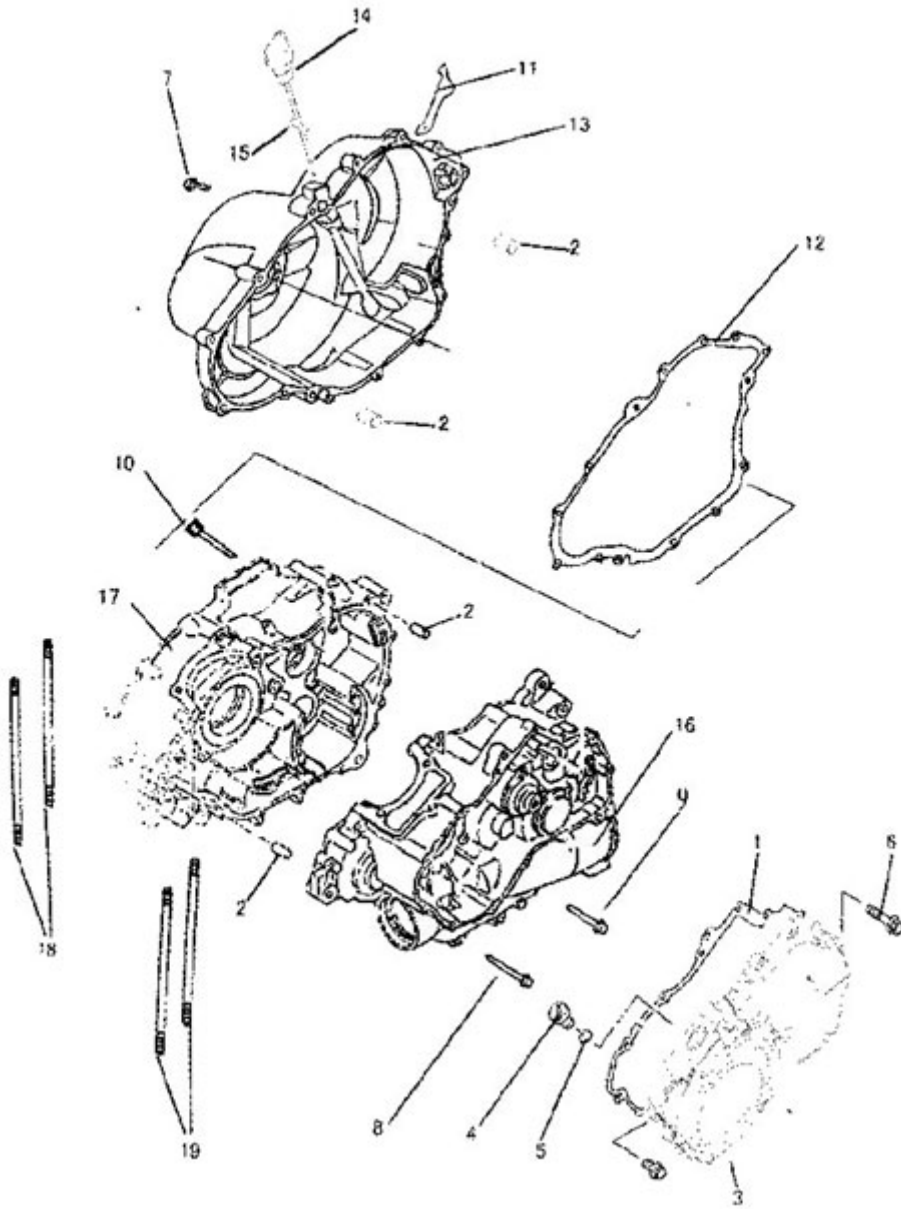


### 三、曲柄连杆机构(CRANK CONNECT ROD MECHANISM)

Ref.no	Part.no	Description		Q'TY	UNIT PRICE
1	F3-210000-0	曲柄连杆总成	Crank connect rod assy	1	
2	F3-200702-0	弹簧	Spring	6	
3	F3-200004-0	弹簧销	Spring pin	3	
4	F3-200302-0	平衡轴驱动齿轮	Balance shaft driving gear	1	
5	F3-200401-0	垫圈	Washer	1	
6	GB/T819.1	螺钉M6*18-Zn5.D	Screw M6*18-Zn6.D	3	
7	F3-200402-0	压板1	Pressure plate 1	1	
8	GB/T276	轴承6203	Bearing 6203	1	
9	F3-202000-0	油封	Oil seal	1	
10	F3-230000-0	平衡轴总成	Balance shaft	1	
11	GB/T276	轴承6205	Bearing 6205	2	
12	F3-200301-0	平衡轴齿轮	Balance shaft gear	1	
13	F3-200003-0	平键	Flat key	1	
14	GB/T819.1	螺钉M6*16-Zn5.D	Screw M6*16-Zn5.D	12	
15	F3-200403-0	压板2	Pressure plate2	1	
16	F3-200404-0	锁紧垫圈	Locking washer	1	
17	F3-200851-0	螺母	Nut	1	
18	F3-200002-0	半圆键	Woodruff key	1	
19	F3-220201-0	活塞	Piston	1	
20	F3-220001-0	活塞环1	Piston ring 1	1	
21	F3-220002-0	活塞环2	Piston ring 2	1	
22	F3-221000-0	油环组合	Oil ring assy	1	
23	F3-200001-0	活塞销	Piston pin	1	
24	F3-200701-0	挡圈	Circlip	2	
25	F3-201000-0	汽缸体组合	Cylinder unit	1	
26	F3-100604-0	减震块	Damper	12	
27	F3-200801-0	汽缸体垫片	Cylinder shim	1	
28	Q/JR YP96-2000	定位销99510-14016	Alignment pin 99510-14016	1	
29	F3-200002-0	定位销	Alignment pin	1	
30	F3-200601-0	定位销 O形圈	Alignment pin o ring	1	
31	GB/T70.1	螺钉M6*30-10.9-Zn.5D	Screw M6*10-9-Zn.5D	2	
32	F3-600301-0	油泵驱动齿轮	Oil pump driving gear	1	

PART 12. CRANKCASE BODY PART

曲轴箱总成

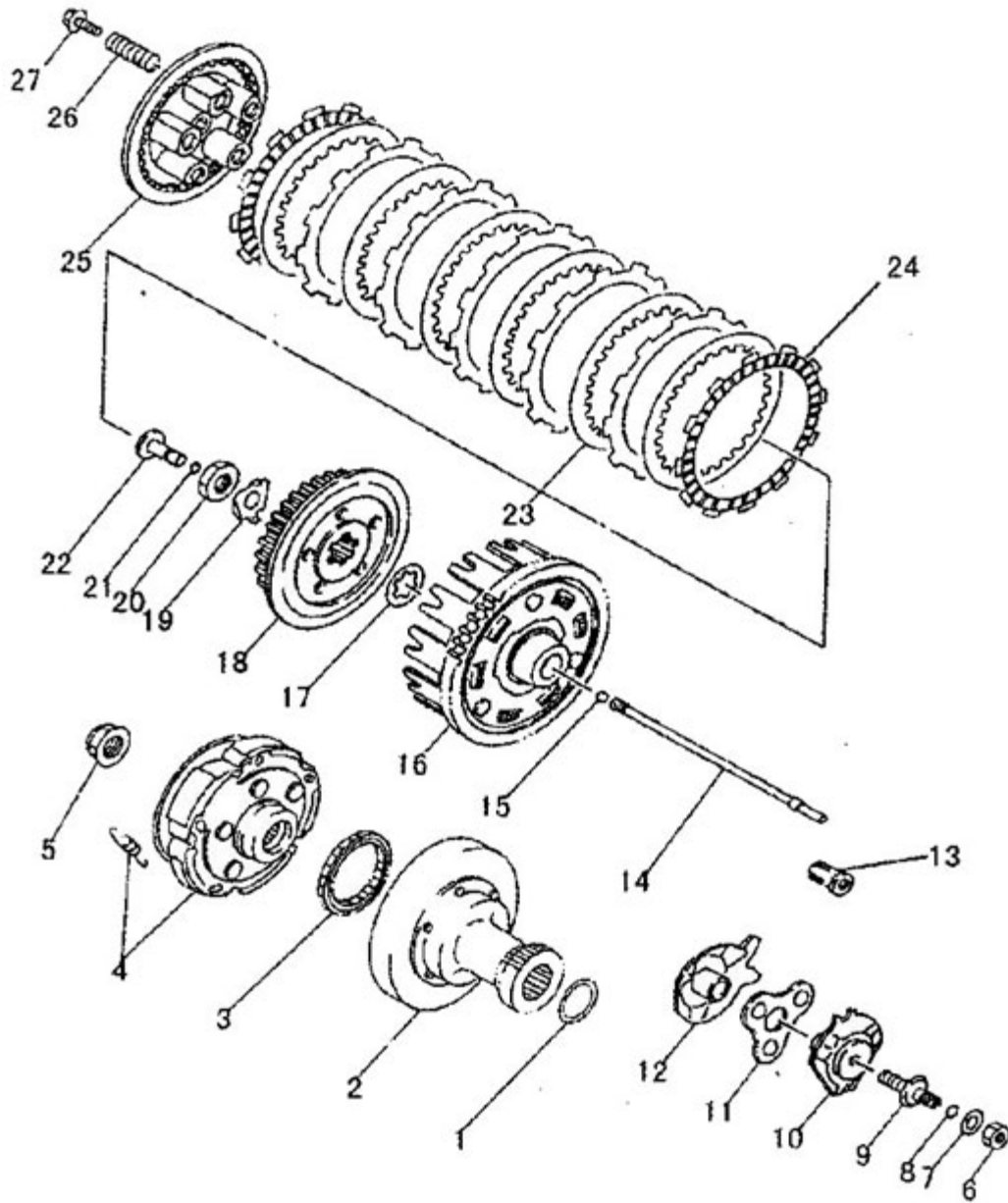




#### 四、曲轴箱总成(CRANKCASE BODY PART)

Ref.no	Part.no	Description	Q'TY	UNIT PRICE
1	F3-300801-0	左曲轴箱密封垫 Left crankcase cover gasket	1	
2	F3-300001-0	定位销10*14 Alignment pin 10*14	6	
3	F3-330000-0	左曲轴箱盖总成 Left crankcase cover assy	1	
4	ZAI-300203-0	观察视孔 Observe hole cover	1	
5	ZAI-300604-0	O形圈 o-ring	1	
6	Q/JR YP80-2000	螺栓 95026-06030 Bolt 65026-06030	27	
7	Q/JR YP80-2000	螺栓95026-06040 Bolt 95026-06040	2	
8	Q/JR YP80-2000	螺栓95026-06060 Bolt 95026-06060	2	
9	Q/JR YP80-2000	螺栓95026-06050 Bolt 95026-06050	9	
10	GB/T 70.1	螺钉M8*10-9-Zn.5D Screw M8*60-10.9-Zn5.D	3	
11	F3-300401-0	倒档拉筋支架 Bracket of reverse gear rope	1	
12	F3-300802-0	右曲轴箱盖密封垫 Right crankcase cover gasket	1	
13	F3-340000-0	右曲轴箱盖总成 Right crankcase cover assy	1	
14	F3-301000-0	油尺 Oil dipstick	1	
15	ZAI-300601-0	O形圈 o-ring	1	
16	F3-310000-0	左曲轴箱总成 Left crankcase assy	1	
17	F3-200000-0	右曲轴箱总成 Right crankcase assy	1	
18	F3-300851-0	双头螺栓 Double -head screw	2	
19	F3-300852-0	双头螺栓 Double head screw	2	
20				

PART 13. CLUTCH  
离合器



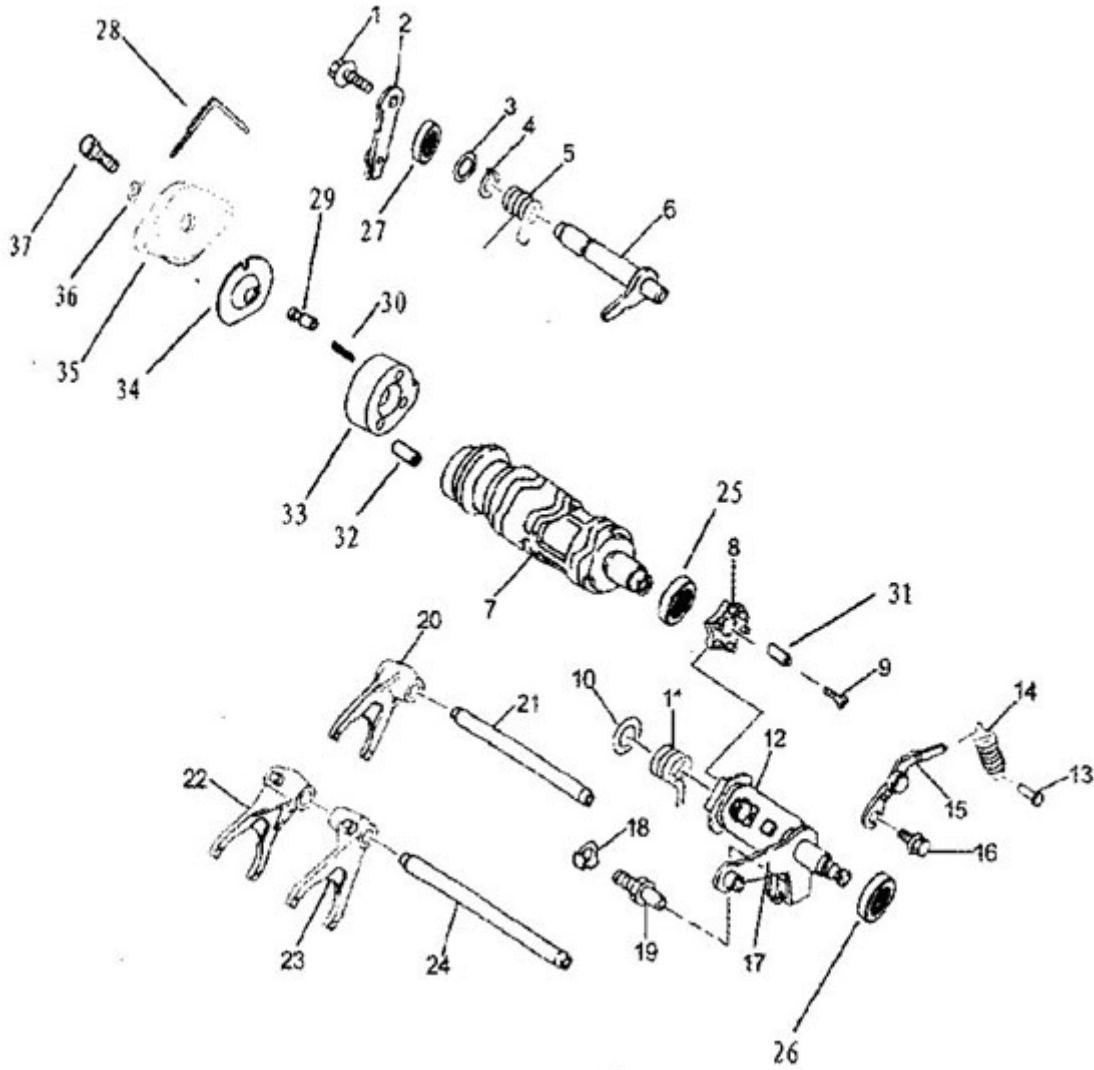
## 五、离合器(CLUTCH)

Ref.no	Part.no	Description	Q'TY	UNIT PRIC E
1	F3-400401-0	主离合器垫圈	1	
2	F3-411000-0	主离合器罩组合	1	
3	F3-413000-0	超越离合器	1	
4	F3-414000-0	主离合器蹄块总成	1	
5	F3-400851-0	螺母	1	
6	GB6170	螺母 M8-Zn5.D		
7	GB/T 97.1	垫圈8-Zn8.D	1	
8	FG-400601-0	O形圈	1	
9	F3-400852-0	离合器调节螺钉	1	
10	F3-404000-0	下凸轮板组合	1	
11	F3-403000-0	刚球架组合	1	
12	F3-402000-0	上凸轮板组合	1	
13	F3-400501-0	辅助衬套	1	
14	F3-401000-0	推杆组合	1	
15	GB/T 308	刚球8.731 G100b	1	
16	F3-421000-0	离合器齿轮组合	1	
17	F3-420402-0	花键垫圈	1	
18	F3-423000-0	离合器轮毂组合	1	
19	F3-400402-0	锁紧垫圈	1	
20	F3-200851-0	螺母	1	
21	F3-400601-0	O形圈	1	
22	F3-400301-0	顶杆	1	
23	F3-420401-0	离合器片	6	
24	F3-422000-0	摩擦片	7	
25	F3-420201-0	压盘	1	
26	F3-420701-0	离合器弹簧	5	
27	F3-424000-0	带垫螺栓	5	
28				

六、操纵、换挡凸轮、拨叉机构( CONTROL SHIFT CAM MECHANISM )

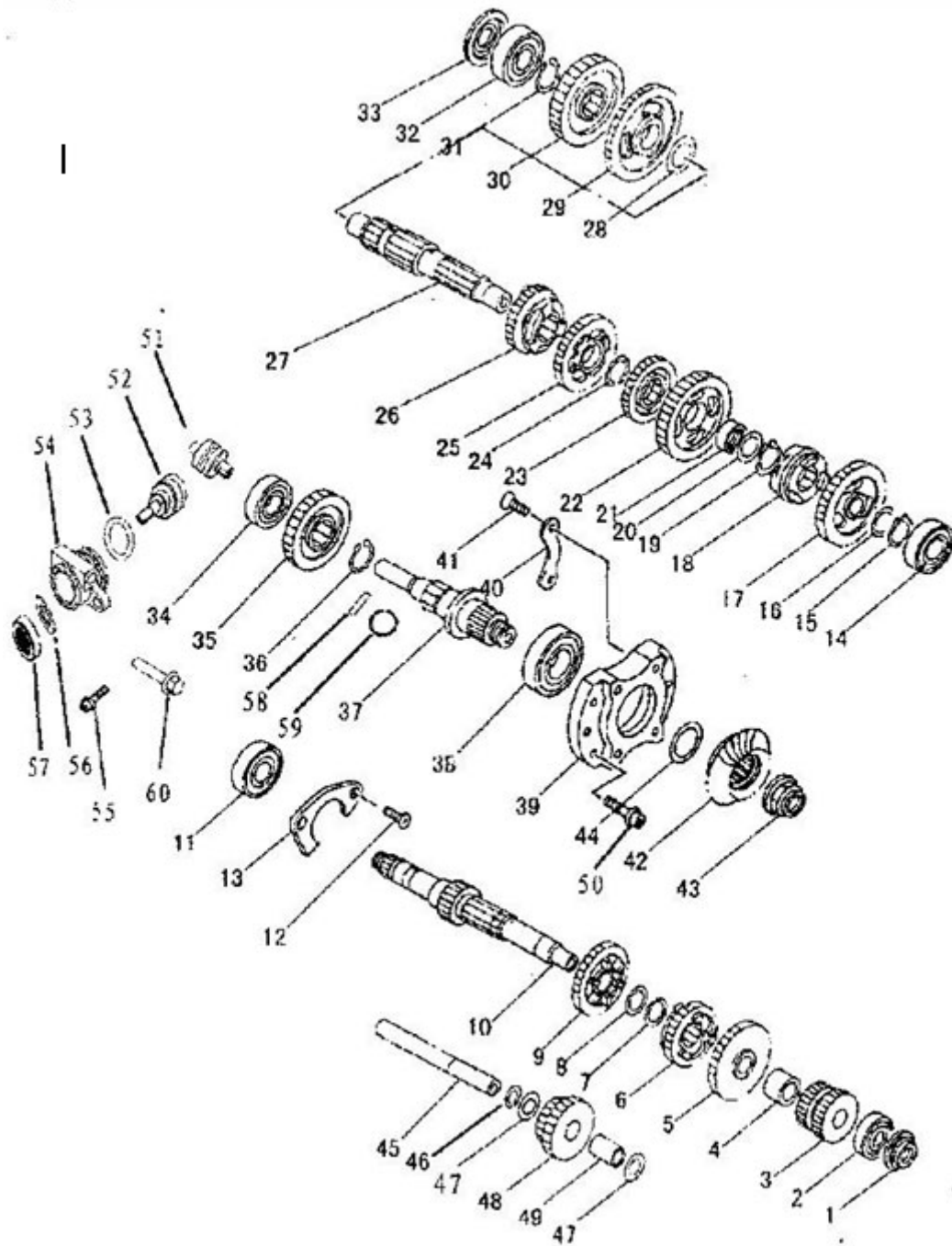
PART 14. CONTROL SHIFT CAM MECHANISM

操纵、换挡凸轮、拨叉机构



Ref.no	Part.no	Description		QTY	UNIT PRICE
1	GB/T5789	螺栓 M6*12-Zn5.D	Bolt M6*12-Zn5.D	1	
2	F3-500402-0	倒档操纵板	Reverse control lever	1	
3	F3-500401-0	垫圈	Washer	1	
4	GB/T894.2	挡圈12	Circlip 12	1	
5	F3-500701-0	扭簧	Spring	1	
6	F3-501000-0	倒档操纵轴组合	Reverse shift bracket	1	
7	F3-540201-0	换档凸轮轴	Shift cam		
8	F3-500751-0	星形轮	Shift cam segment	1	
9	GB/7 819.1	螺栓M6*20-Zn5.D	Bolt M6*20-Zn5.D	1	
10	F3-500404-0	垫圈	Washer	1	
11	F3-550702-0	扭簧	Spring	1	
12	F3-530000-0	换档轴总成	Shift shaft	1	
13	CY80.01-69	弹簧拉销	Spring broaching	1	
14	F3-500703-0	拉簧	Return spring	1	
15	F3-560000-0	限位杠杆总成	Stopper lever	1	
16	F3-500851-0	螺栓	Bolt	1	
17	F3-550000-0	换档杠杆总成	Shift lever assy		
18	F3-500408-0	扭簧销防松垫片	Torque spring pin tension gasket		
19	F3-500852-0	扭簧销	Torque spring pin tension gasket	1	
20	F3-500302-0	拨叉2	Shift fork 2	1	
21	F3-500002-0	短拨叉轴	Short shift fork axle	1	
22	F3-500303-0	拨叉3( R )	Shift fork 3	1	
23	F3-500301-0	拨叉1( L )	Shift fork 1	1	
24	F3-500001-0	长拨叉轴	Long shift fork axle	1	
25	GB/T276	轴承6003	Bearing 6003	1	
26	FG-505000-0	油封	Oil seal	1	
27	ZAI-402000-0	油封	Oil seal	1	
28	F3-500406-0	压线板	Press wire plate	1	
29	F3-540851-0	档位触头	Shaft contact	1	
30	F3-540701-0	弹簧	Spring	1	
31	F3-540001-0	星形轮定位销	Star gear dowel pin	1	
32	F3-540002-0	倒档限位凸轮定位销	Reverse limit cam dowel pin	1	
33	F3-540751-0	倒档限位凸轮	Reverse limit cam	1	
34	F3-540401-0	挡板	Fender	1	
35	F3-D70000-0	挡位显示器	Fender signal	1	
36	GB/T97.1	垫圈6-Zn8.D	Washer 6-Zn8.D	1	
37	GB/T70.1	螺钉M6*16-Zn5.D	Screw M6*16- Zn5.D	1	

**PART 15. GEAR MECHANISM**  
**变速齿轮机构**



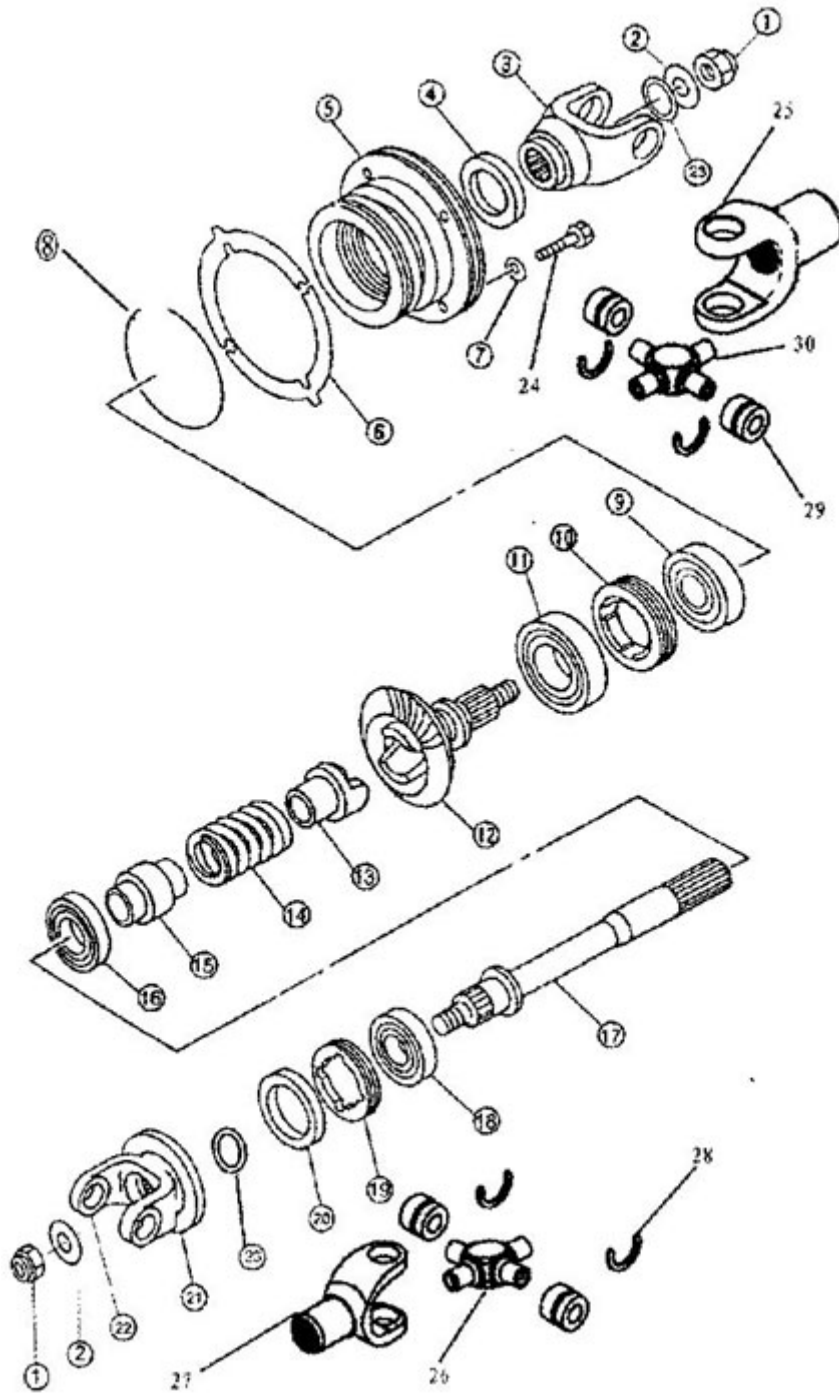
## 七、变速齿轮机构( SHIFT GEAR MECHANISM )

Ref. no	Part.no	Description	Q'TY	UNIT PRICE
1	F3-503000-0	主轴油封	Main axle oil seal	1
2	GB/T 276	轴承 6203	Bearing 6203	1
3	F3-510302-0	二档主动齿轮	Shift 2 driving gear	1
4	F3-510001-0	轴套	Axle cover	1
5	F3-510305-0	五档主动齿轮	Shift 5 driving gear	1
6	F3-510303-0	三档主动齿轮	Shift 3 driving gear	1
7	F3-510401-0	挡圈	Circlip	1
8	F3-510402-0	花键垫圈	Spline washer	1
9	F3-510304-0	四档主动齿轮	Shift 4 driving gear	1
10	F3-510301-0	主轴	Main axle	1
11	F3-505000-0	轴承( 50*22*14 )	Bearing (50*22*14)	1
12	GB/T 819.1	螺钉M6*16-Zn5.D	Screw M6*16-Zn5.D	2
13	F3-500403-0	主轴轴承压板	Main axle bearing pressure plate	1
14	GB/T276	轴承6204	Bearing 6204	1
15	F3-520405-0	挡圈	Circlip	1
16	F3-520406-0	垫圈	Washer	1
17	F3-524000-0	二档从动齿轮组合	Shift 2 driven gear unit	1
18	F3-524000-0	拨叉爪	Shift fork paucirclip	1
19	F3-520307-0	挡圈	Circlip	1
20	F3-520404-0	花键垫圈	Spline washer	1
21	F3-520001-0	花键衬套	Spline bush	1
22	F3-520305-0	倒档齿轮	Reverse gear	1
23	F3-520304-0	五档从动齿轮	Shift 5 driven gear	1
24	F3-520402-0	开口挡圈	Ringent circlip	1
25	F3-520302-0	三档从动齿轮	Shift 3 driven gear	1
26	F3-520303-0	四档从动齿轮	Shift 4 driven	1
27	F3-521000-0	驱动轴组合	Drive axle unit	1
28	F3-520401-0	垫圈	Washer	1
29	F3-522000-0	一档从动齿轮组合	Shift 1 driven gear	1
30	F3-520306-0	驱动齿轮	Drive gear	1
31	GB/T894.2	挡圈26	Circlip26	1
32	GB/T276	轴承6304	Bearing 6304	1
33	F3-504000-0	驱动轴油封	Driving axle oil seal	1
34	GB/T276	轴承6004	Bearing 6004	1
35	F3-570301-0	驱动过轮	Middle drive gear	1
36	GB/T894.2	挡圈26	Circlip 26	1
37	F3-570302-0	过轮轴	Middle drive shaft	1

38		GB/T276	轴承6202C2	Bearing 6202C2	1	
39		F3-500202-0	过轮轴轴承座	Wheel axle bearing base	1	
40		F3-500409-0	压板	Pressure plate	2	
41		GB/T819.1	螺钉M8*25-Zn5.D	Screw M8*25-Zn5.D	4	
42		F3-580307-0	主动锥齿轮	Driving gear	1	
43		F3-580852-0	螺母M22*1	Nut M22*1	1	
44		F3-580410-0	调整垫片	Adjusting gaskets	1	
45		F3-500004-0	倒档轴	Reverse axle	1	
46		GB/T894.2	挡圈15	Circlip 15	1	
47		F3-500405-0	垫圈	Washer	2	
48		F3-500306-0	倒档双连过轮	Reverse wheel gear 2	1	
49		F3-500003-0	衬套	Bush	1	
50		GB/T5789	螺栓M8*30-10.9-Zn5.D	Screw M8*30-10.9-Zn5.D	6	
51		F3-500304-0	转速驱动齿轮	Speed driving gear	1	
52		F3-500305-0	转速从动齿轮	Speed driven gear	1	
53		F3-500601-0	O形圈	o-ring	1	
54		F3-500201-0	转速齿轮座	Speed gear base	1	
55		Q/JR YP80-2000	螺栓95026-06015	Bolt 95026-06015	1	
56		F3-500407-0	垫圈	Washer	1	
57		F3-502000-0	转速齿轮油封	Speed gear oil seal	1	
58		F3-570001-0	传动销	Driving pin	1	
59		F3-570701-0	钢丝挡圈	Steel Circlip	1	
60		GB/T5782	螺栓M6*30	Bolt M6*30	1	



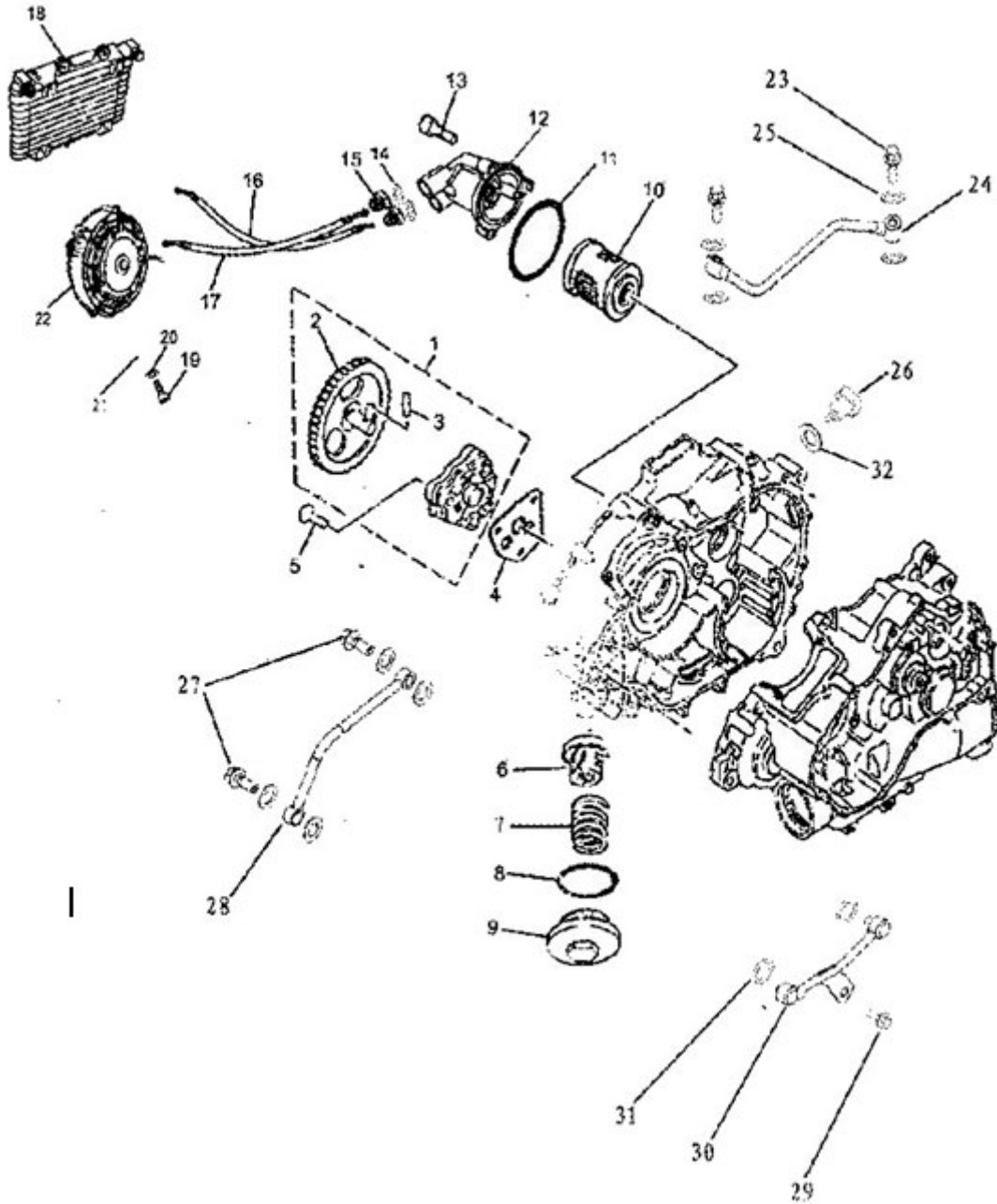
**PART 16. OUTPUT SHAFT**  
输出机构



## 八、输出机构( OUTPUT SHAFT MECHANISM )

Ref. no	Part.no	Description	Q'TY	UNIT PRICE
1	GB/T6186	锁紧螺母M14*1.5	Nut M14*1.5	2
2	F3-580402-0	垫片	Washer	2
3	F3-580303-0	万向节前接头(后驱)	Universal front joint yoke (rear driving)	1
4	F3-580300-0	油封	Oil seal	1
5	F3-581201-0	后盖	Bearing housing	1
6	F3-580405-0	调整垫片	Adjusting gasket	1
7	GB97.1-85	垫圈8-Zn8.D	Washer	4
8	F3-581601-0	O形圈	o-ring	1
9	GB/T 276	轴承6305	Bearing 6305	1
10	F3-581851-0	异形螺套	Abnormal screw sleeve	1
11	GB/T276	轴承6207C3	Bearing 6207C3	1
12	F3-581301-0	从动锥齿轮轴	Middle driven pinion gear	1
13	F3-580301-0	连接爪	Connection paw	1
14	F3-580701-0	弹簧	Spring	1
15	F3-580001-0	衬套	Bushing	1
16	GB/T 276	轴承6006C3	Bearing 6006C3	1
17	F3-580302-0	传动轴(前驱)	Middle driven shaft	1
18	GB/T 276	轴承6205	Bearing 6205	1
19	F3-580851-0	异形螺套	Abnormal screw sleeve (front driving)	1
20	F3-582000-0	油封	Oil seal	1
21	F3-580401-0	防尘盖	Dust proof cover	1
22	F3-580305-0	万向节后接头(前驱)	Universal front joint yoke (front driving)	1
23	F3-580601-0	O形圈	O-ring	2
24	GB/T5782	螺栓M8*30-10.9-Zn5.D	Bolt M8*30-10.9-Zn5.D	4
25	F3-580304-0	万向节后接头(后驱)	Universal front joint yoke (real driving)	1
26	F3-584000-0	十字轴组合	Cross axle unit	1
27	F3-586000-0	万向节后接头组合(前驱)	Universal real joint yoke (front driving)	1
28	FG-580402-0	卡圈	Clip	8
29	FG-586000-0	滚针轴承	Roll needle bearing	8
30	FG-580305-0	传动叉	Transmission fork	1

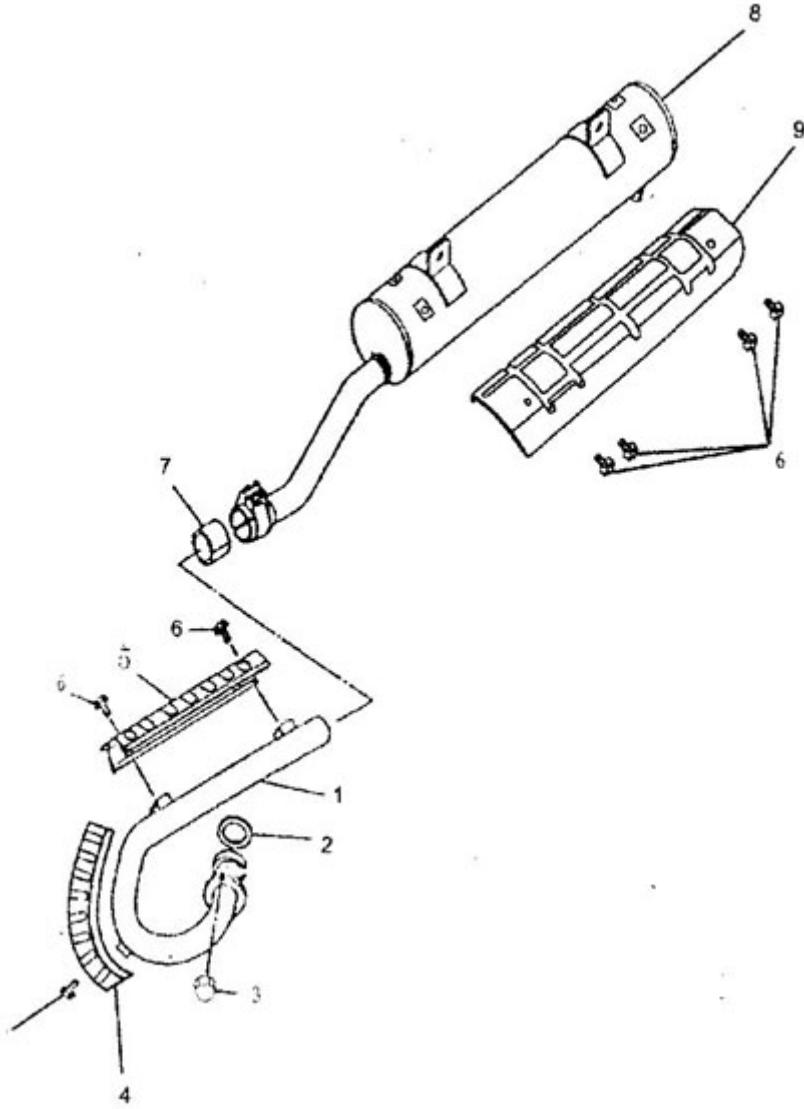
**PART 17. LUBRICATION COOLING MECHANISEM**  
**润滑冷却机构**



## 九、润滑冷却机构( LUBRICATION COOLING MECHANISEM )

Ref. no	Part.no	Description		Q'TY	UNIT PRICE
1	F3-610000-0	机油泵	Engine oil pump		
2	F3-611000-0	油泵齿轮组合	Oil pump gear unit		
3	F3-610001-0	传动销	Transmission pin		
4	FG-600801-0	油泵垫片	Oil pump pad		
5	GB/T819.1	螺钉6*30-Zn5.D	Screw M6*30-Zn5.D		
6	FG-620000-0	机油粗滤器	Engine oil coarse strainer		
7	FG-600701-0	压簧	Compressing spring		
8	FG-600601-0	O形圈	o-ring		
9	F3-610000-0	放油螺塞	Oil drain plug screw		
10	F3-630000-0	机油精滤器	Engine oil fine strainer		
11	F3-600601-0	O形圈	o-ring		
12	F3-670000-0	精滤器盖总成	Engine oil fine strainer		
13	GB/T70.3	螺钉M6*30-10.9-Zn5.D	Screw M6*30-10.9-Zn5.D		
14	F3-600401-0	铜垫圈	Gasket		
15	F3-600853-0	接头	Contact		
16	F3-640000-0	油管组合4	Oil delivery pipe 4		
17	F3-650000-0	油管组合5	Oil delivery pipe 5		
18	F3-660000-0	冷油器总成	Oil cooler assy		
19	GB/T5786	螺栓M6*12-Zn5.D	Nut M6*12-Zn5.D		
20	GB/T97.1	垫圈6-Zn5.D	Washer 6-Zn8.D		
21	GB/T6187	螺母M6-9-Zn5.D	Nut M6-9-Zn5.D		
22	F3-D90000-0	冷却风扇电机	Cooler fan motor		
23	F3-600851-0	螺钉M8*20	Bolt M8*20		
24	F3-601000-0	油管组合1	Oil pipe unit 1		
25	F3-600402-0	铜垫圈	Gasket		
26	F3-D80000-0	油温传感器	Oil temperature sensor		
27	F3-600852-0	螺钉M8*22	Bolt		
28	F3-602000-0	油管组合2	Oil pipe unit 2		
29	Q/TR YP802000	螺栓95026-06012	Bolt 95026-06012		
30	F3-603000-0	油管组合3	Oil pipe unit 3		
31	F3-6006020-0	O形圈	o-ring		
32	FG-500405-0	垫圈	Washer		

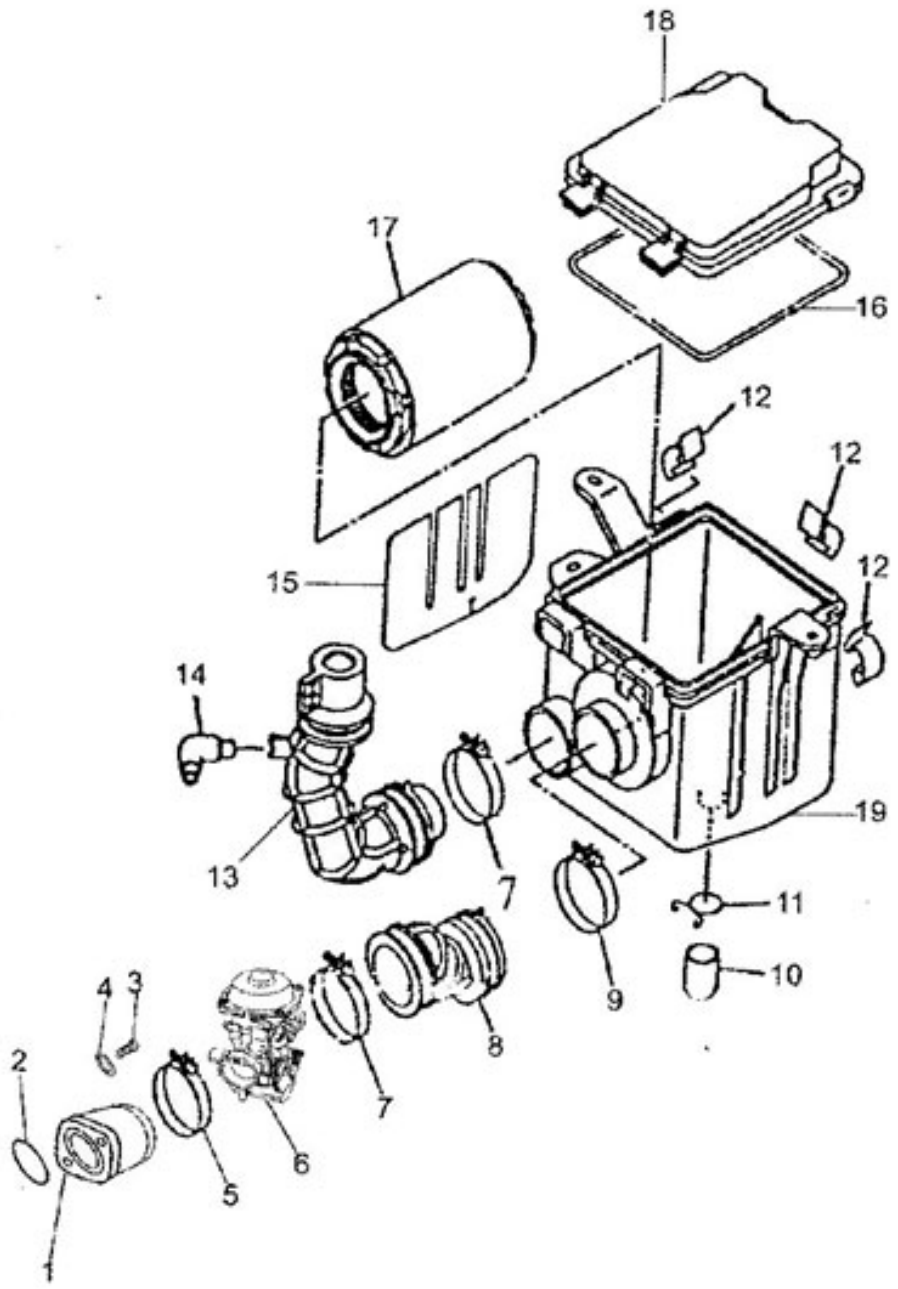
**PART 18. EXHAUST SYSTEM**  
排气系统



## 十、排气系统( EXHAUST SYSTEM )

Ref.no	Part.no	Description		Q'TY	UNIT PRICE
1	F3-740000-0	排气管总成	Exhaust pipe unit	1	
2	F3-702000-0	排气管垫圈	Exhaust pipe washer	1	
3	F3-700851-0	螺母	Nut	2	
4	F3-730401-0	护板1	Defend plate 1	1	
5	F3-730402-0	护板2	Defend plate 2	1	
6	GB/T 5789	螺栓M6*12	Bolt M6*12	7	
7	F3-750801-0	排气管密封圈	Seal ring of the exhaust pipe	1	
8	F3-750000-0	消声器总成	Silencer assy	1	
9	F3-730403-0	护板3	Defend plate	1	
10					

PART 19. INTAKE SYSTEM  
进气系统

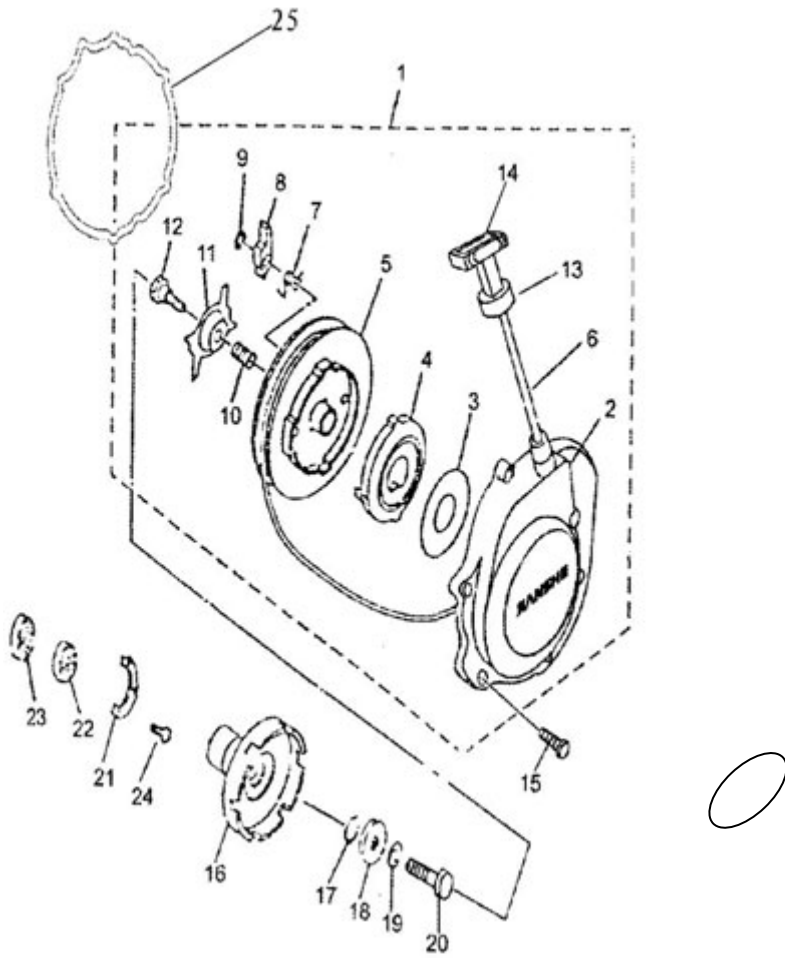


## 十一、进气系统( INTAKE SYSTEM )

Ref.no	Part.no	Description	Q'TY	UNIT PRICE
1	F3-701000-0	化油器座组合	1	
2	F3-700601-0	O形圈	1	
3	GB/T 70.1	螺钉M8*25	2	
4	F3-700401-0	垫圈	2	
5	F3-703000-0	管夹组合	1	
6	F3-720000-0	化油器	1	
7	F3-712000-0	进气管管夹组合	2	
8	F3-701000-0	化油器连接管	1	
9	F3-701000-0	管夹组合	1	
10	FG-710504-0	集尘杯	1	
11	FG-710701-0	钢丝夹	1	
12	FG-710401-0	空滤器盖锁片	3	
13	FG-710501-0	通气管弯头	1	
14	FG-710801-0	隔热垫	2	
15	FG-710603-0	密封圈	1	
16	FG-711000-0	滤芯组合	1	
17	FG-710502-0	空滤器垫	1	
18	FG-710503-0	空滤器体	1	



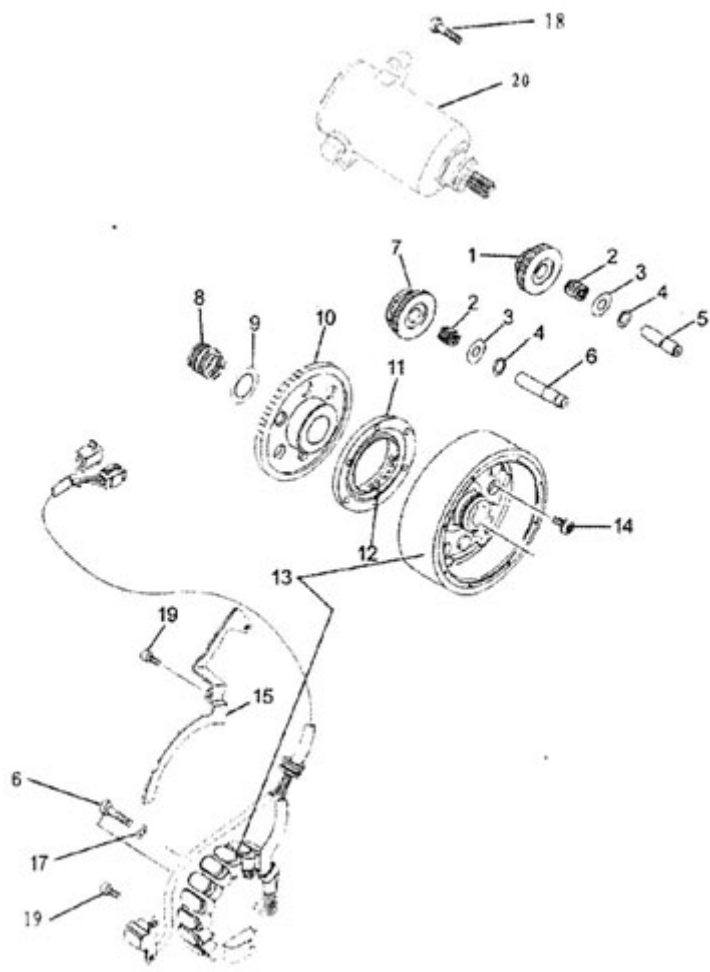
**PART 20. PULL STARTER**  
手起动装置



## 十二、手起动装置( PULL STARTER )

Ref. no	Part.no	Description	Q'TY	UNIT PRICE
1	F3-870000-0	手起动机构组合	Hand starting device	1
2	F3-872000-0	左侧盖组合	Left side cover unit	1
3	FG-870801-0	垫片	Shim	1
4	FG-873000-0	卷簧底板组合	Bottom board unit of winding spring	1
5	F3-871000-0	驱动盘组合	Drive plate unit	1
6	F3-870802-0	拉线	Tension line	2
7	FG-870702-0	扭簧	Torsion spring	2
8	FG-870851-0	驱动爪	Drive paw	2
9	GB/T896	挡圈6	Circlip 6	1
10	FG-870701-0	压簧	Compressing spring	1
11	F3-8704010-0	导向板	Guide board	1
12	FG-870001-0	螺钉销	Screw pin	1
13	FG-870601-0	启动手柄	Start lever	1
14	FG-870402-0	起动手柄盖	Start lever cover	1
15	Q/JR YP80-93	螺栓95026-06020	Bolt 95026-06020	6
16	F3-801000-0	起动棘轮组合	Starting ratchet	1
17	F3-800601-0	O形圈	o-ring	1
18	FG-870000-0	垫圈	Washer	1
19	GB/T93	垫圈	Washer	1
20	GB/T5785	螺栓M10*1.25*40	Bolt M10*1.25*40	1
21	F3-800404-0	压板2	Pressing plate	1
22	GB/T93	油封	Oil seal	1
23	F3-584000-0	轴承	Bearing	1
24	GB/T819.1	螺钉M5*16-Zn5.D	Screw M5816-Zn5.D	3
25	F3-800801-0	垫片	Washer	1
26				

**PART 21. STARTER MOTOR MECHANISM**  
电起动装置



### 十三、电起动装置( STARTER MOTOR MECHANISM )

Ref.no	Part.no	Description	Q'T Y	UNIT PRIC E
1	F3-800301-0	双连齿轮1 Start idle gear 1	1	
2	F3-803000-0	滚针轴承 Bearing	2	
3	F3-800401-0	垫圈 Washer	2	
4	GB/T894.1	挡圈12 Circlip 12	2	
5	F3-800001-0	过轮轴1 Go gear axle 1	1	
6	F3-800002-0	过轮轴2 Go gear axle 2	1	
7	F3-800302-0	双连过轮2 Starter idle gear 2	1	
8	F3-804000-0	滚针轴承 Bearing	1	
9	F3-800402-0	垫圈 Washer	1	
10	F3-860000-0	电起动大齿轮组 合 Gear unit of electric starter	1	
11	F3-800003-0	超越离合器盘 Starter clutch plate	1	
12	F3-830000-0	超越离合器 Starter clutch	1	
13	F3-D50000-0	磁电机 Magneto	1	
14	Q/JR YP81- 2000	螺钉M8*15-10- Zn5.D Screw M8*15-10-Zn5.D	6	
15	F3-800403-0	压板1 Lead holder	1	
16	Q/JR YP81- 2000	螺栓98512-06030 Bolt 98512-06030	3	
17	GB/T93	垫圈6-Zn8.D Washer 6-Zn8.D	3	
18	Q/JR YP80- 2000	螺栓95026-06030 Bolt 95026-06030	2	
19	GB/T70.1	螺钉M5*12-10.9- Zn5.D Screw M5*12-10.9-Zn5.D	4	
20	F3-D60000-0	起动电机 Starting motor	1	
21				

# NOTES



XATVUSA Inc.  
7940 Silverton Ave. Suite 107  
San Diego, CA 92126

Main (858) 689 8889  
Fax (858) 689 6588  
Email [usa.xatv@gmail.com](mailto:usa.xatv@gmail.com)